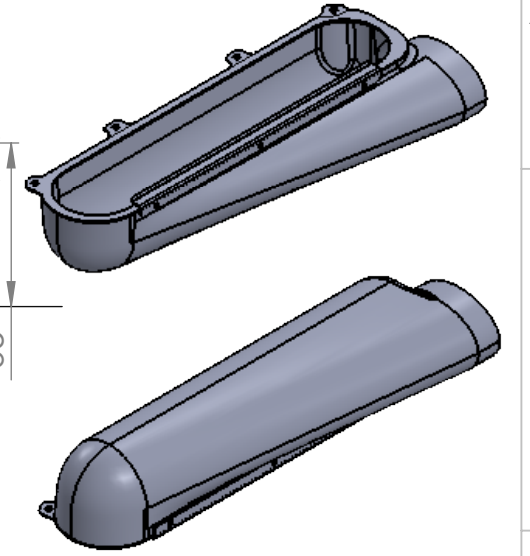
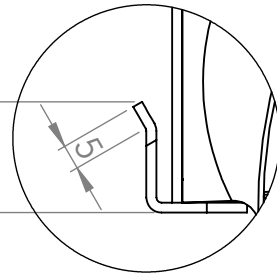


- VOLUME:10.5L
- R01SE0560 - AIRBOX 6 CYL RH
- R01SE0561 AIRBOX 6 CYL LH
- TRIM THE INLET HOLE OF AIRBOX AT 40MM OF THE EDGE OF AIRBOX
- DRILL THE FOUR RETAINING CLIP HOLES USING 3 - 10MM DIAMETER STEPPED END MILL
- PUT THE TRIM JIG (R01SE0562-TJ-1) ON THE FACE PLATE AND LOCATE USING THE FOUR PREVIOUS HOLES.
- USE SCRIBE TO TRACE THE END OF PART. REMOVE THE TRIM JIG.
- TRIM THE FACE PLATE (R01SE0562)




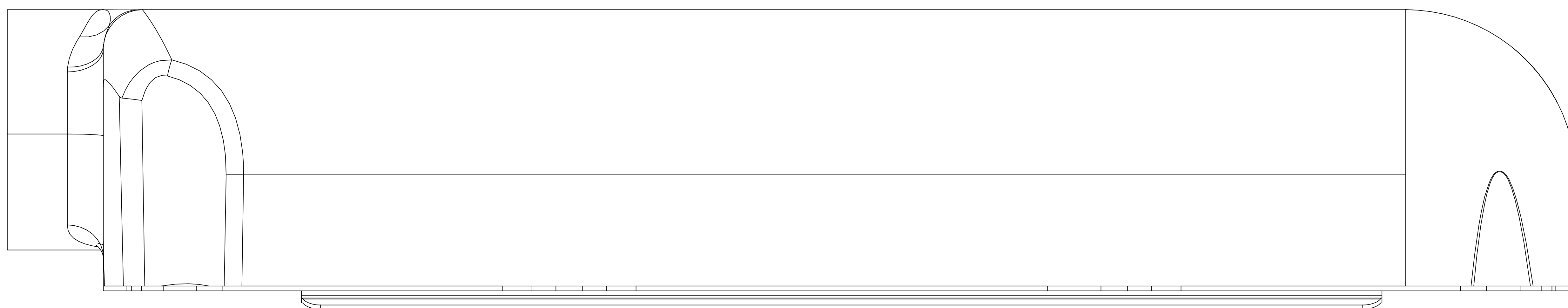
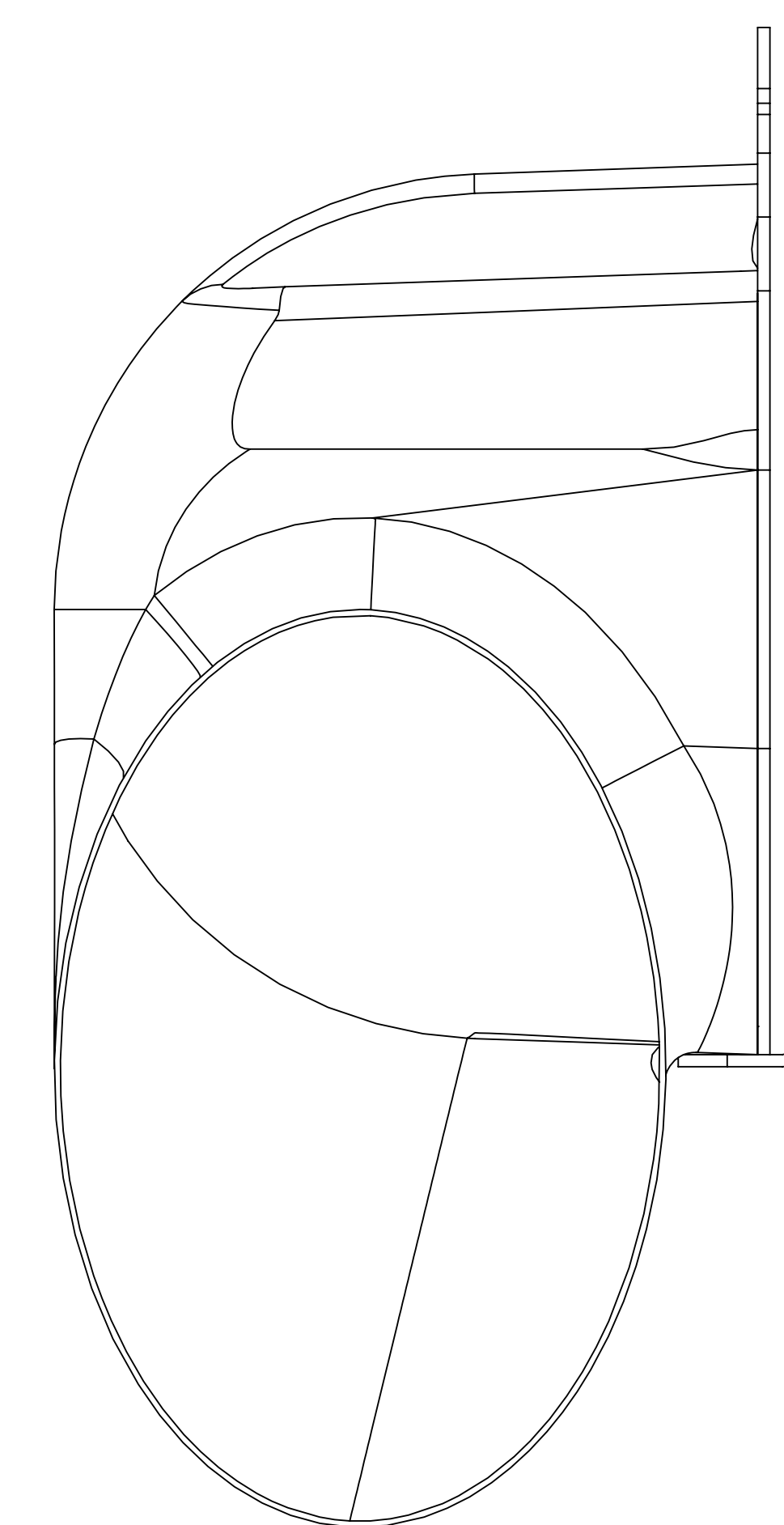
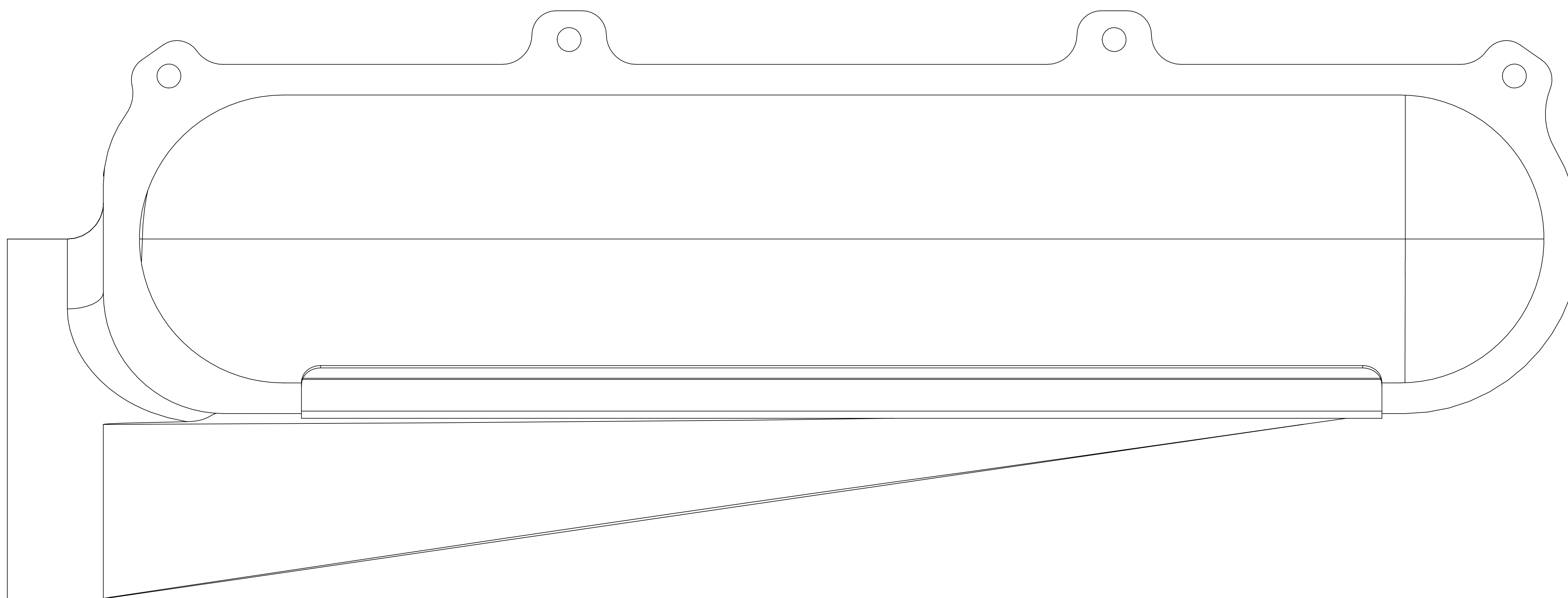
Technical drawing of a mechanical part, likely a bracket or support. The drawing includes the following dimensions and features:

- Overall height: 245
- Height of the upper section: 170
- Radius of the large curved section: 150
- Width of the base: 100
- A detail view labeled 'A' is shown, which is a magnified view of the corner where the base meets the vertical support.



DETAIL A
SCALE 2 : 3

ISS: DESCRIPTION:		INITIALS:	E.C.N. NO:	DATE:	ALL DIMENSIONS IN MILLIMETERS		REMOVE ALL BURRS AND SHARP EDGES UNLESS OTHERWISE STATED		<div></div> <div>Reverie Ltd Unit 2 Chandlers Row Colchester Essex CO1 2HG 01206 866663 www.reverie.ltd.uk</div>		DRAWN: SV	APP:	PART NO(S): R01SE0560, R01SE0561	
1	Original issue	SV		12/11/2012	TOLERANCES (AT 20°C) UNLESS OTHERWISE STATED		HOLES TO BS4500 1985.				DATE: 12/11/2012	TITLE: ZOLDER MACAU 6 CYL JC100 LH/RH		
					NOMINAL LINEAR DIMENSIONS		SURFACE FINISHES:				FINISH: SEE DRAWING	CUSTOMER: N/A		
					OVER-INCL	< 0.00	0.00	MILLING N8 TURNING N7 GRINDING N6			SCALE: DO NOT SCALE	MATERIAL: C/FIBRE		
					0-200	+/- 0.50	+/- 0.15				WEIGHT: -	INSPECTION GRADE: A-1		
					250-1000	+/- 1.00	+/- 0.20		THIS A DRAWING IS A PRIVATE AND CONFIDENTIAL COMMUNICATION		PART QUALITY: B			
					1000 PLUS	+/- 2.00	+/- 0.30	ANG DIMS +/- 0.5			DRG. NO.: SEE PART NO.S			



1:1 100% SCALE