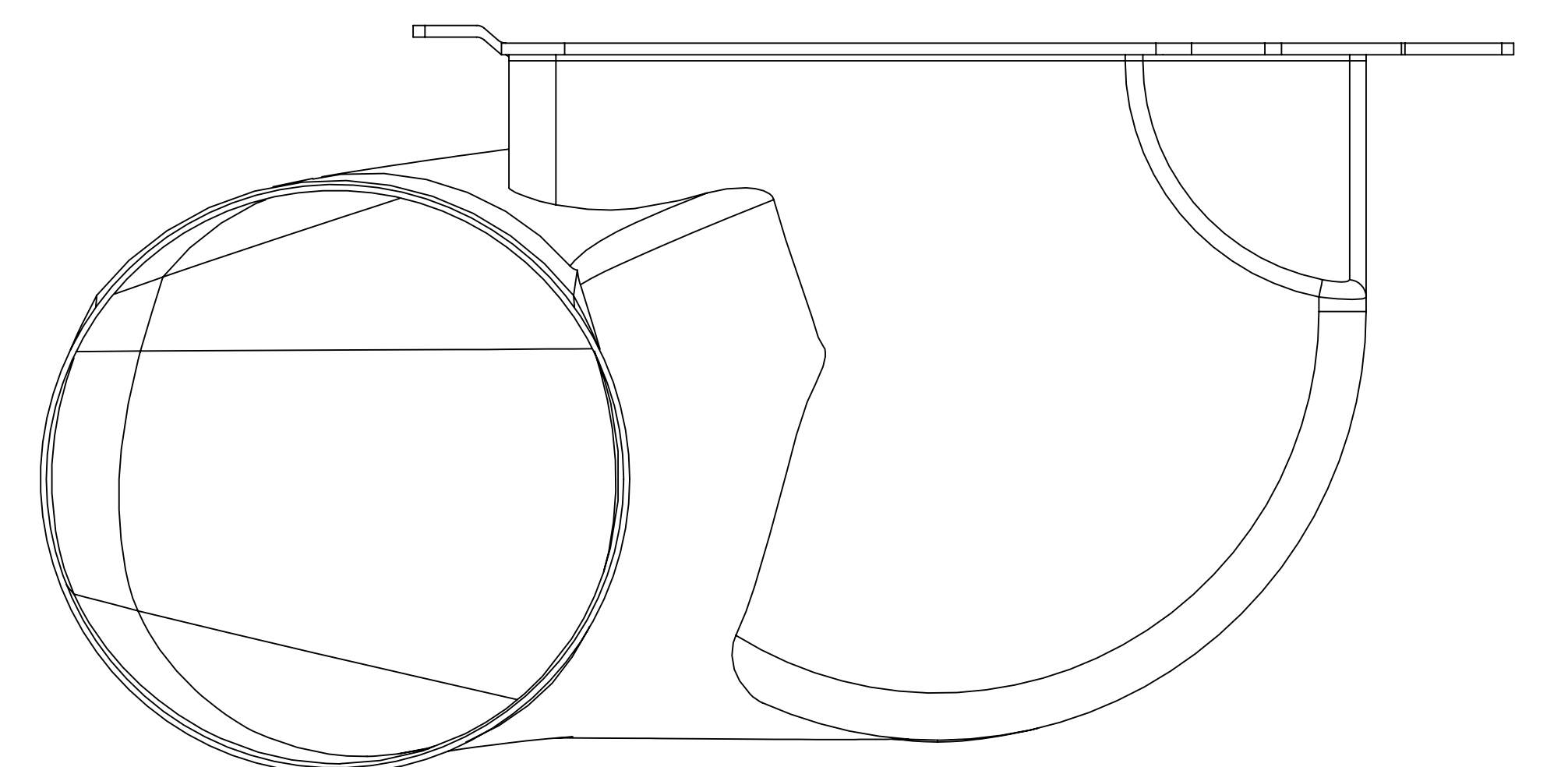
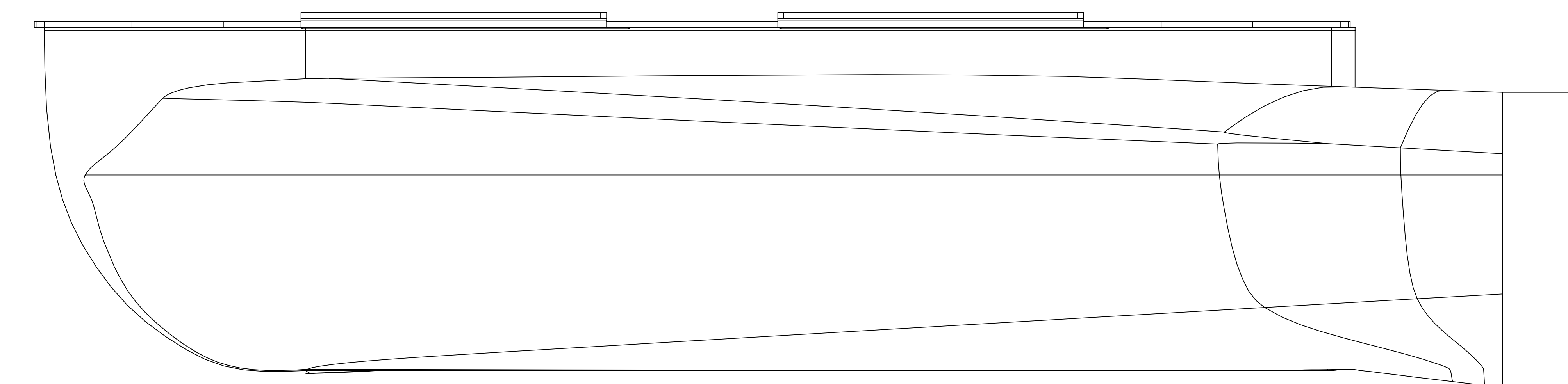
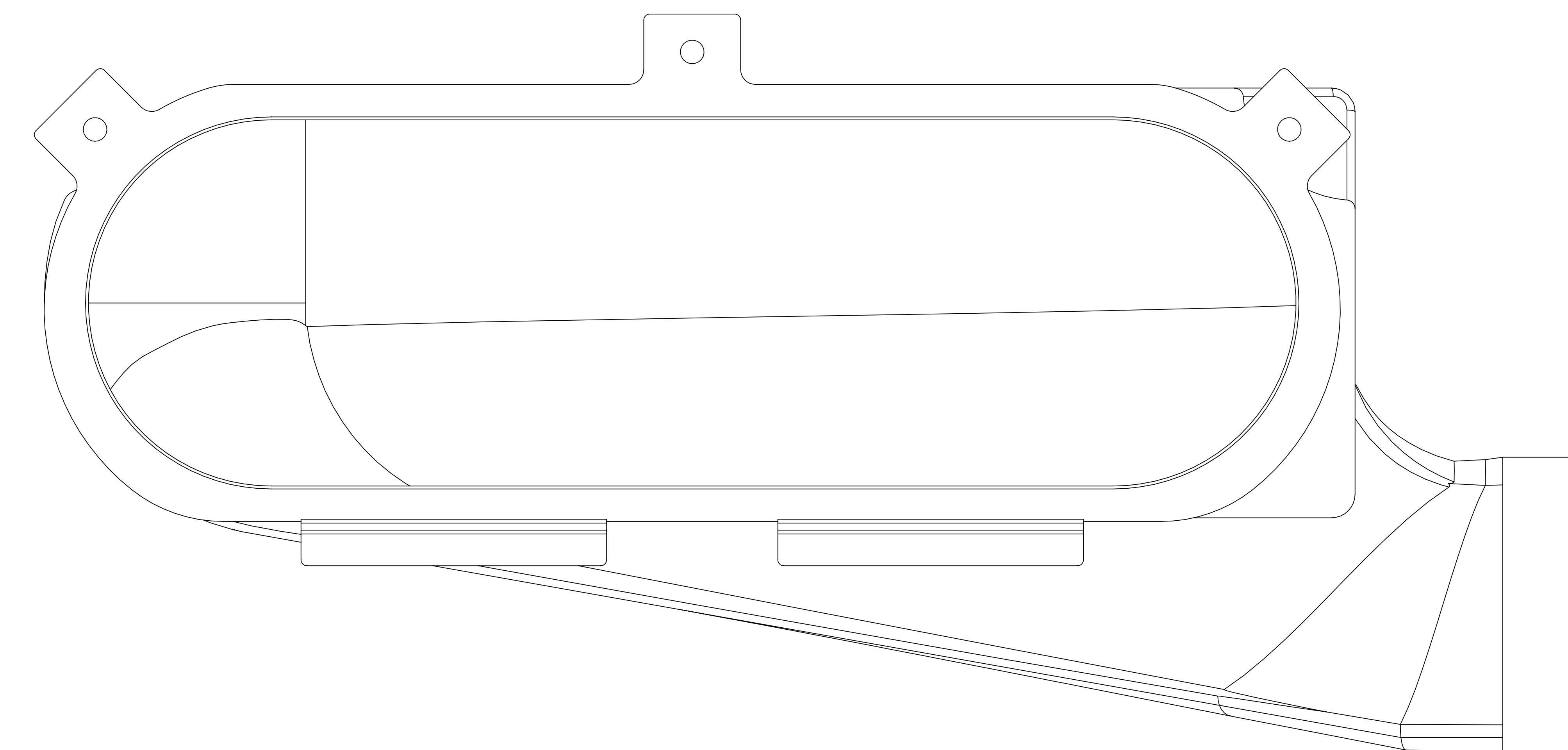
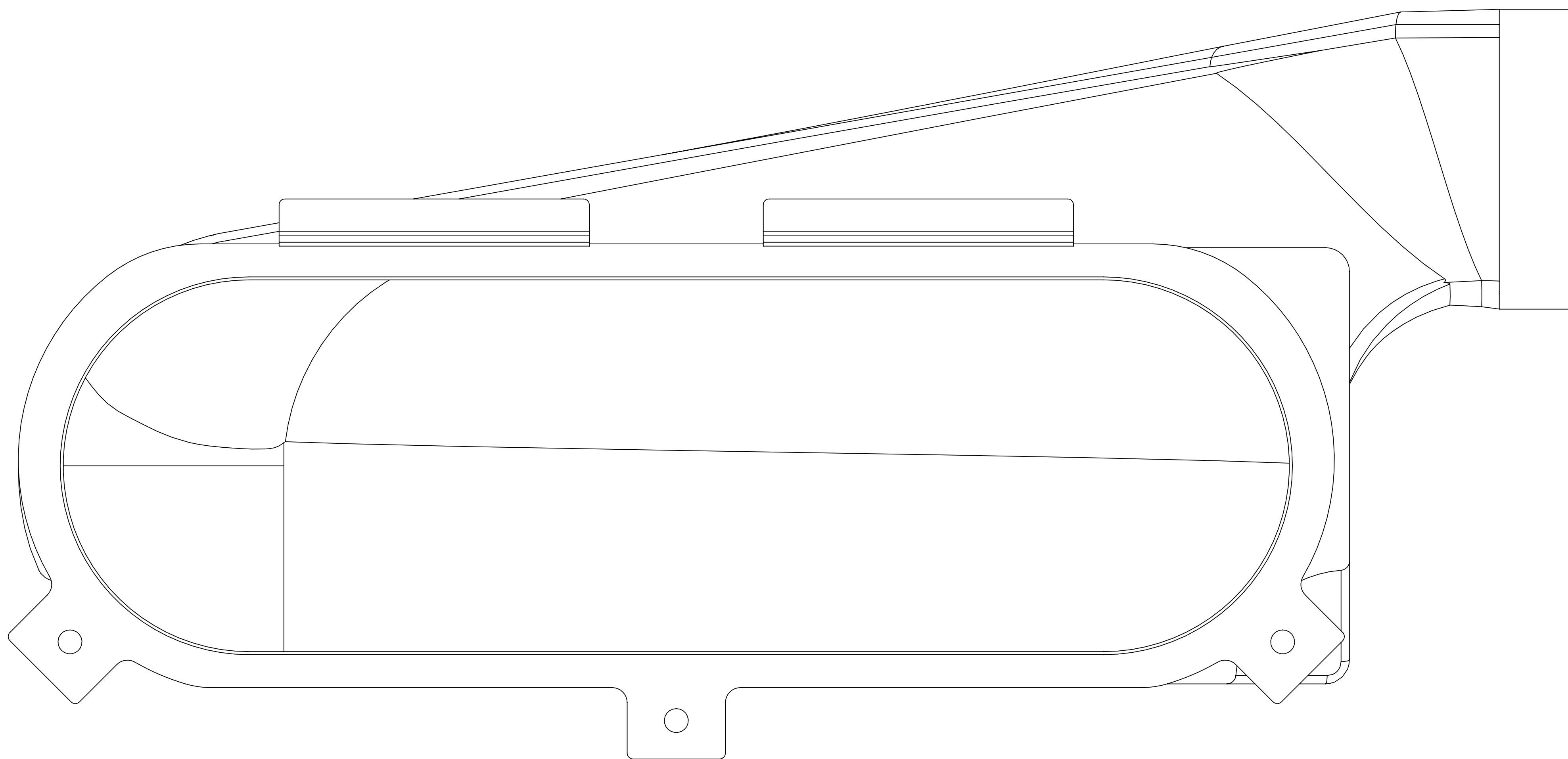
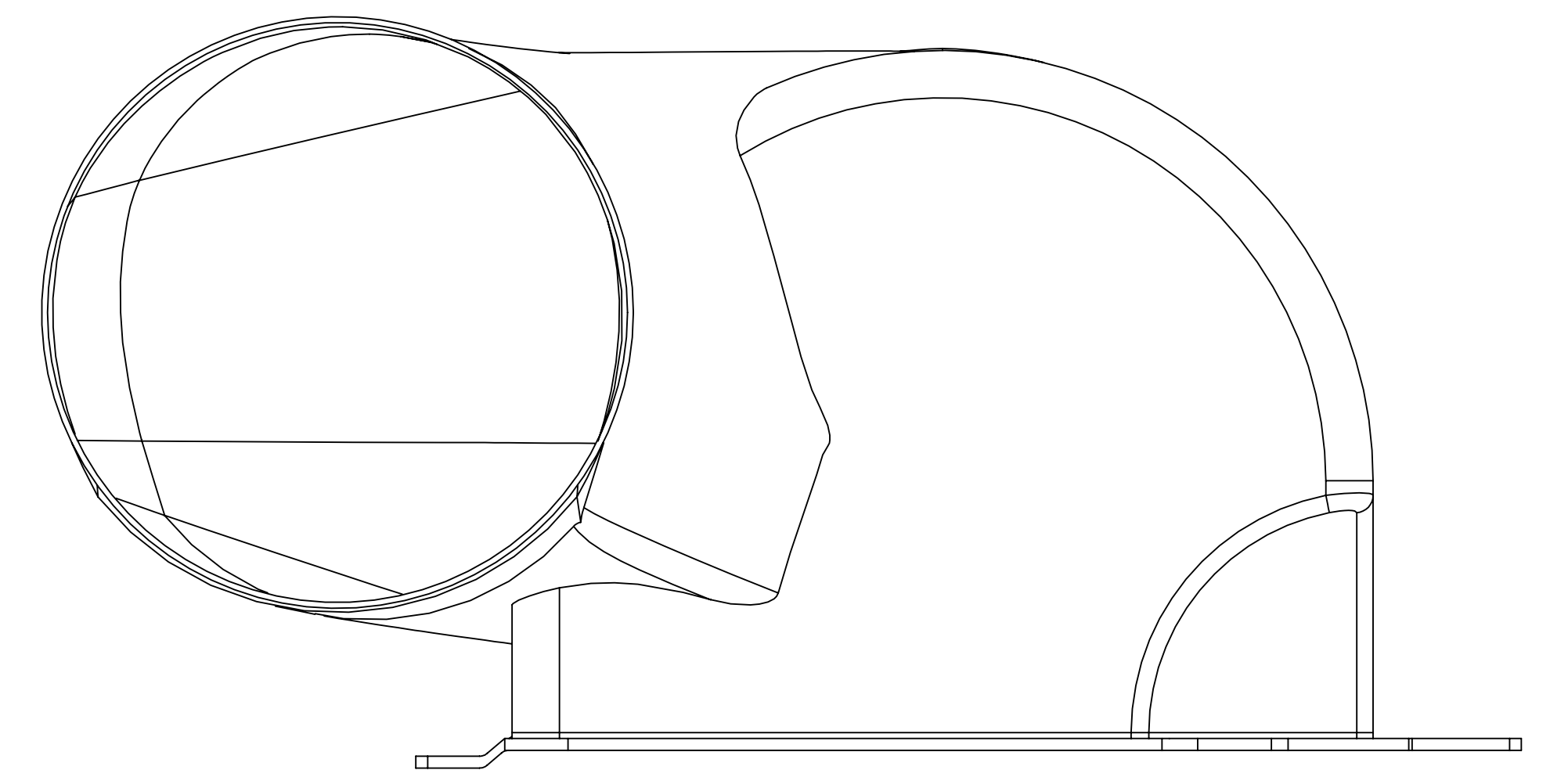
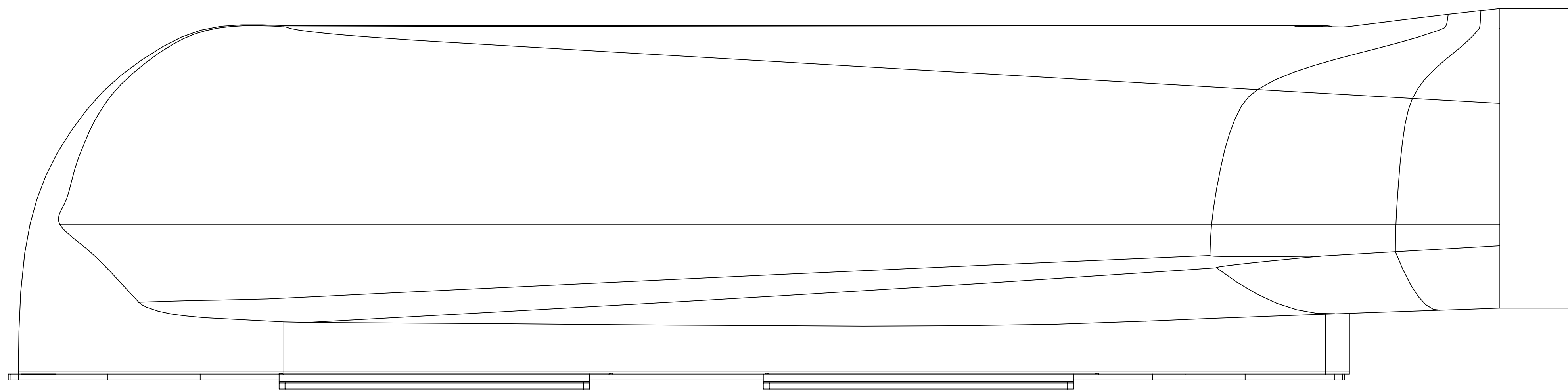


F	ISS: DESCRIPTION:		INITIALS:	E.C.N. NO:	DATE:	ALL DIMENSIONS IN MILLIMETERS			REMOVE ALL BURRS AND SHARP EDGES UNLESS OTHERWISE STATED		<div>REVERIE</div> <div>Reverie Ltd Unit 2 Chandlers Row Colchester Essex CO1 2HG 01206 866663 www.reverie.ltd.uk</div>	DRAWN: JC		APP:	PART NO(S): R01SE0544, R01SE0546	
	1 Original issue		JC		08/09/2020	TOLERANCES (AT 20°C) UNLESS OTHERWISE STATED			HOLES TO BS4500 1985.			DATE: 08/09/2020		TITLE: ZOLDER 122 MACAU LH/RH JC50		
				NOMINAL LINEAR DIMENSIONS			SURFACE FINISHES:		THREADS TO BS3643 1981 METRIC COURSE.			FINISH: SEE DRAWING		CUSTOMER: N/A		
				OVER-INCL < 0.00 0.00			MILLING N8		BSP THREADS TO BS 2779 MED FIT							
				0-200 +/- 0.50 +/- 0.15			TURNING N7		THIS A DRAWING IS A PRIVATE AND CONFIDENTIAL COMMUNICATION							
				250-1000 +/- 1.00 +/- 0.20			GRINDING N6									
			1000 PLUS +/- 2.00 +/- 0.30			ANG DIMS +/- 0.5'										
											SCALE: DO NOT SCALE		MATERIAL: C/FIBRE			
											WEIGHT: -		INSPECTION GRADE: A-1		PART QUALITY: B	
													DRG. NO.: SEE PART NO.S			



1:1 100% SCALE