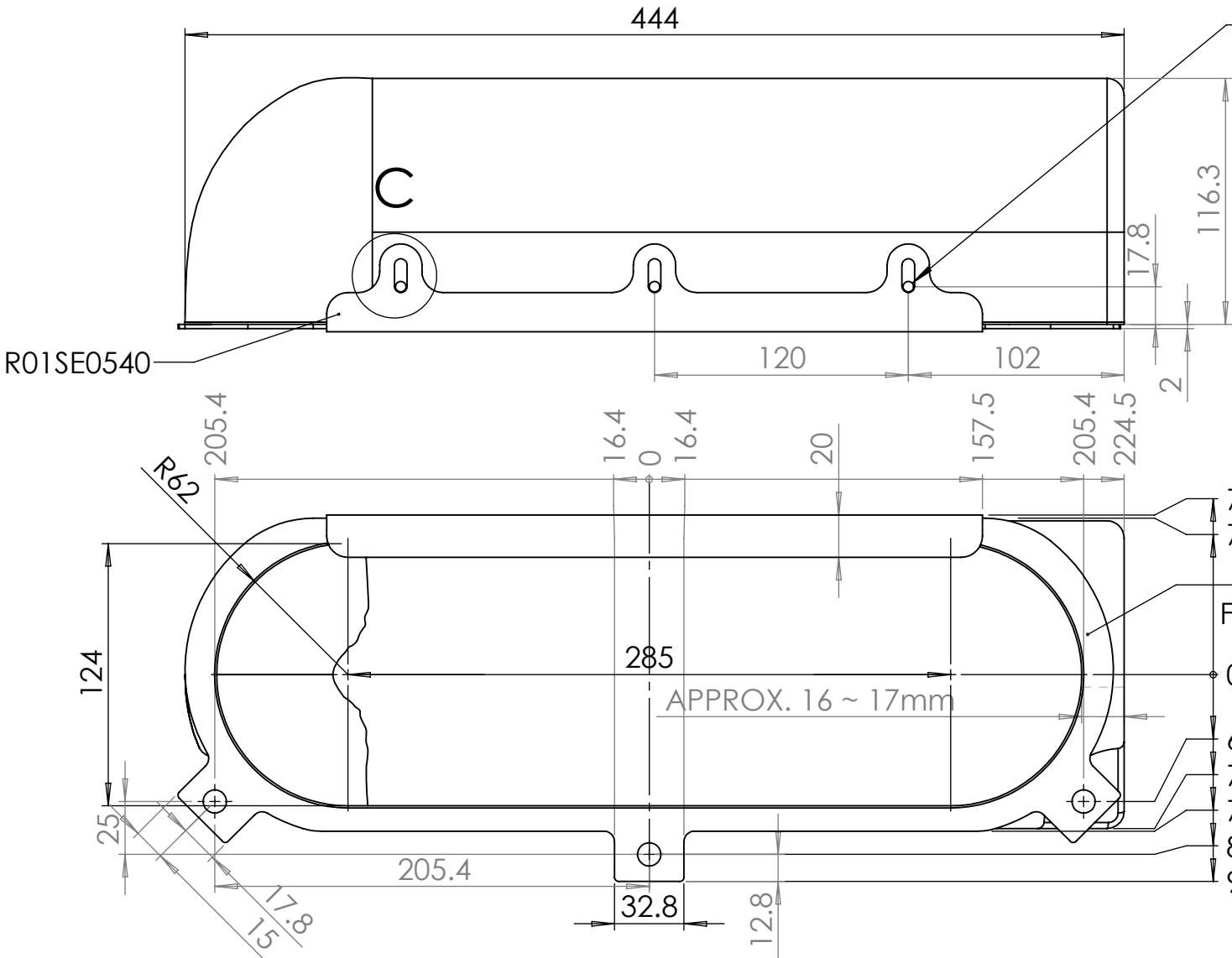
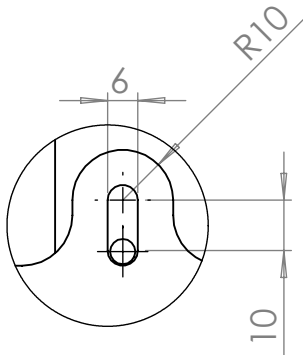


- NOTES:
- R01SE0514 RH - C/FIBRE
  - R01SE0515 RH - GRP
  - R01SE0516 RH - C/FIBRE
  - R01SE0517 RH - GRP
  - VOLUME: 5.7L

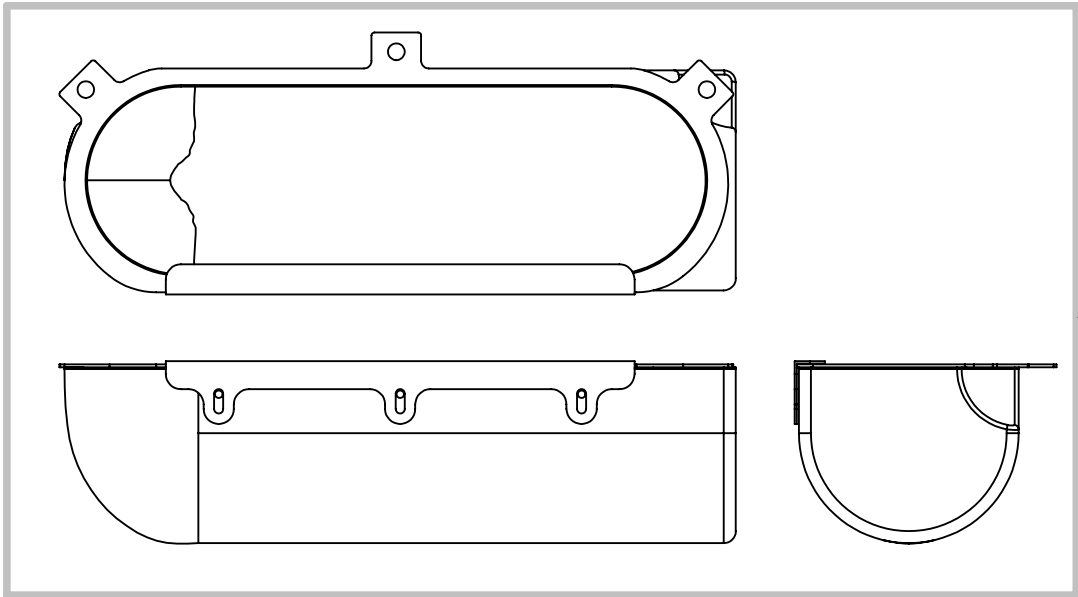
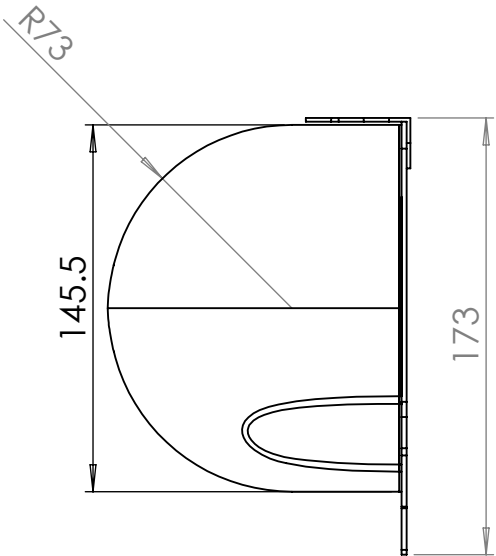


MEASUREMENT IS TO BOTTOM OF BOX BEFORE FACEPLATE BONDED

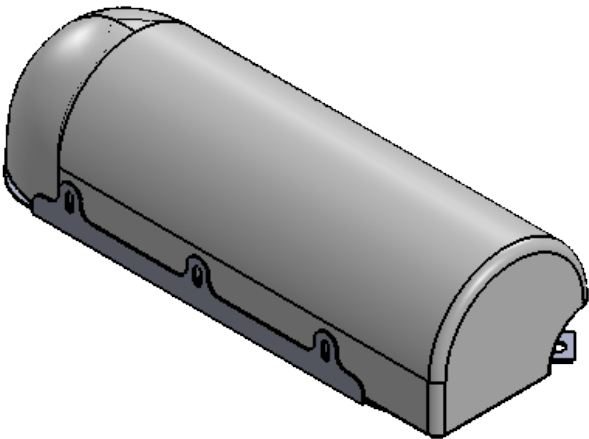
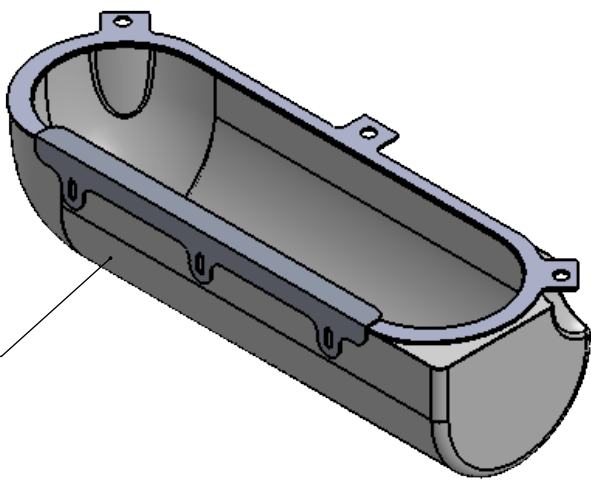
WHEN FACEPLATE CLAMP IS PRESSED AGAINST THE FACEPLATE THE HOLES IN THE BOX SHOULD BE AT THE BOTTOM OF THE SLOT. CHECK POSITION FIRST BEFORE DRILLING



DETAIL C  
SCALE 2 : 3



R01SE0516/R01SE0517  
LH MIRRORED FROM  
RH



R01SE0514/R01SE0515 RH

PRODUCTION\QUALITY SIGN OFF:	SIMON FARREN
COSTING\SPECIFICATION SIGN OFF:	SIMON FARREN

A3 SHEET 1 OF 2

ISS: DESCRIPTION:

INITIALS: E.C.N. NO: DATE:

ALL DIMENSIONS IN MILLIMETERS

REMOVE ALL BURRS AND SHARP EDGES UNLESS OTHERWISE STATED

HOLES TO BS4500 1985.

THREADS TO BS3643 1981 METRIC COURSE.

BSP THREADS TO BS 2779 MED FIT

THIS A DRAWING IS A PRIVATE AND CONFIDENTIAL COMMUNICATION

NOMINAL LINEAR DIMENSIONS			SURFACE FINISHES:	
OVER-INCL	< 0.00	0.00	MILLING	N8
0-200	+/- 0.50	+/- 0.15	TURNING	N7
250-1000	+/- 1.00	+/- 0.20	GRINDING	N6
1000 PLUS	+/- 2.00	+/- 0.30		

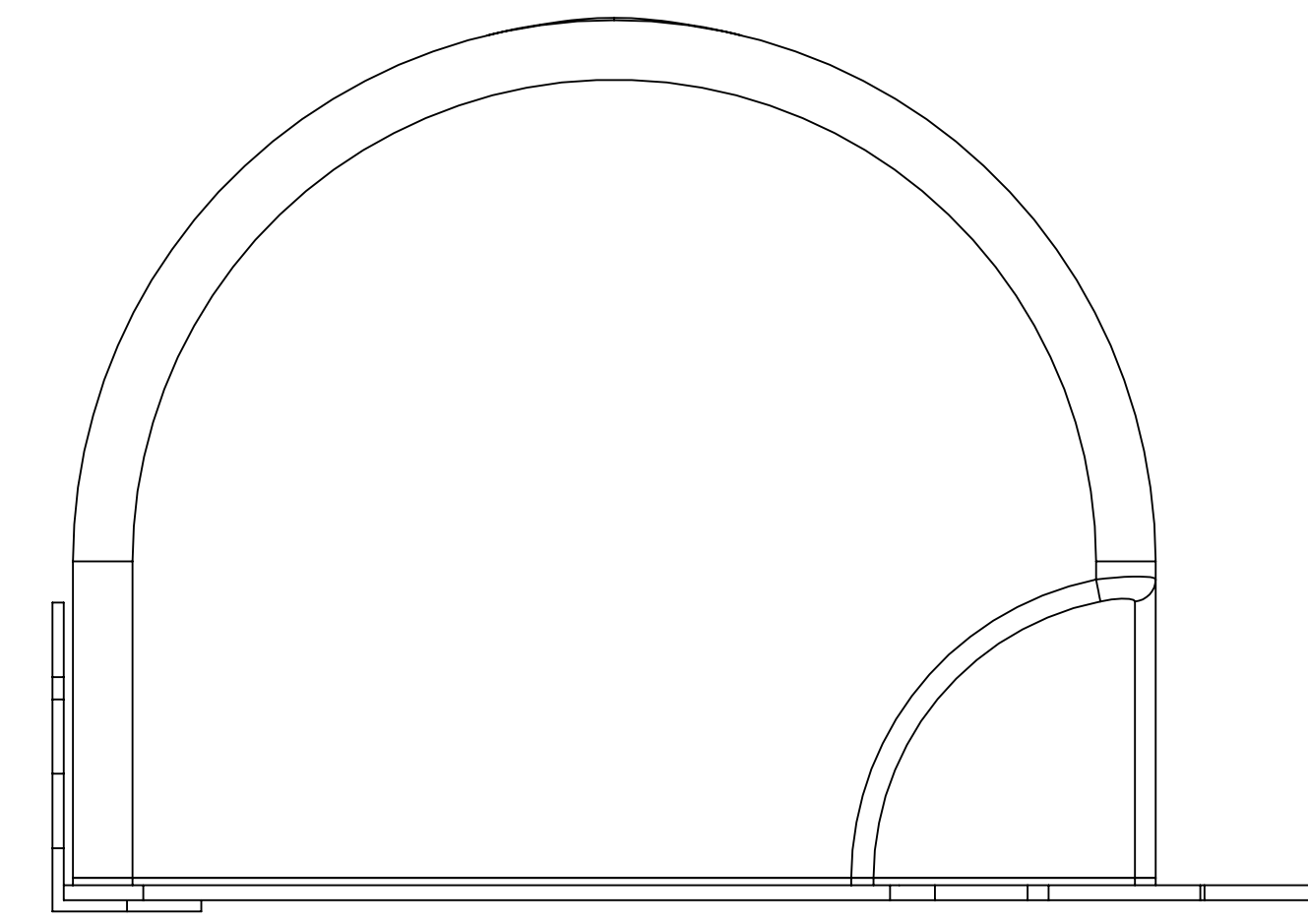
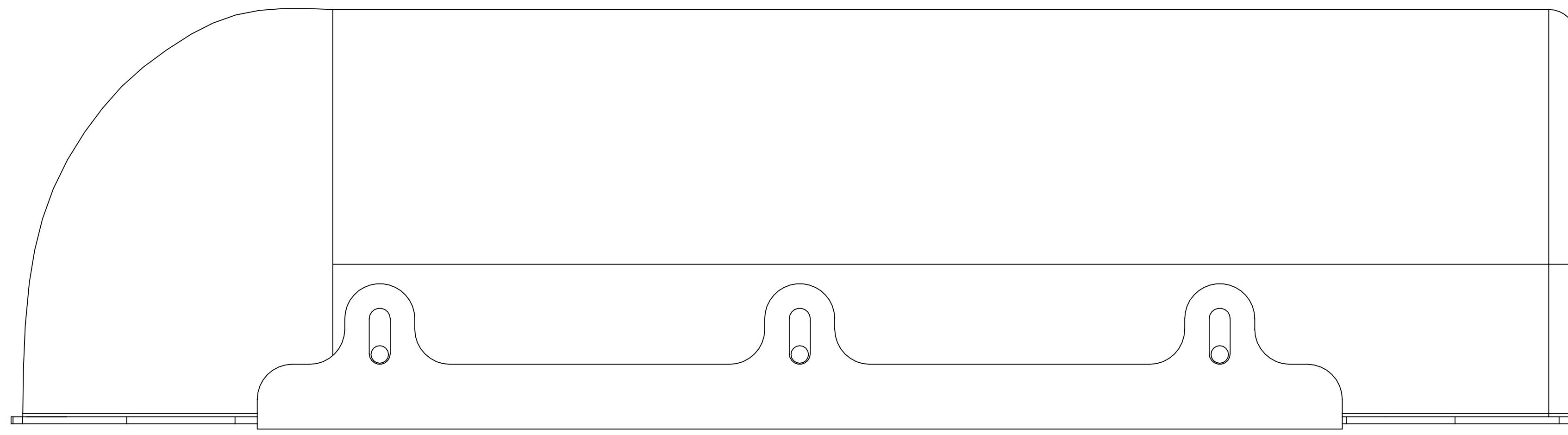
ANG DIMS +/- 0.5°



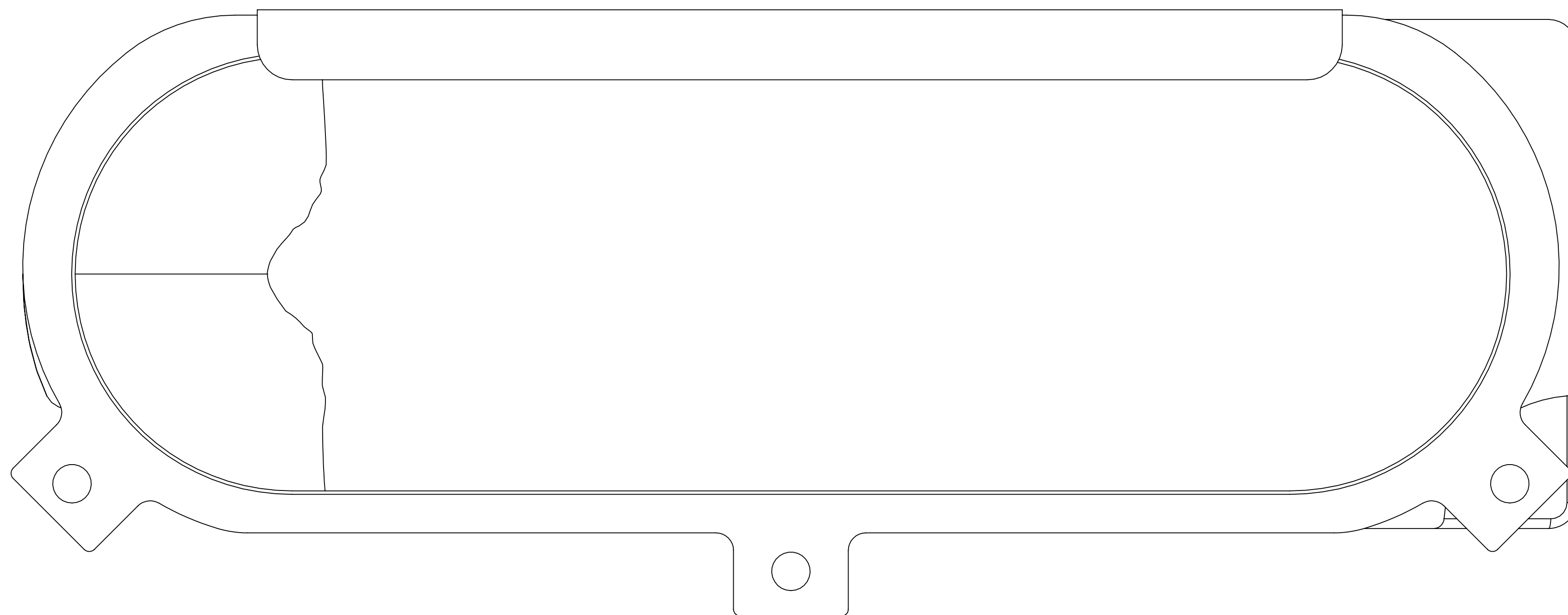
Reverie Ltd  
Unit 2 Chandlers Row  
Colchester  
Essex  
CO1 2HG  
01206 866663  
www.reverie.ltd.uk

DRAWN: JC  
DATE: 02/09/2020  
FINISH: SEE DRAWING  
SCALE: DO NOT SCALE  
WEIGHT: -

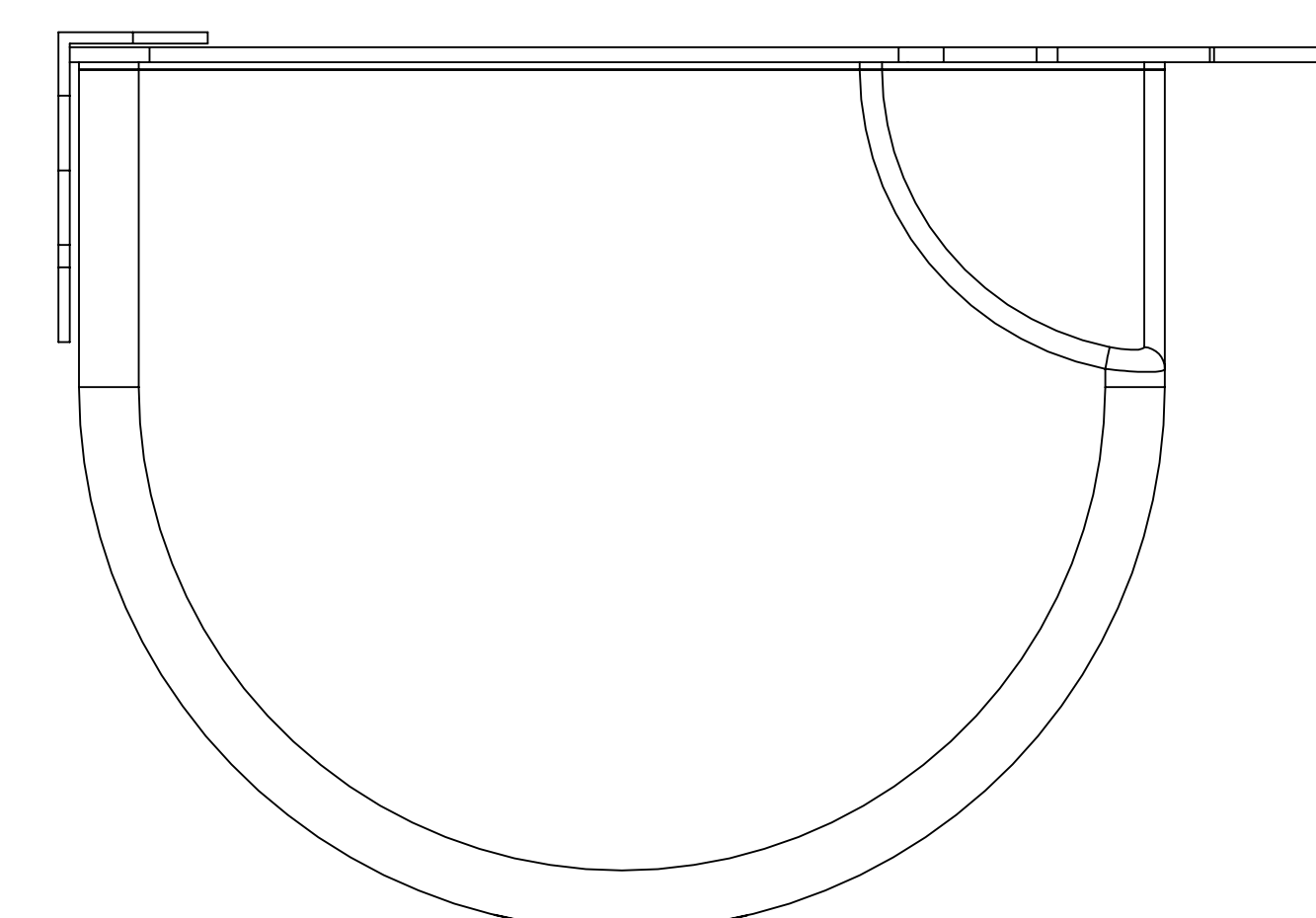
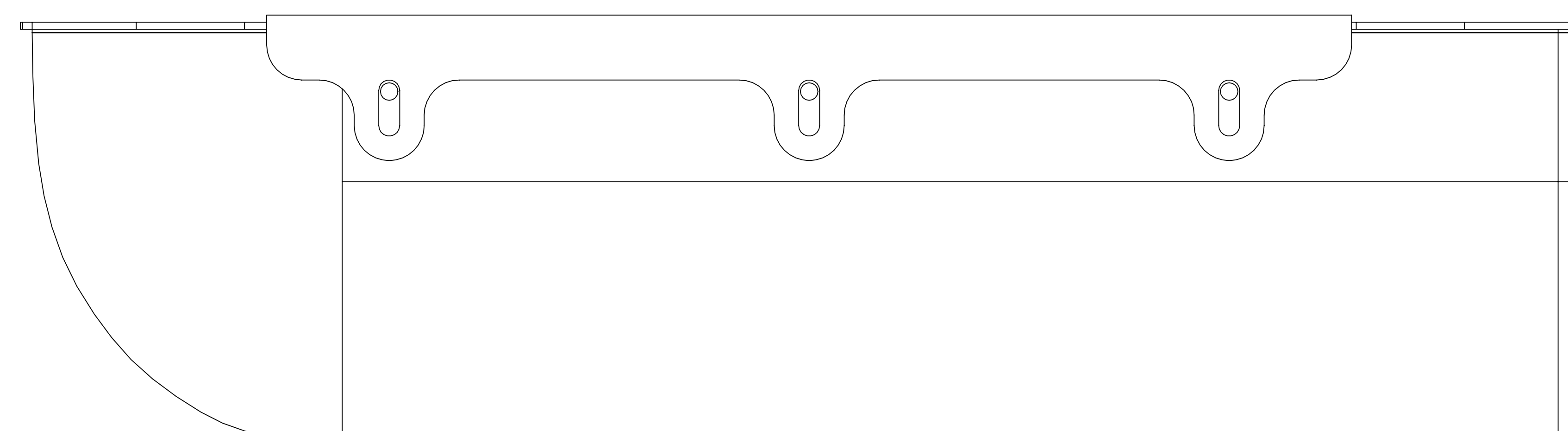
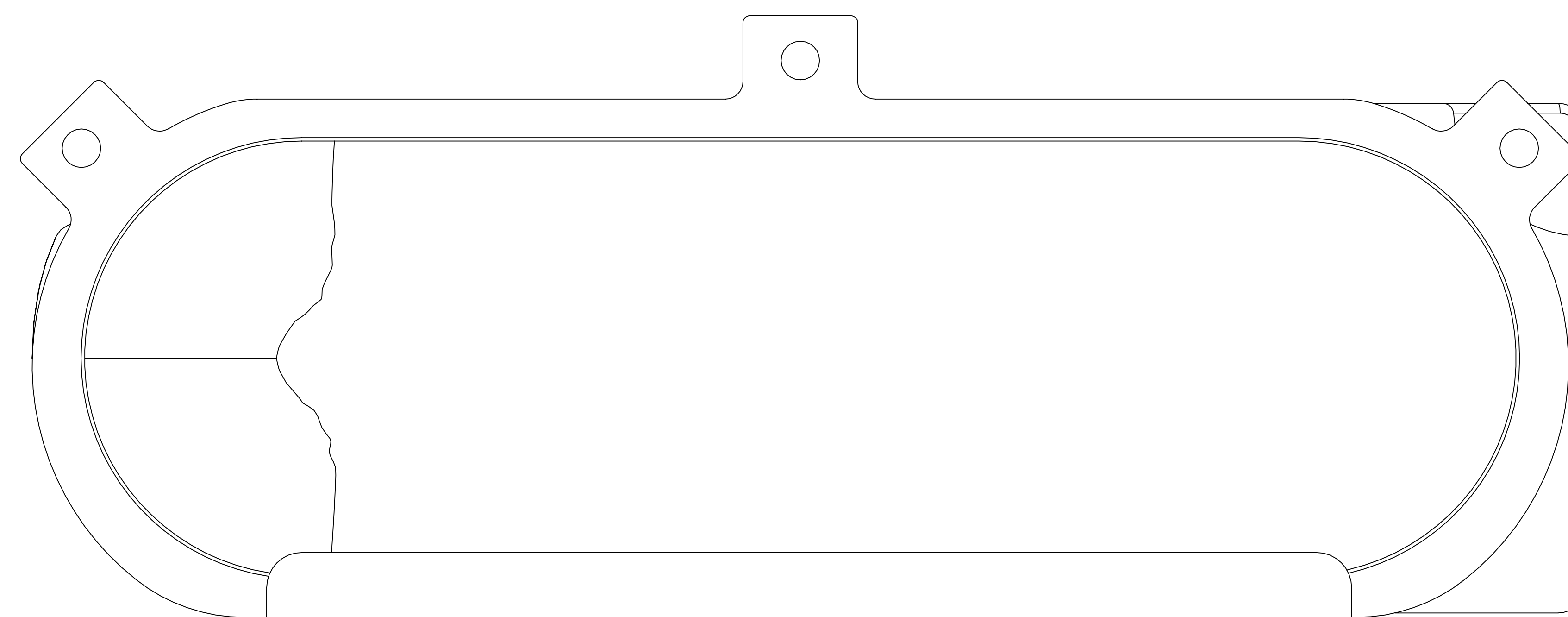
PART NO(S): R01SE0514, R01SE0515, R01SE0516, R01SE0517  
TITLE: ZOLDER 112D LH/RH BLANK JC50  
CUSTOMER: N/A  
MATERIAL: SEE SHEET  
INSPECTION GRADE: A-1 PART QUALITY: B  
DRG. NO.: SEE PART NO.S



**R01SE0514/R01SE0515 RH**



**R01SE0515/R01SE0517 LH**



**1:1 100% SCALE**