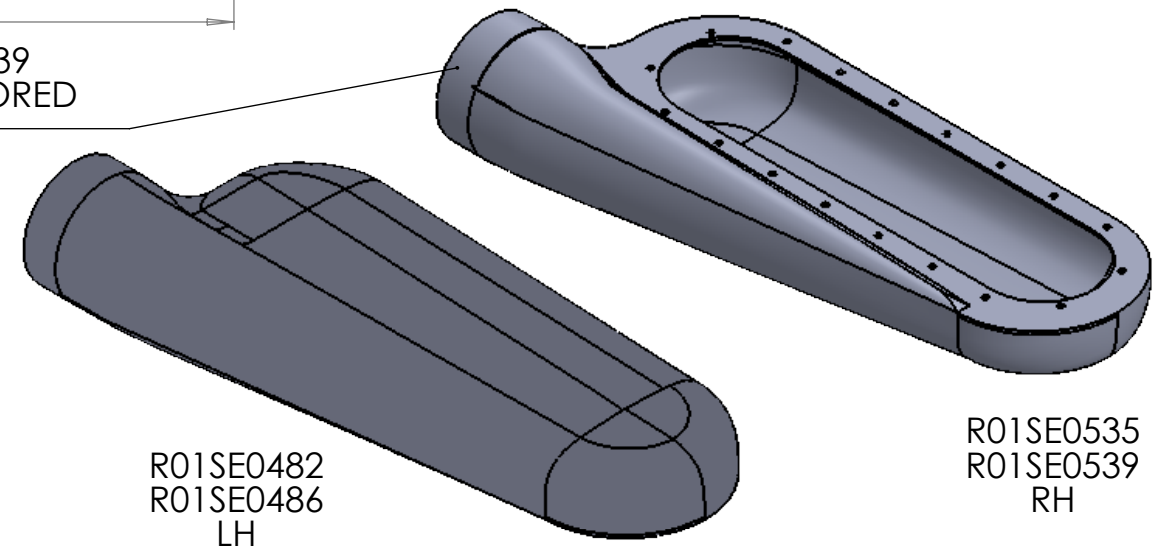
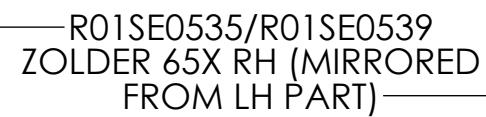


- R01SE0482 - C/FIBRE LH
- R01SE0486 - GRP LH
- R01SE0535 - C/FIBRE RH
- R01SE0539 - GRP RH
- VOLUME: 4.2L



ISS:	DESCRIPTION:	INITIALS:	E.C.N. NO:	DATE:
1	Original issue	JC		10/09/2020

ALL DIMENSIONS IN MILLIMETERS			
TOLERANCES (AT 20°C) UNLESS OTHERWISE STATED			
NOMINAL LINEAR DIMENSIONS			SURFACE FINISHES: MILLING N8 TURNING N7 GRINDING N6 ANG DIMS
OVER-INCL	< 0.00	0.00	
0-200	+/- 0.50	+/- 0.15	
250-1000	+/- 1.00	+/- 0.20	
1000 PLUS	+/- 2.00	+/- 0.30	

REMOVE ALL BURRS AND SHARP EDGES UNLESS OTHERWISE STATED

HOLES TO BS4500 1985.

THREADS TO BS3643 1981 METRIC COURSE.

BSP THREADS TO BS 2779 MED FIT

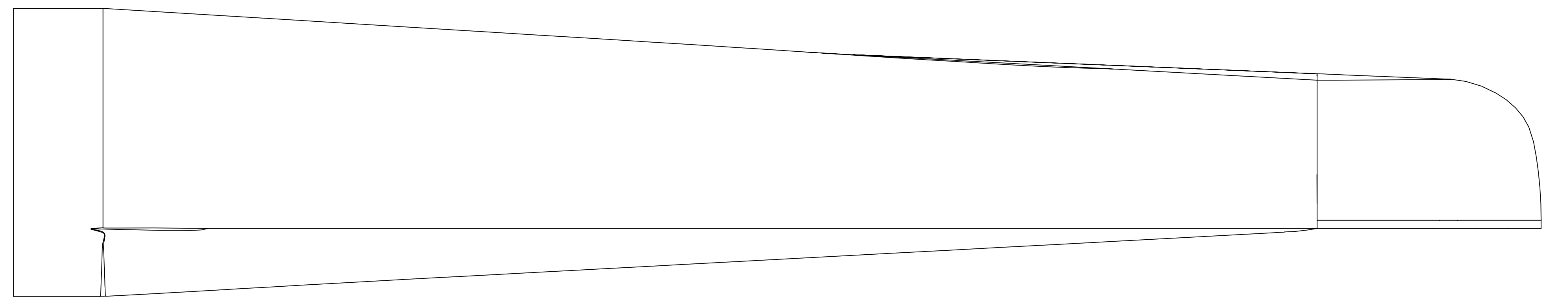
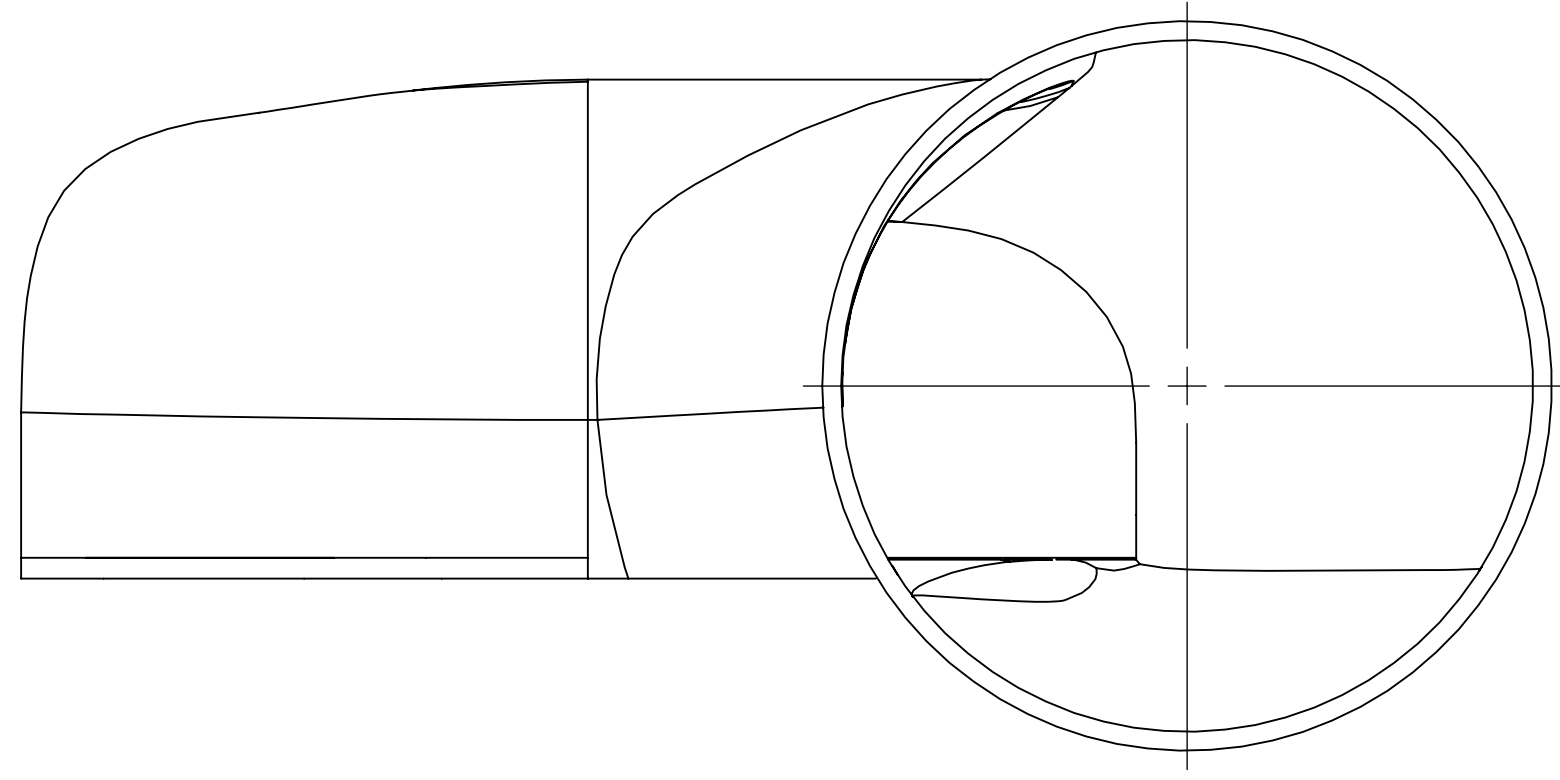
THIS A DRAWING IS A PRIVATE AND CONFIDENTIAL COMMUNICATION

REVERIE

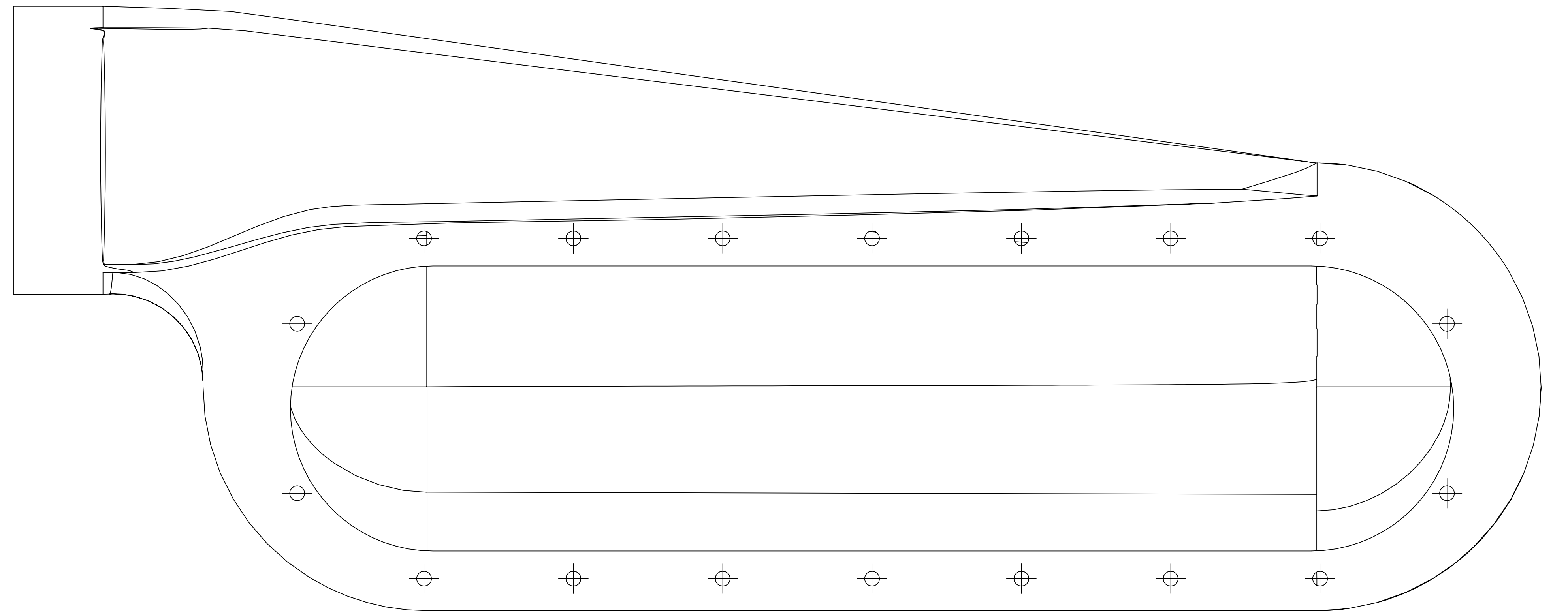
Reverie Ltd
Unit 2 Chandlers Row
Colchester
Essex
CO1 2HG
01206 866663
www.reverie.ltd.uk

DRAWN: JC	APP:
DATE: 10/09/2020	
FINISH: SEE DRAWING	
SCALE: DO NOT SCALE	
WEIGHT: -	

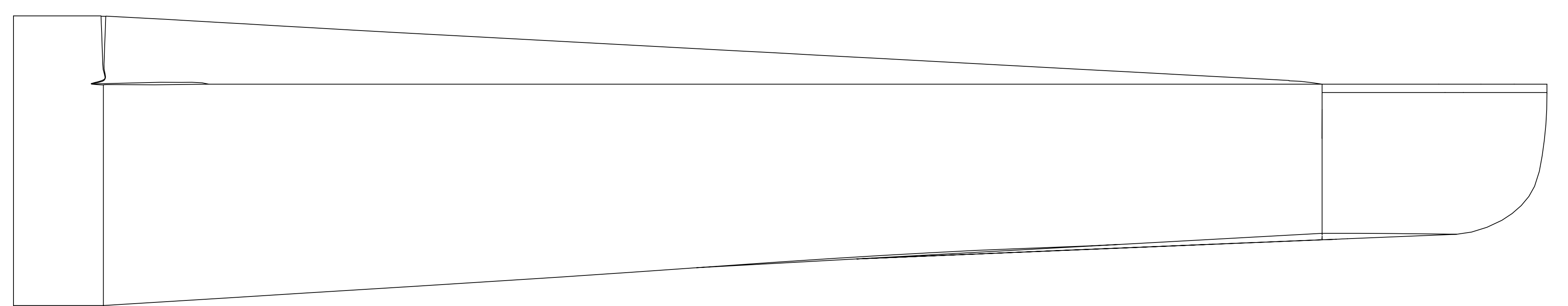
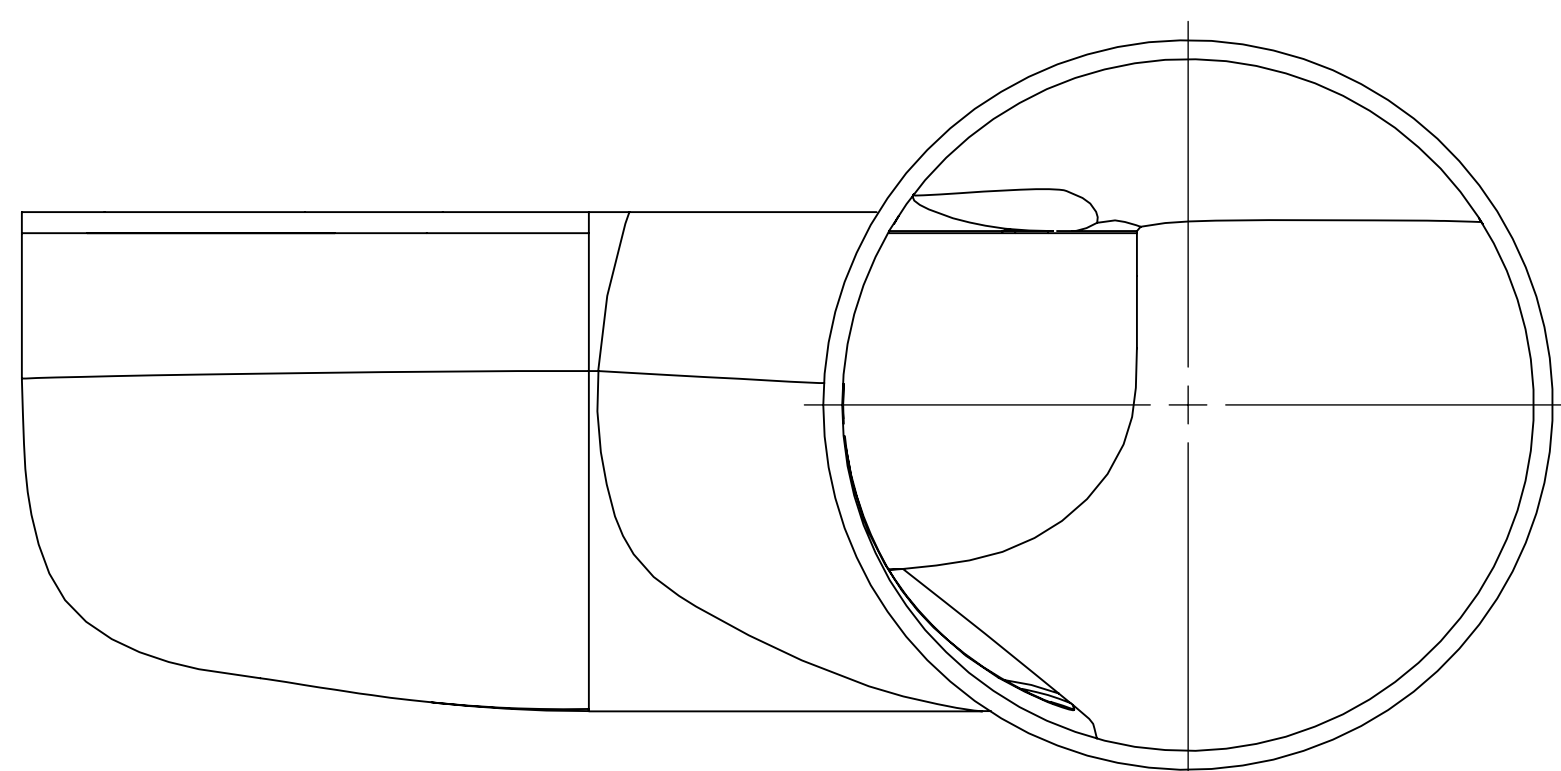
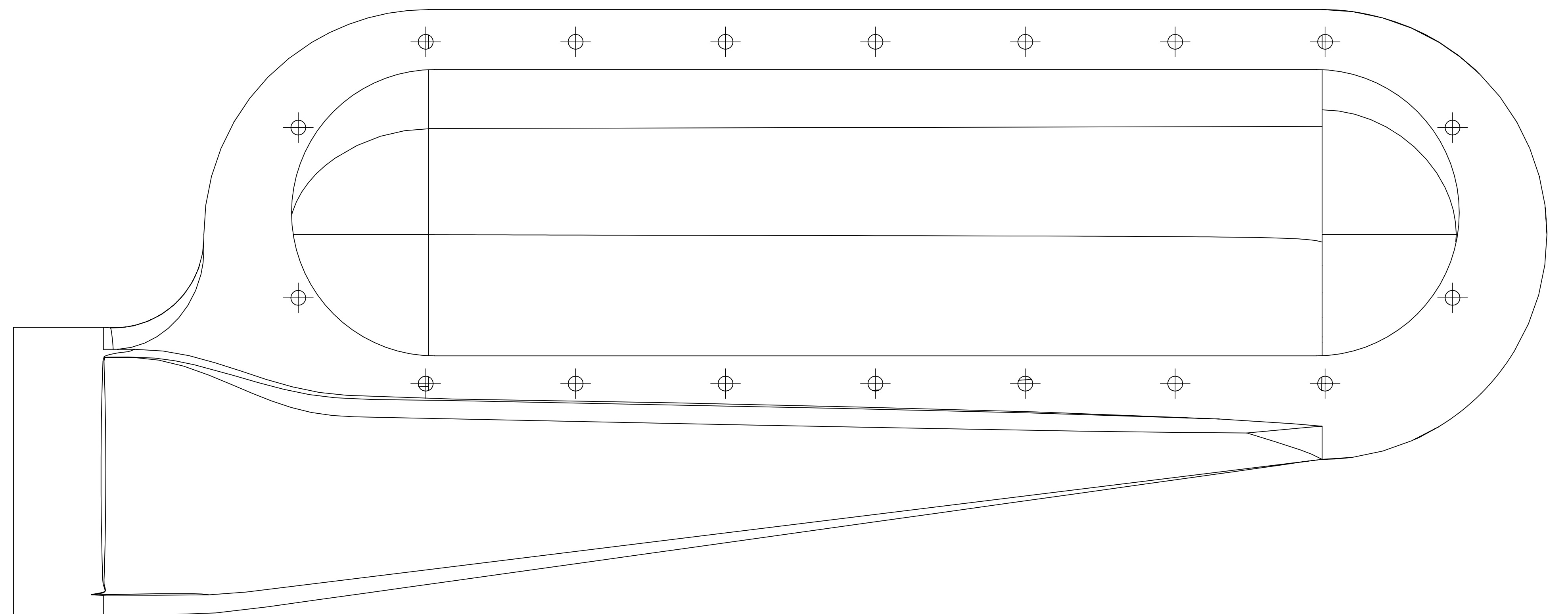
PART NO(S): R01SE0482, R01SE0486, R01SE0535, R01SE0539	
TITLE: ZOLDER 65X LH/RH 100mm TAPERED INLET	
CUSTOMER: N/A	
MATERIAL: SEE SHEET	
INSPECTION GRADE: A-1	PART QUALITY: B
DRG. NO.: SEE PART NO.S	



R01SE0482/R01SE0586



R01SE0535/R01SE0539



1:1 100% SCALE