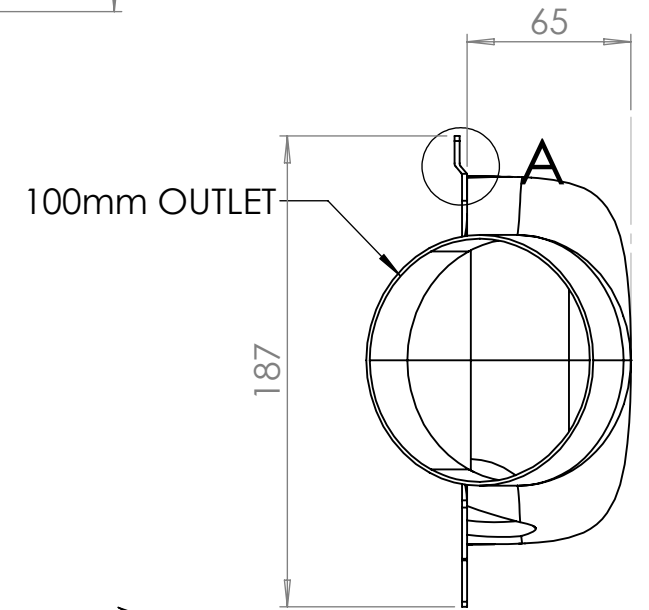
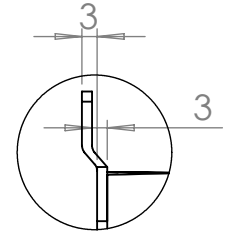
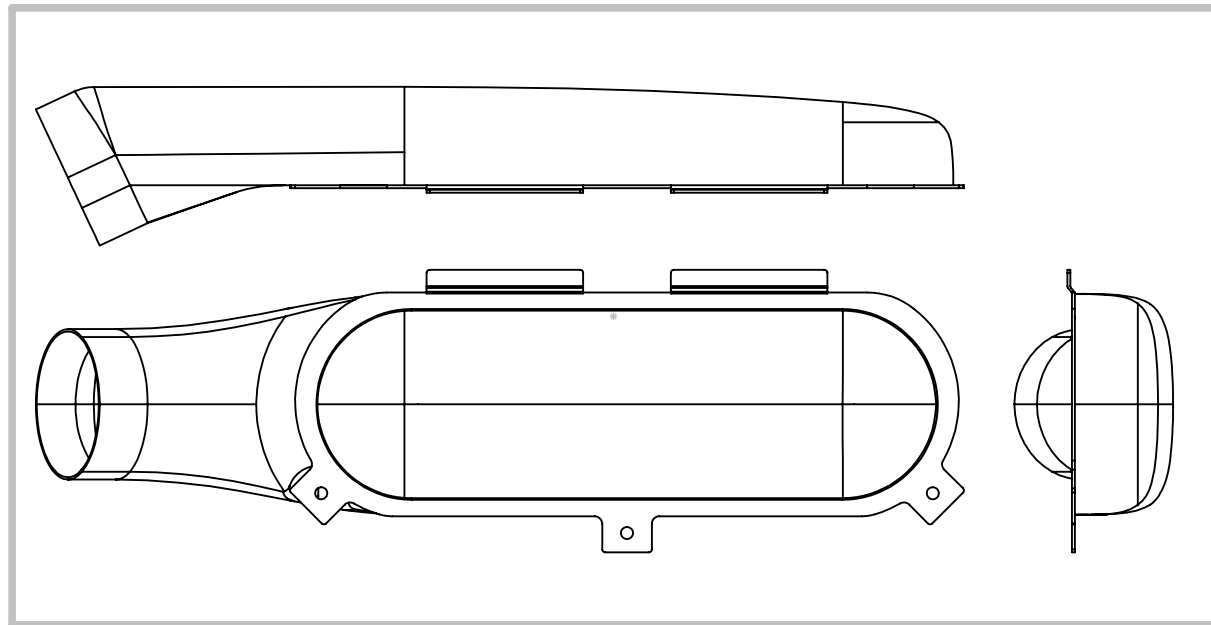


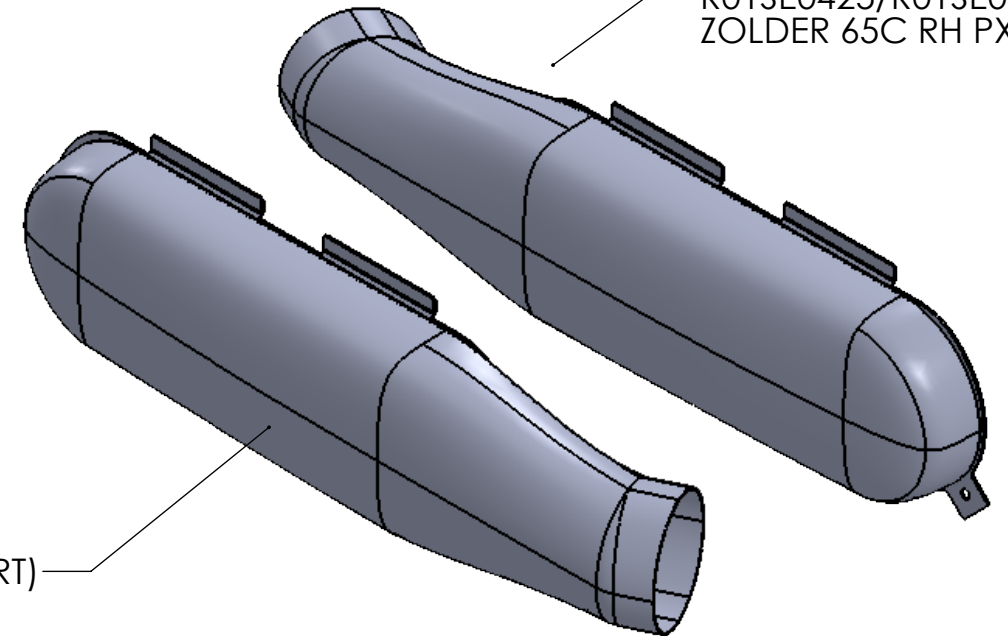
- R01SE0425 - C/FIBRE RH
- R01SE0443 - GRP RH
- R01SE0434 - C/FIBRE LH
- R01SE0445 - GRP LH
- VOLUME: 4.2L




—R01SE0425/R01SE0443
ZOLDER 65C RH PX600

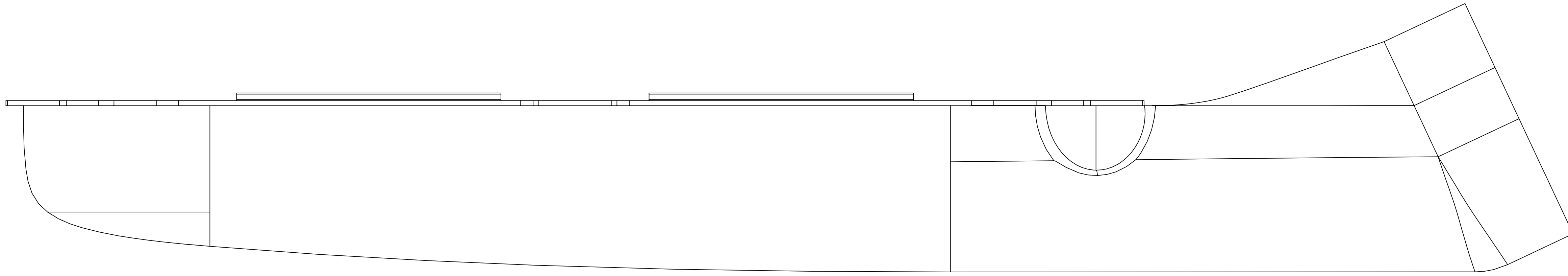
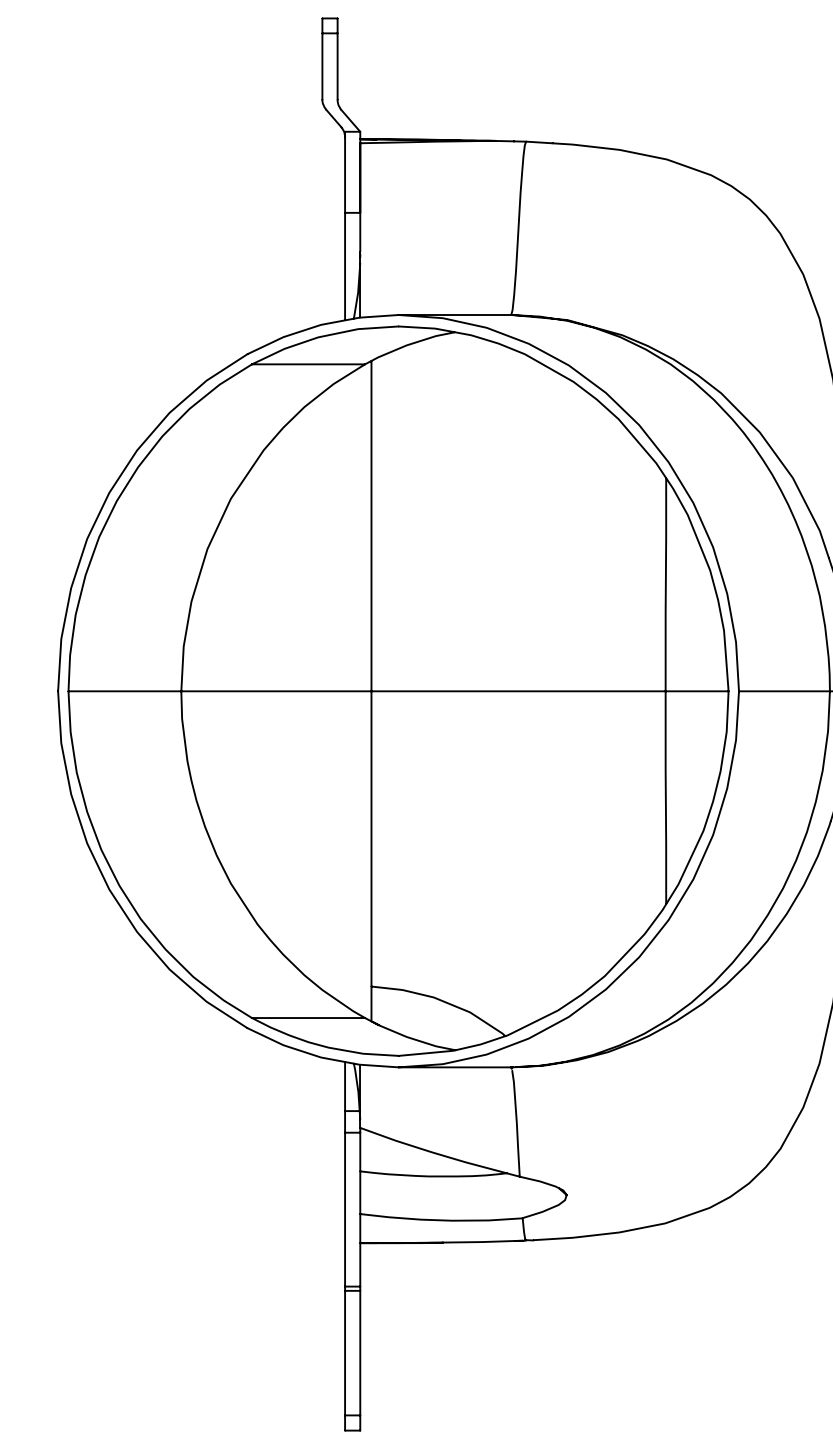
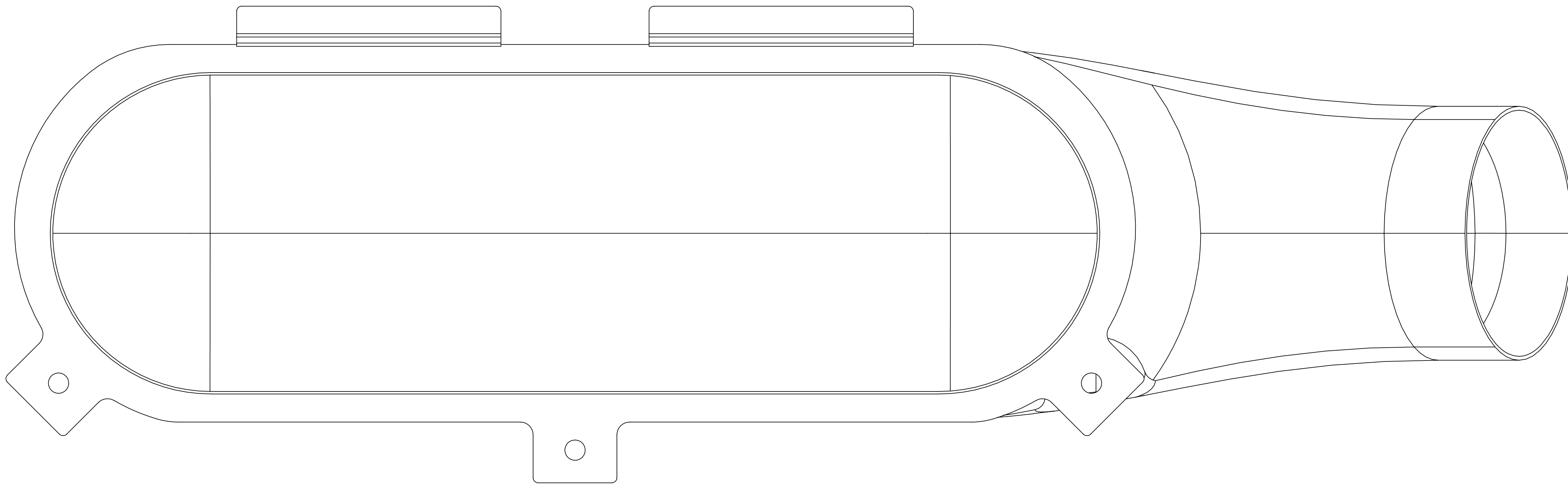


—R01SE0434/R01SE0445
ZOLDER 65C LH PX600
(MIRRORED FROM RH PART)

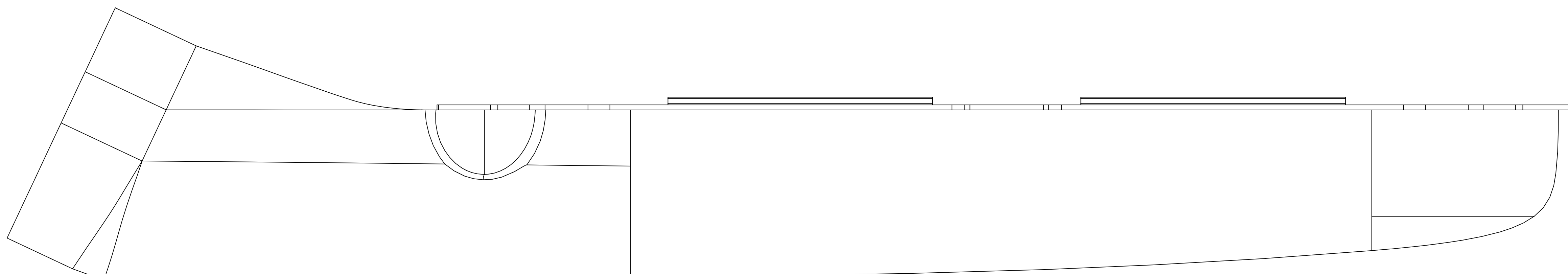
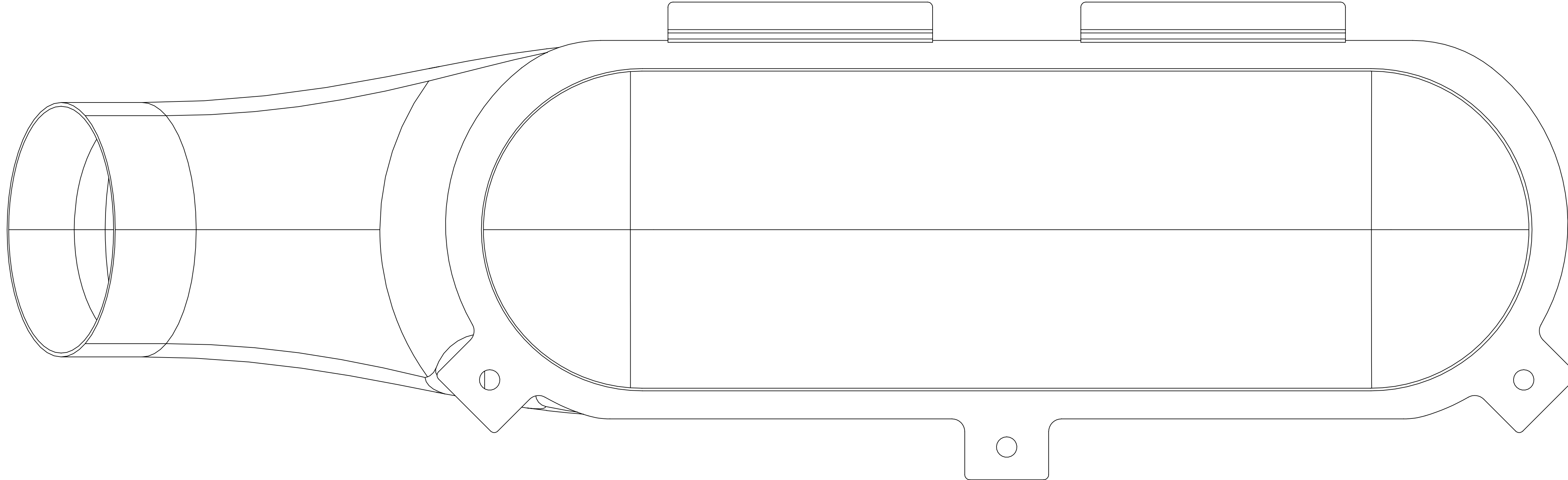
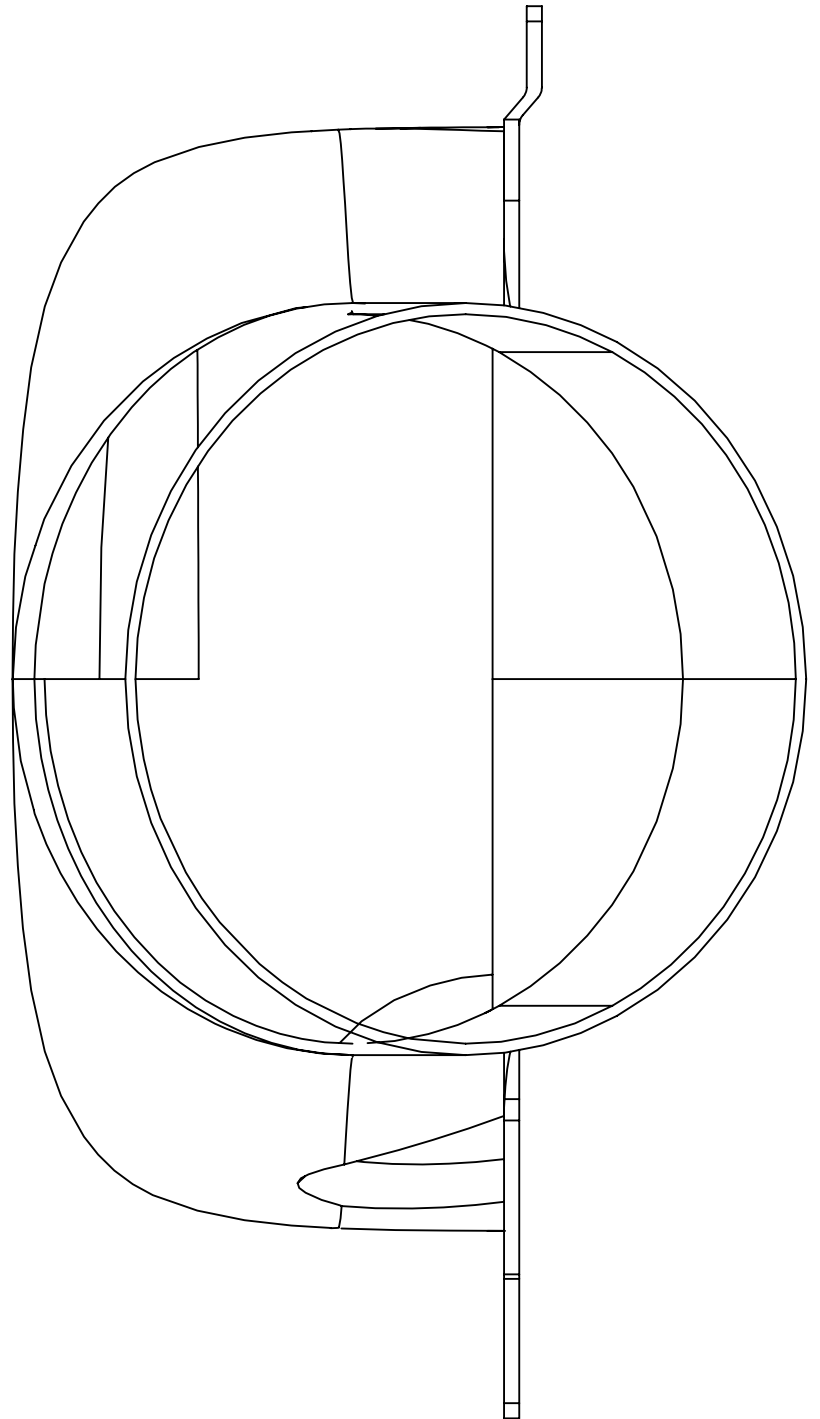


PRODUCTION\QUALITY SIGN OFF:	SIMON FARREN		A3	SHEET 1 OF 2
COSTING\SPECIFICATION SIGN OFF:	SIMON FARREN			

ISS: DESCRIPTION:		INITIALS:	E.C.N. NO:	DATE:	ALL DIMENSIONS IN MILLIMETERS		REMOVE ALL BURRS AND SHARP EDGES UNLESS OTHERWISE STATED		<div></div> <div>Reverie Ltd Unit 2 Chandlers Row Colchester Essex CO1 2HG 01206 866663 www.reverie.ltd.uk</div>		DRAWN: JC	APP:	PART NO(S): R01SE0425, R01SE0434, R01SE0443, R01SE0445	
1	Original issue	JC		03/09/2020	TOLERANCES (AT 20°C) UNLESS OTHERWISE STATED		HOLES TO BS4500 1985.				DATE: 03/09/2020	TITLE: ZOLDER 65C LH/RH JC50		
					NOMINAL LINEAR DIMENSIONS		SURFACE FINISHES:				FINISH: SEE DRAWING	CUSTOMER: N/A		
					OVER-INCL < 0.00 0.00		MILLING N8 TURNING N7 GRINDING N6				SCALE: DO NOT SCALE	MATERIAL: SEE SHEET		
					0-200 +/- 0.50 +/- 0.15						WEIGHT: -	INSPECTION GRADE: A-1 PART QUALITY: B		
					250-1000 +/- 1.00 +/- 0.20						DRG. NO.: SEE PART NO.S			
					1000 PLUS +/- 2.00 +/- 0.30		ANG DIMS +/- 0.5							



R01SB0425/R01SB0443



R01SB0425/R01SB0443

1:1 100% SCALE