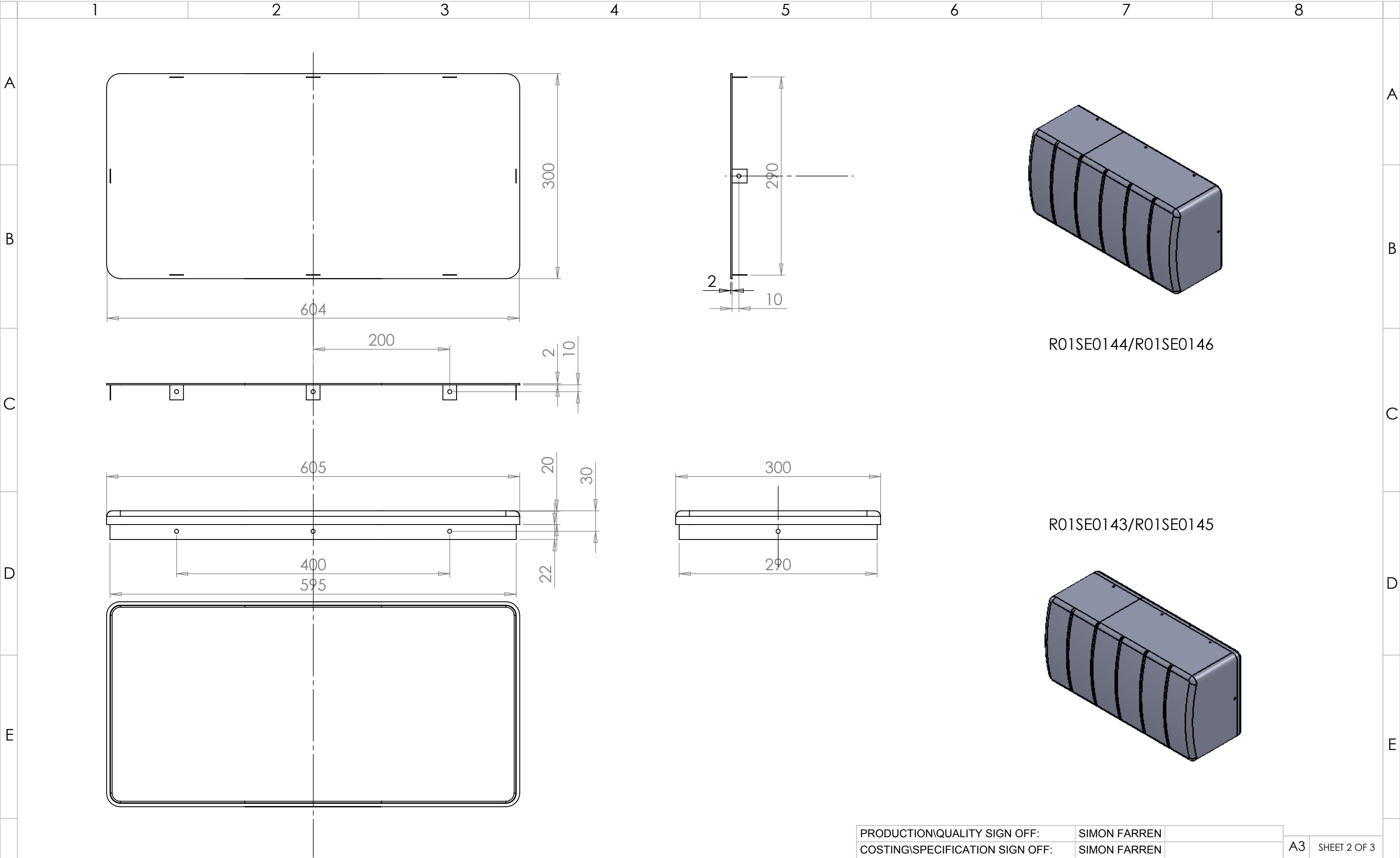
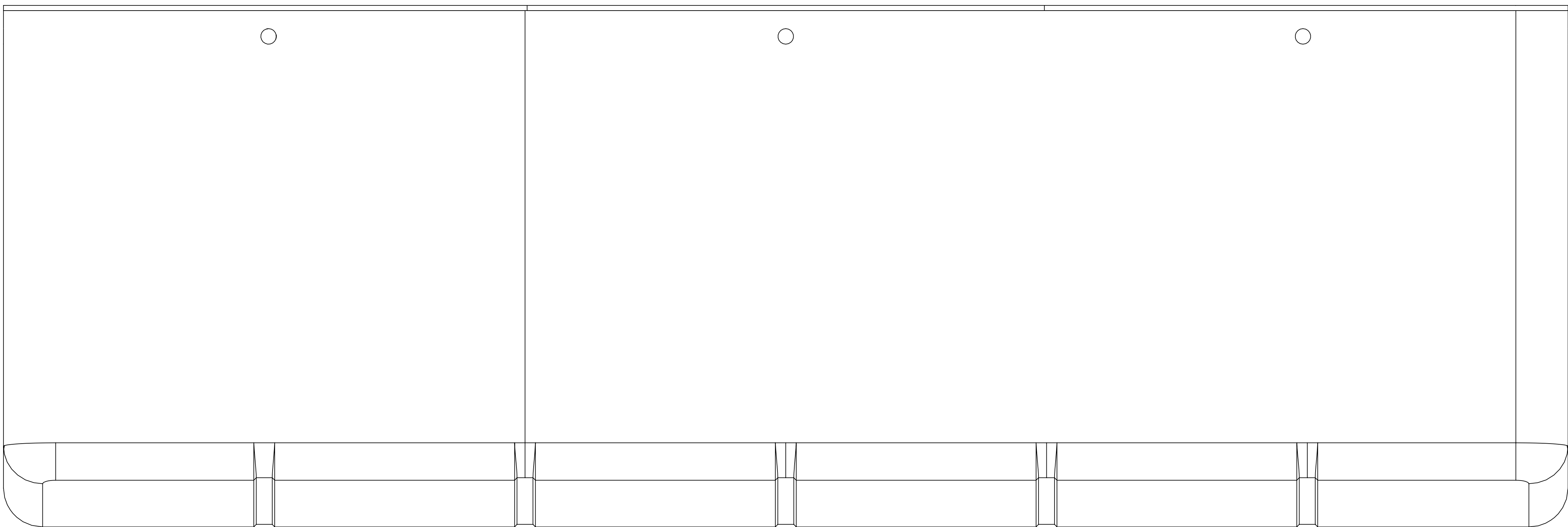
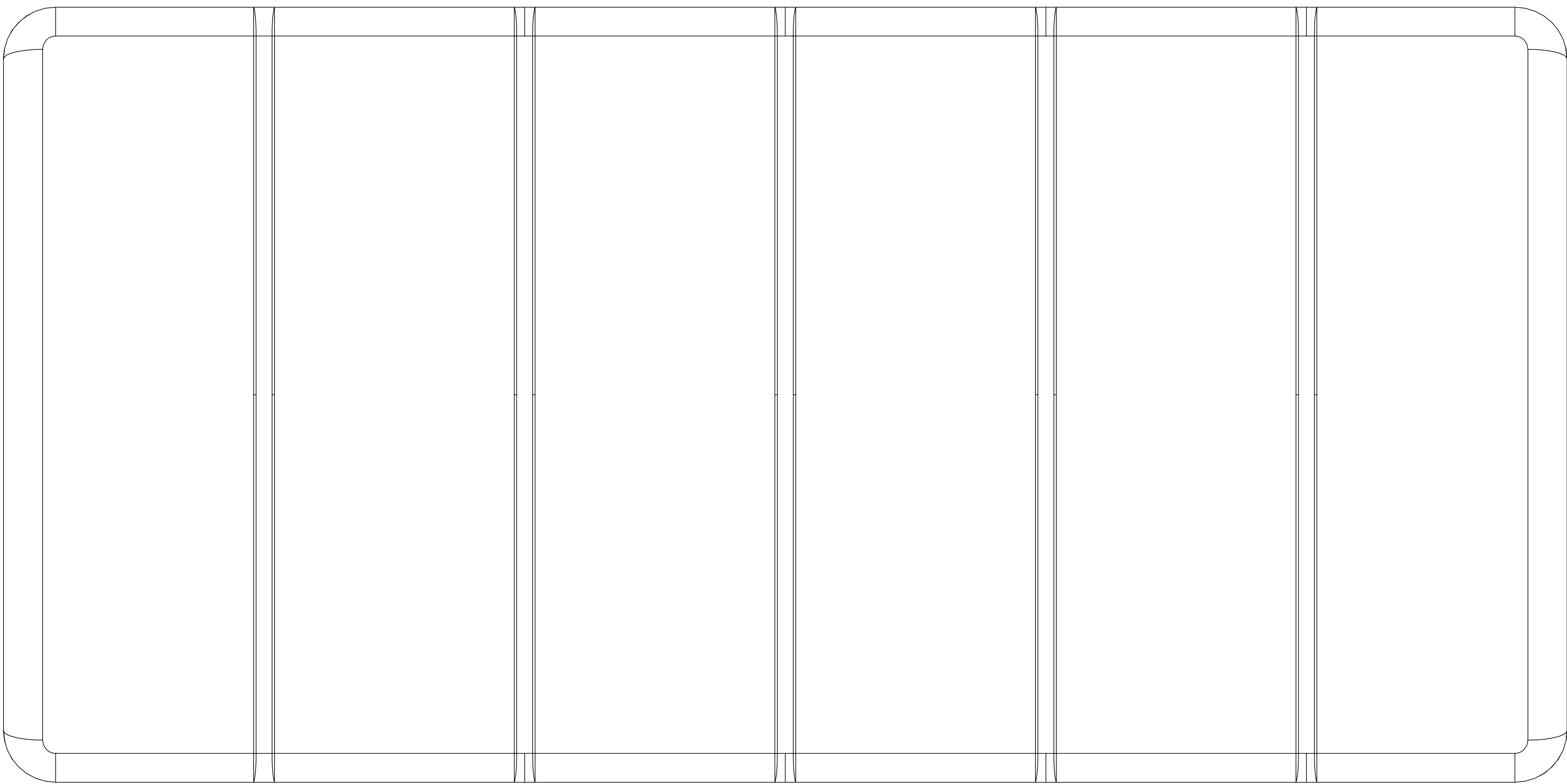
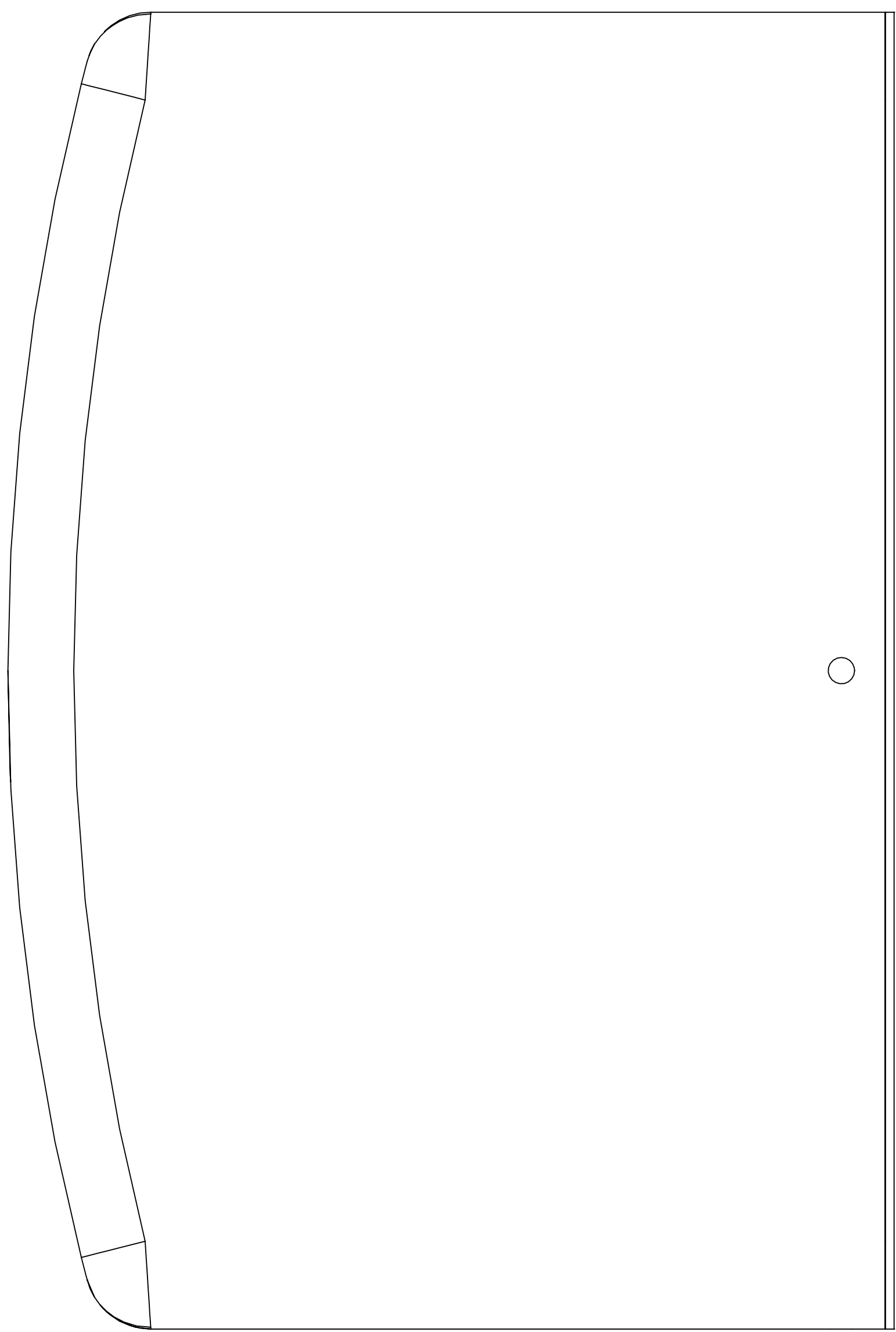
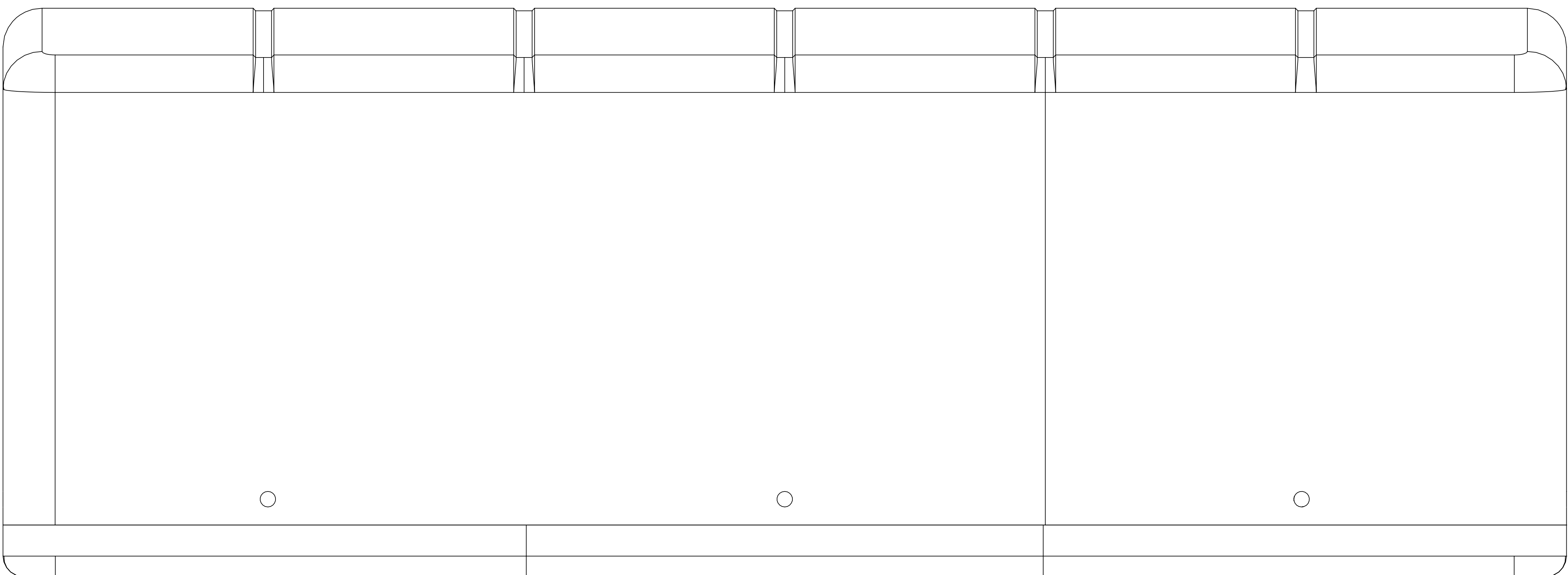
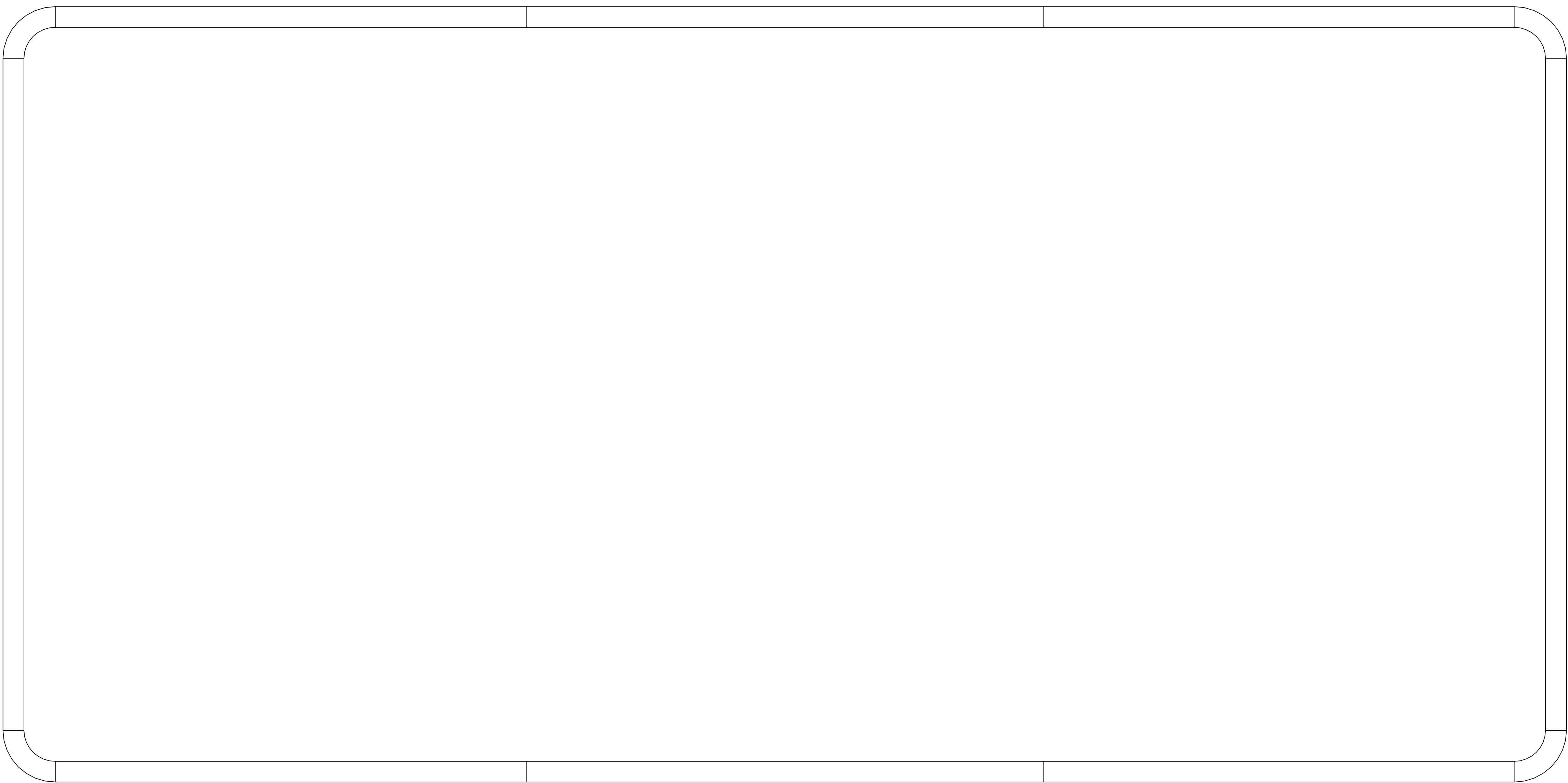
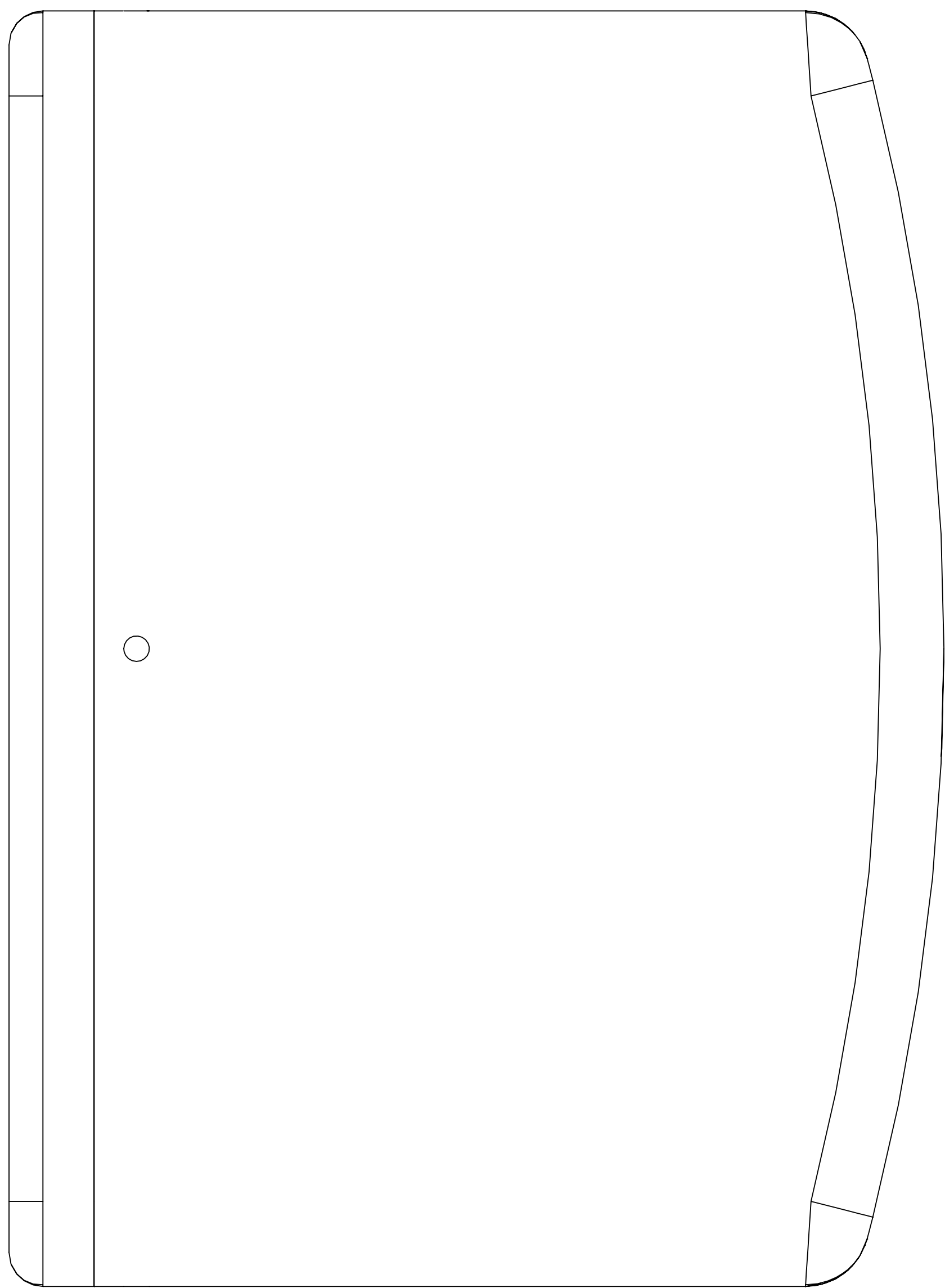


										PRODUCTION\QUALITY SIGN OFF:		SIMON FARREN						A3		SHEET 1 OF 3	
										COSTING\SPECIFICATION SIGN OFF:		SIMON FARREN									
F	ISS: DESCRIPTION:		INITIALS:	E.C.N. NO:	DATE:	ALL DIMENSIONS IN MILLIMETERS			REMOVE ALL BURRS AND SHARP EDGES UNLESS OTHERWISE STATED		<div>REVERIE</div> <div>Reverie Ltd Unit 2 Chandlers Row Colchester Essex CO1 2HG 01206 866663 www.reverie.ltd.uk</div>		DRAWN:	APP:	PART NO(S).: R01SE0143, R01SE0144, R01SE0145, R01SE0146						
	1	Original issue	JC		19/07/2011	TOLERANCES (AT 20°C) UNLESS OTHERWISE STATED			HOLES TO BS4500 1985.				DATE:	19/07/2011	TITLE: HOCKENHEIM 605 AIR BOX KITS						
						NOMINAL LINEAR DIMENSIONS			SURFACE FINISHES:												
						OVER-INCL			< 0.00	0.00			MILLING	N8							
						0-200			+/- 0.50	+/- 0.15			TURNING	N7							
						250-1000			+/- 1.00	+/- 0.20			GRINDING	N6							
						1000 PLUS			+/- 2.00	+/- 0.30	ANG DIMS +/- 0.5										
																		</			



ISS: DESCRIPTION:		INITIALS:	E.C.N. NO:	DATE:	ALL DIMENSIONS IN MILLIMETERS		REMOVE ALL BURRS AND SHARP EDGES UNLESS OTHERWISE STATED	<div>REVERIE</div> <div>Reverie Ltd Unit 2 Chandlers Row Colchester Essex CO1 2HG 01206 866663 www.reverie.ltd.uk</div>	DRAWN: CA	APP:	PART NO(S): R01SE0143, R01SE0144, R01SE0145, R01SE0146	
1	Original issue	JC		19/07/2011	TOLERANCES (AT 20°C) UNLESS OTHERWISE STATED		HOLES TO BS4500 1985.		DATE: 19/07/2011		TITLE: HOCKENHEIM 605 AIR BOX KITS	
					NOMINAL LINEAR DIMENSIONS		THREADS TO BS3643 1981 METRIC COURSE.		FINISH: SEE DRAWING		CUSTOMER: REVERIE	
					SURFACE FINISHES:		BSP THREADS TO BS 2779 MED FIT		SCALE: DO NOT SCALE		MATERIAL: C/FIBRE/GRP	
					ANG DIMS +/- 0.5°		THIS A DRAWING IS A PRIVATE AND CONFIDENTIAL COMMUNICATION		WEIGHT: -		INSPECTION GRADE: A-1 PART QUALITY: B	
											DRG. NO.: N/A	



1:1 100% SCALE