

NOTES:

•

MADE FROM R01SB0493T

•

MIRRORED VERSION TO BE CREATED USING SAME TOOL

•

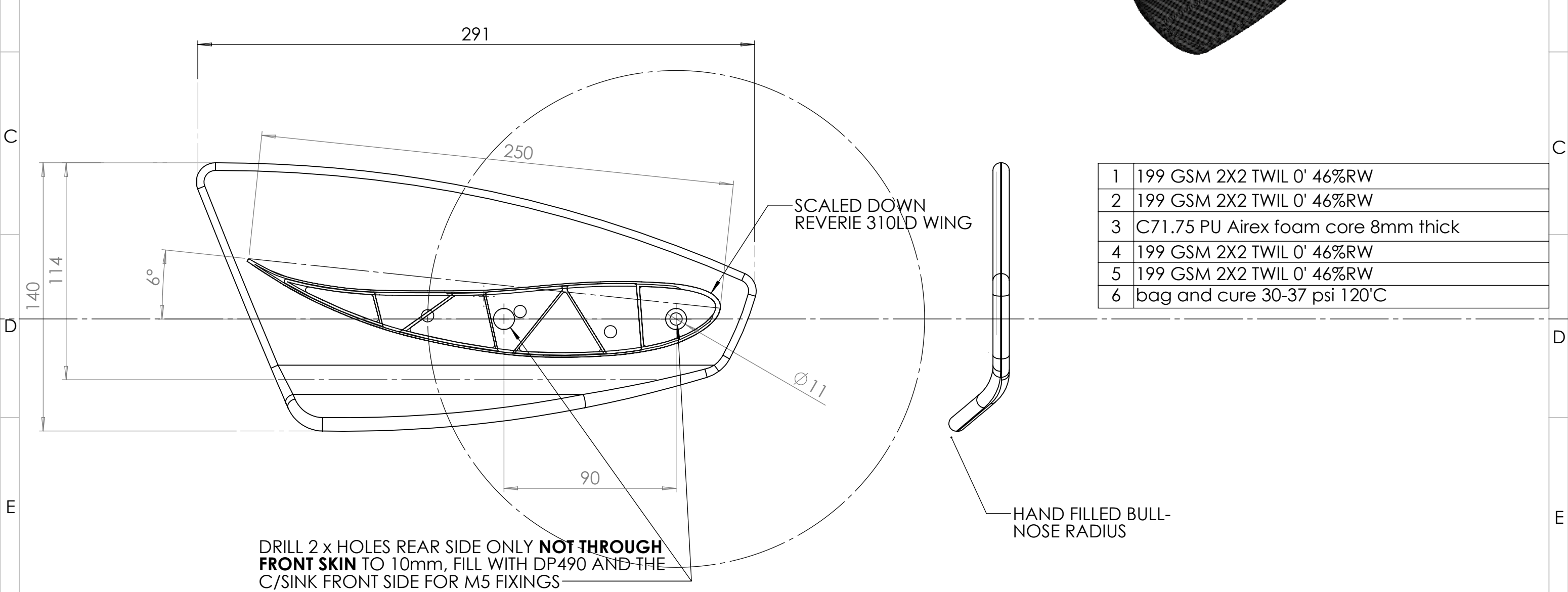
OUTER PROFILE NOT CRITICAL

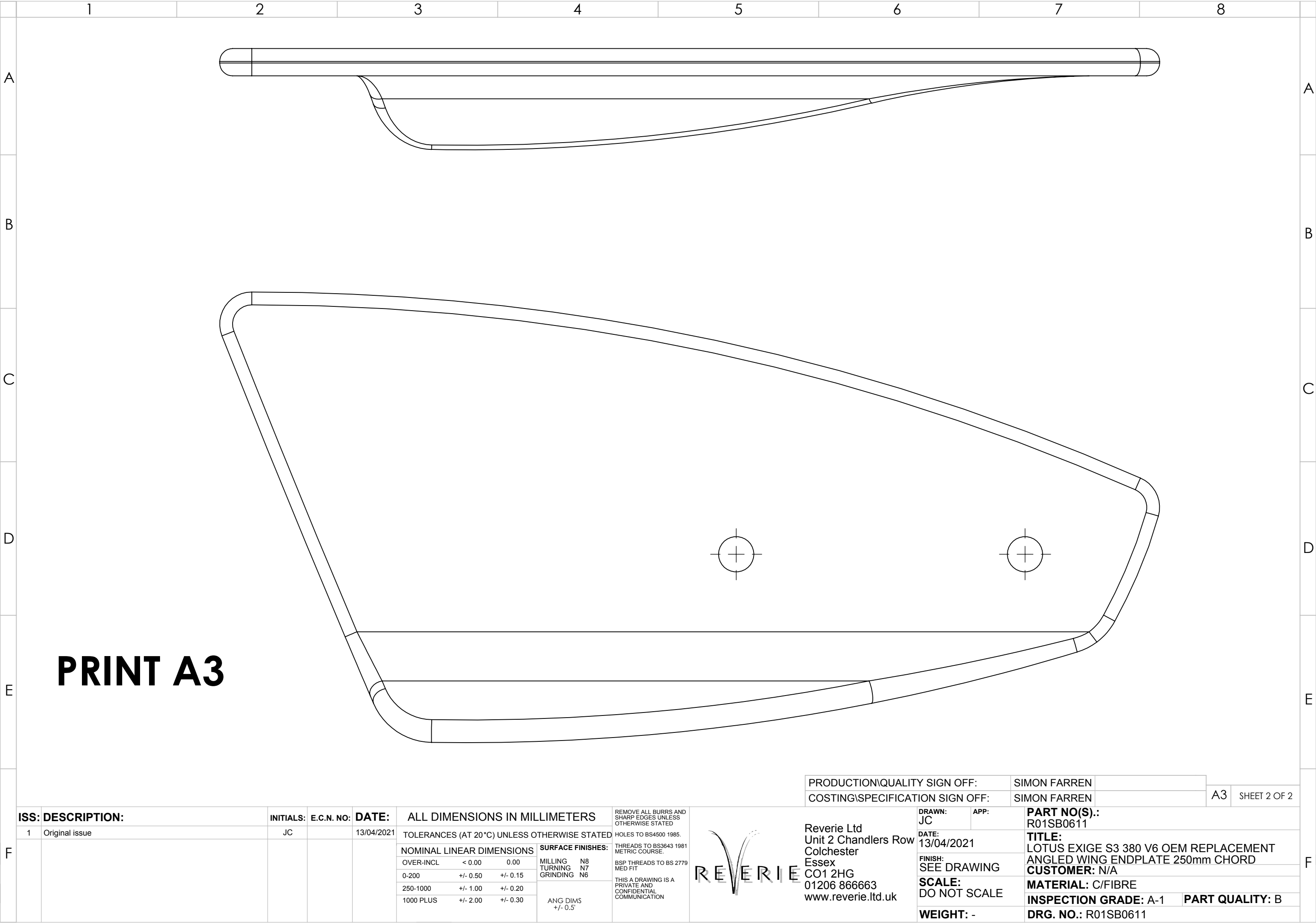
•

1:1 SCALE SHEET 2


A

A





PRINT A3

ISS: DESCRIPTION:		INITIALS:	E.C.N. NO:	DATE:	ALL DIMENSIONS IN MILLIMETERS			REMOVE ALL BURRS AND SHARP EDGES UNLESS OTHERWISE STATED		<div><div>Reverie Ltd Unit 2 Chandlers Row Colchester Essex CO1 2HG 01206 866663 www.reverie.ltd.uk</div></div>		DRAWN: JC	APP:	PART NO(S): R01SB0611	
1	Original issue	JC		13/04/2021	TOLERANCES (AT 20°C) UNLESS OTHERWISE STATED			HOLES TO BS4500 1985.				DATE: 13/04/2021	TITLE: LOTUS EXIGE S3 380 V6 OEM REPLACEMENT ANGLED WING ENDPLATE 250mm CHORD		
					NOMINAL LINEAR DIMENSIONS		SURFACE FINISHES:		THREADS TO BS3643 1981 METRIC COURSE.			FINISH: SEE DRAWING	CUSTOMER: N/A		
					OVER-INCL	< 0.00	0.00	MILLING N8 TURNING N7 GRINDING N6	BSP THREADS TO BS 2779 MED FIT				MATERIAL: C/FIBRE		
					0-200	+/- 0.50	+/- 0.15	ANG DIMS +/- 0.5°	THIS A DRAWING IS A PRIVATE AND CONFIDENTIAL COMMUNICATION				INSPECTION GRADE: A-1		
					250-1000	+/- 1.00	+/- 0.20		PART QUALITY: B						
					1000 PLUS	+/- 2.00	+/- 0.30			WEIGHT: -	DRG. NO.: R01SB0611				