

A

B

C

D

E

F

A

B

C

D

E

F

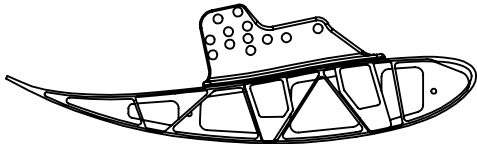
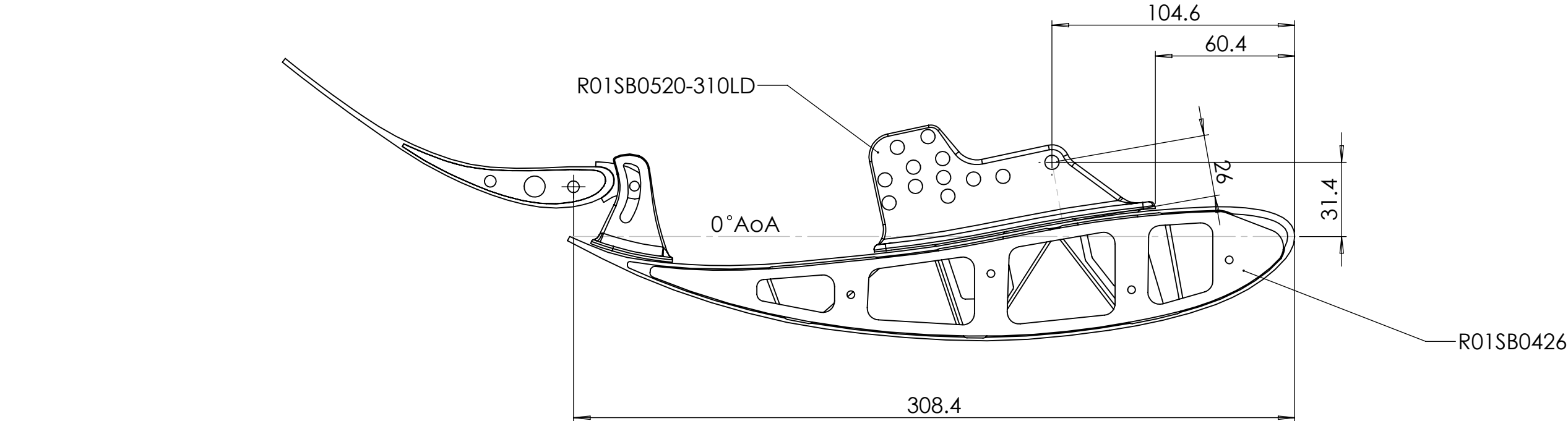
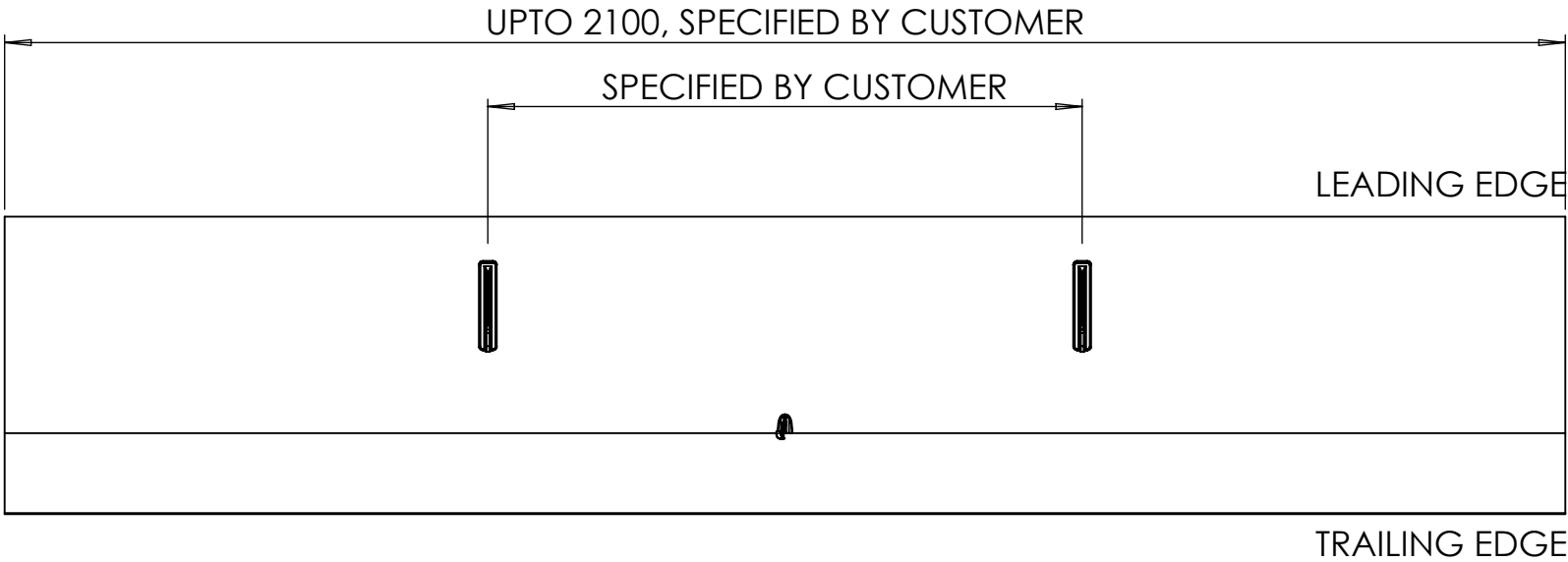


DIAGRAM SHOWING WING WEBS AND TOP MOUNT POSITION



PRODUCTION\QUALITY SIGN OFF:	SIMON FARREN
COSTING\SPECIFICATION SIGN OFF:	SIMON FARREN

A3 SHEET 1 OF 2

ISS: DESCRIPTION:

INITIALS: E.C.N. NO: DATE:

ALL DIMENSIONS IN MILLIMETERS

REMOVE ALL BURRS AND SHARP EDGES UNLESS OTHERWISE STATED

Holes to BS4500 1985.

THREADS TO BS3643 1981 METRIC COURSE.

BSP THREADS TO BS 2779 MED FIT

THIS A DRAWING IS A PRIVATE AND CONFIDENTIAL COMMUNICATION

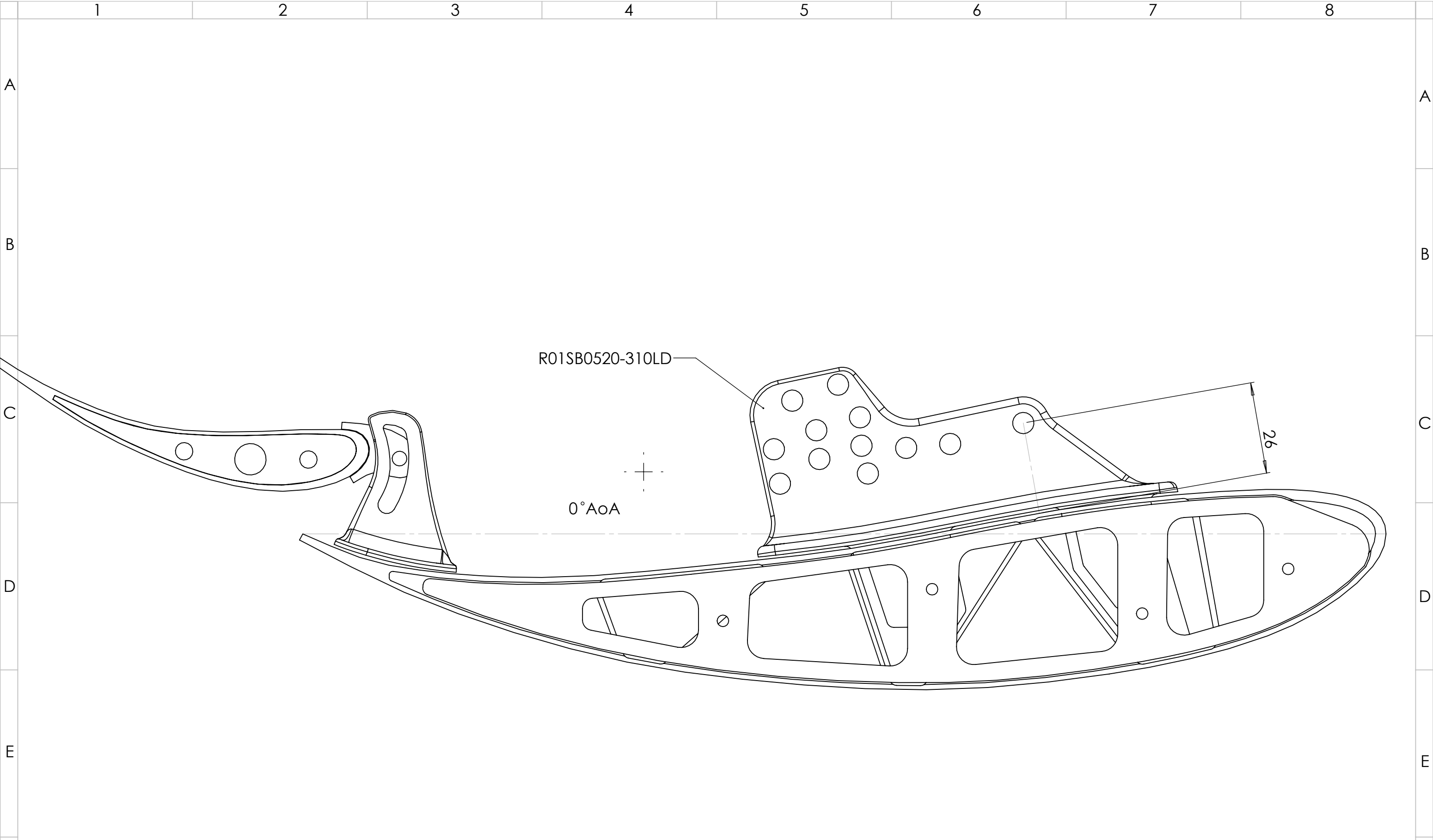



Reverie Ltd
Unit 2 Chancellors Row
Colchester
Essex
CO1 2HG
01206 866663
www.reverie.ltd.uk

DRAWN: JC
DATE: 10/07/2018
FINISH: SEE DRAWING
SCALE: DO NOT SCALE
WEIGHT: -

APP:

PART NO(S): R01SB0528
TITLE: 310LD + 150mm DUAL ELEMENT TOP MOUNTED STRAIGHT CARBON WING KIT
CUSTOMER: N/A
MATERIAL: N/A
INSPECTION GRADE: A-1 PART QUALITY: B
DRG. NO.: R01SB0528



										PRODUCTION\QUALITY SIGN OFF:		SIMON FARREN							
										COSTING\SPECIFICATION SIGN OFF:		SIMON FARREN				A3	SHEET 2 OF 2		
F	ISS:	DESCRIPTION:	INITIALS:	E.C.N. NO:	DATE:	ALL DIMENSIONS IN MILLIMETERS			REMOVE ALL BURRS AND SHARP EDGES UNLESS OTHERWISE STATED		Reverie Ltd Unit 2 Chandlers Row Colchester Essex CO1 2HG 01206 866663 www.reverie.ltd.uk	DRAWN:	APP:	PART NO(S):					
	1	Original issue	JC		10/07/2018	TOLERANCES (AT 20°C) UNLESS OTHERWISE STATED			HOLES TO BS4500 1985.			JC		R01SB0528					
												DATE:			TITLE: 310LD + 150mm DUAL ELEMENT TOP MOUNTED STRAIGHT CARBON WING KIT				
												FINISH:			CUSTOMER: N/A				
												SCALE:			MATERIAL: N/A				
												DO NOT SCALE			INSPECTION GRADE: A-1			PART QUALITY: B	
												WEIGHT: -			DRG. NO.: R01SB0528				