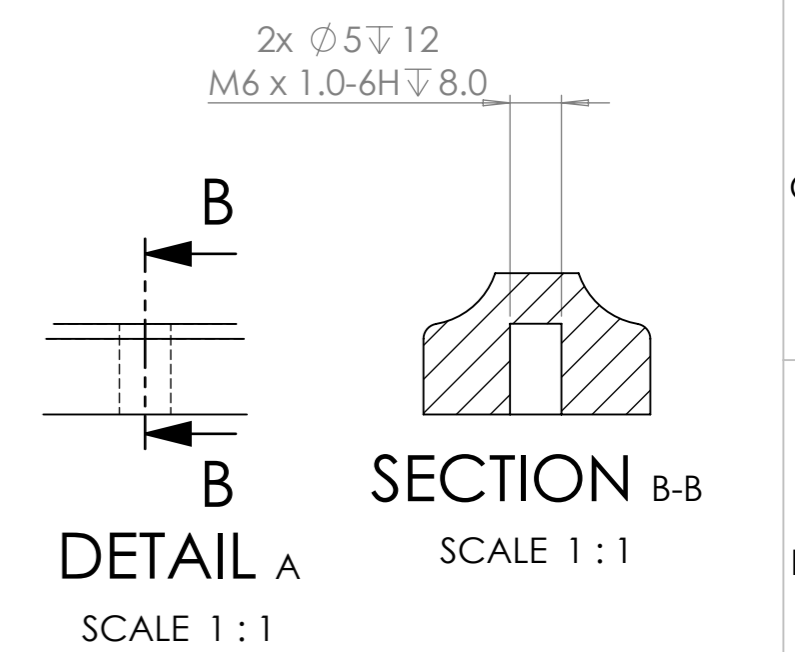


TAG	X LOC	Y LOC	SIZE
A1	167.38	161.69	Ø 6.20 THRU
A2	246.52	171.27	Ø 6.20 THRU
A3	246.78	154.60	Ø 6.20 THRU
A4	247.09	162.94	Ø 6.20 THRU
A5	255.12	174.65	Ø 6.20 THRU
A6	255.89	156.13	Ø 6.20 THRU
A7	255.99	165.41	Ø 6.20 THRU
A8	263.56	178.65	Ø 6.20 THRU
A9	264.81	168.50	Ø 6.20 THRU
A10	264.98	158.28	Ø 6.20 THRU



FINISH: DEFLASH AND CNC  
 MACHINE ALL HOLES  
 AND UNDERSIDE FOOT  
 AND POWDER COAT BLACK  
 (NON HANDED, LEFT AND RIGHT THE SAME)

Production\Quality Sign off: Simon Farren

Costing\Specification Sign off: Simon Farren

A3 SHEET 1 OF 1

ISSUE	DESCRIPTION	INITIALS	E.C.N. No	DATE
1	ORIGINAL ISSUE	JC		12/10/2017

ALL DIMENSIONS IN MILLIMETERS		
TOLERANCES (AT 20C) UNLESS OTHERWISE STATED		
NOMINAL LINEAR DIMENSIONS		
OVER-INCL	<0.00	0.00
0-200	+/- 0.50	+/- 0.15
250-1000	+/- 1.00	+/- 0.20
1000 PLUS	+/- 2.00	+/- 0.30

REMOVE ALL BURRS  
 AND SHARP EDGES  
 UNLESS OTHERWISE STATED

HOLES TO BS4500 1985.  
 THREADS TO BS3643 1981  
 METRIC COURSE.

BSP THREADS TO BS 2779  
 MED FIT

THIS A DRAWING IS A  
 PRIVATE AND CONFIDENTIAL  
 COMMUNICATION

**REVERIE**

Reverie Limited  
 Unit 2 Chandlers Row  
 Colchester  
 Essex  
 CO1 2HG  
 01206 866663  
 www.reverie.ltd.uk

DRAWN  
 JC

DATE  
 12/10/2017

FINISH  
 SEE SHEET

SCALE  
 Do Not Scale Drawing

MASS

PART NUMBER  
 R01SB0508

TITLE  
 Universal Swept Wing Mounts

MATERIAL  
 LM25

INSPECTION LEVEL  
 A-1

PART QUALITY GRADE  
 B

DRG. No.  
 R01SB0508-T