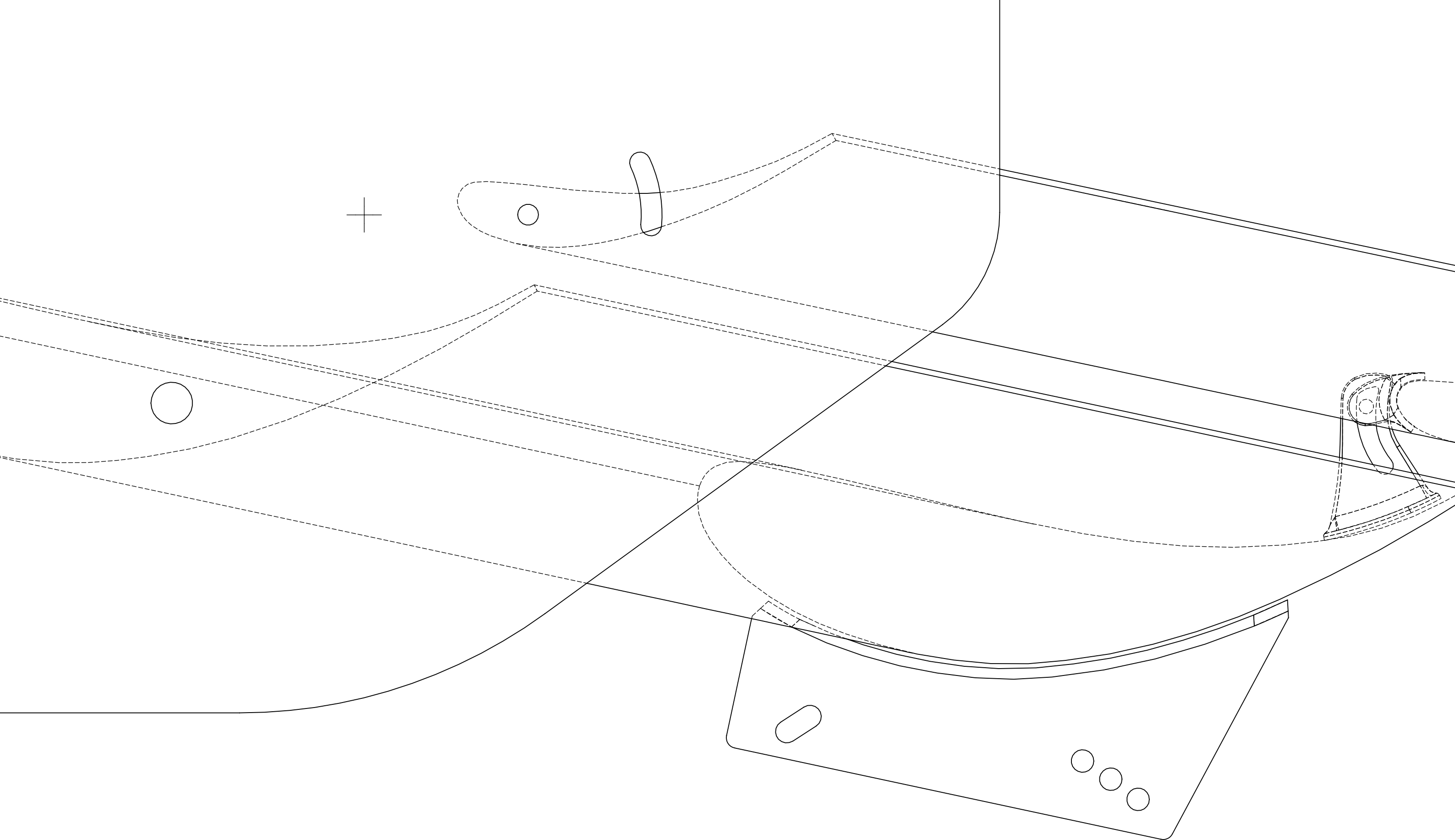


										PRODUCTION\QUALITY SIGN OFF:		SIMON FARREN														
										COSTING\SPECIFICATION SIGN OFF:		SIMON FARREN				A3		SHEET 1 OF 2								
F	ISS: DESCRIPTION:		INITIALS:	E.C.N. NO:	DATE:	ALL DIMENSIONS IN MILLIMETERS			REMOVE ALL BURRS AND SHARP EDGES UNLESS OTHERWISE STATED		<div>REVERIE</div> <div>Reverie Ltd Unit 2 Chandlers Row Colchester Essex CO1 2HG 01206 866663 www.reverie.ltd.uk</div>		DRAWN:	APP:	PART NO(S):											
	1		Original issue		JC				26/09/2019				TOLERANCES (AT 20°C) UNLESS OTHERWISE STATED			HOLES TO BS4500 1985.		DATE:		26/09/2019		TITLE: 225mm + 110mm DUAL ELEMENT CURVED CARBON WING KIT				
													NOMINAL LINEAR DIMENSIONS			SURFACE FINISHES:										
													OVER-INCL			< 0.00		0.00								
													0-200			+/- 0.50		+/- 0.15								
													250-1000			+/- 1.00		+/- 0.20								
													1000 PLUS			+/- 2.00		+/- 0.30								
												ANG DIMS +/- 0.5														
												THIS A DRAWING IS A PRIVATE AND CONFIDENTIAL COMMUNICATION														



PART NO(S):
R01SB0208

REVERIE