
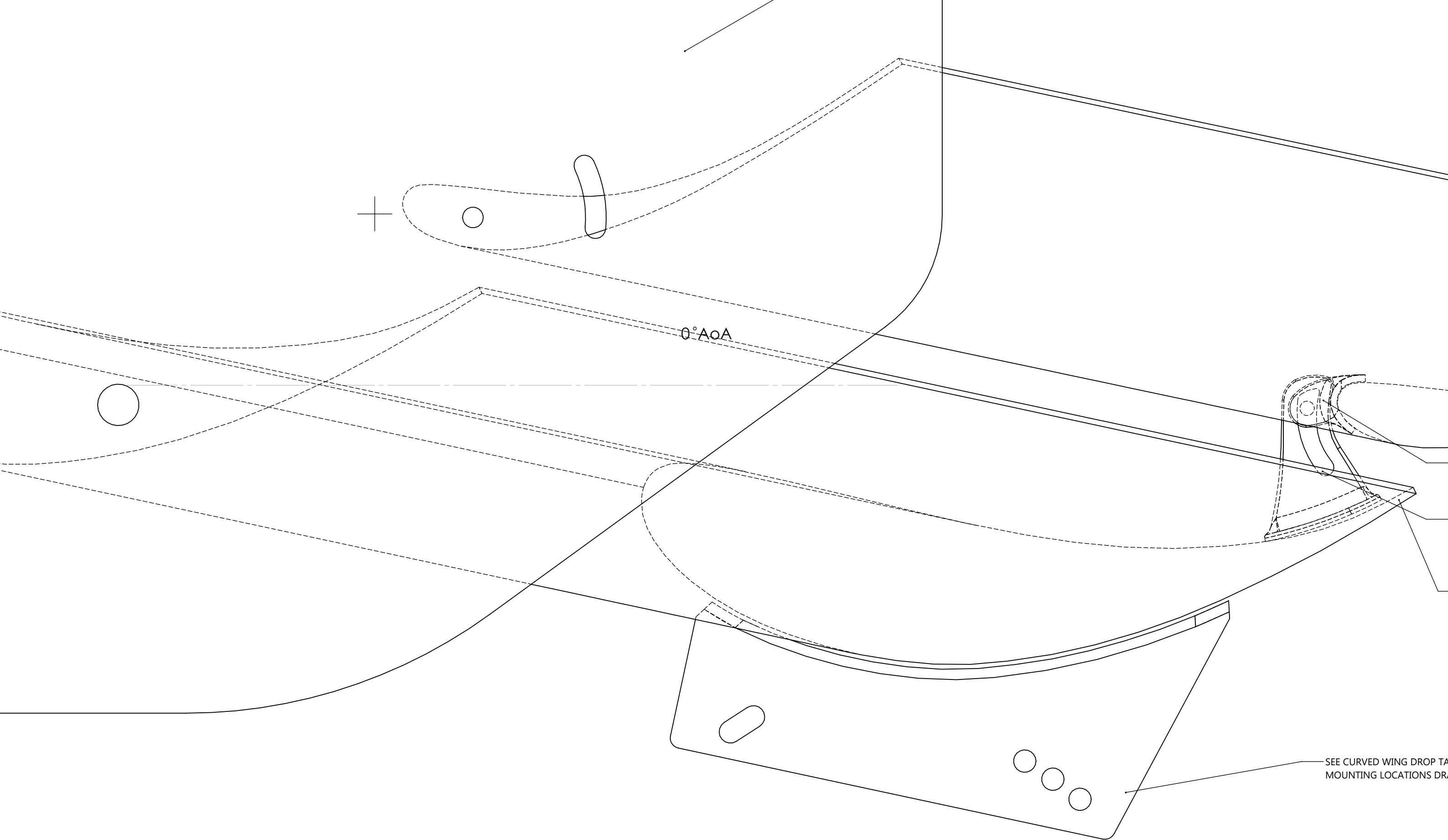


										PRODUCTION\QUALITY SIGN OFF:		SIMON FARREN						
										COSTING\SPECIFICATION SIGN OFF:		SIMON FARREN				A3	SHEET 1 OF 2	
F	ISS: DESCRIPTION:		INITIALS:	E.C.N. NO:	DATE:	ALL DIMENSIONS IN MILLIMETERS			REMOVE ALL BURRS AND SHARP EDGES UNLESS OTHERWISE STATED				DRAWN: JC		APP:	PART NO(S): R01SB0208		
	1	Original issue	JC		26/09/2019	TOLERANCES (AT 20°C) UNLESS OTHERWISE STATED			HOLES TO BS4500 1985.				DATE: 26/09/2019		TITLE: 225mm + 150mm DUAL ELEMENT CURVED CARBON WING KIT			
										THREADS TO BS3643 1981 METRIC COURSE.								
										BSP THREADS TO BS 2779 MED FIT								
										THIS A DRAWING IS A PRIVATE AND CONFIDENTIAL COMMUNICATION								



PART NO(S):
R01SB0208

REVERIE