

## **Porsche 911 991 GT3/GT3RS Splitter Fitting Guide**

R01SB0489



### ***Introduction***

Carbon Fibre front splitter to fit Porsche 911 991 GT3/GT3RS. Available polished or clear coated.

### ***Kit Contents***

- Carbon Fibre splitter
- M6 x 35mm S/Steel C/Sunk bolts (qty. 24)
- M6 x 40mm S/Steel C/Sunk bolts (qty. 6)
- M6 Nyloc nut (qty. 30)
- M6 x 40mm penny washers (Qty. 30)
- Top-hat insert for C/sunk bolts (Qty. 30)

### ***Tools Required***

No specialist tools or equipment are required to fit splitter kit.

### **PORSCHE DISCLAIMER**

*Although ReVerie Limited supply parts for use with/on vehicles manufactured by Porsche, ReVerie Limited is in no way connected to Porsche or any other affiliation and is entirely independent of Porsche. Accordingly, none of the products offered for sale or supplied by ReVerie Limited (nor any advice or service offered or provided by ReVerie Limited) are in any way endorsed by Porsche and has not tested or approved any such products or services. Accordingly, Porsche shall not under any circumstances be liable for any loss, claim, damages or any consequential, indirect or special damages whatsoever arising out of or in connection with the use of products sold or supplied by ReVerie.*

## Instructions

Please read fully before starting installation.



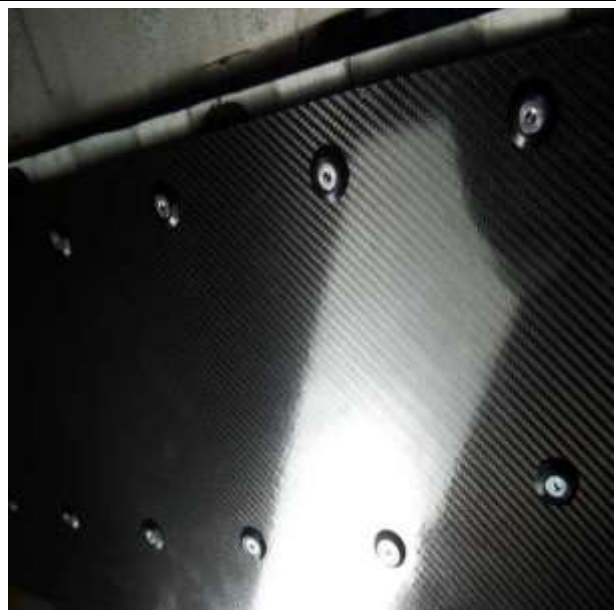
Check that all components are present.

Place the Revere splitter in position and check that all holes line up

Bolt up the 6 x bolt holes circled with 6 x M6 x 40mm C/sunk bolts, 6 x top hat inserts and 6 x penny washers

Bolt up the remaining holes with 24 x M6 x 35mm C/sunk bolts, penny washers and top-hat inserts

See images on following pages;







Optional support stays available when fitted with Reverie bumper canards.