

## MULSANNE C / B LATERAL HEAD RESTRAINT FITMENT GUIDE

### R01SI0043

**A.**



PLACE THE HEAD RESTRAINT FRONT HALF ON TO YOUR EXISTING MULSANNE C / B SEAT

**B.**



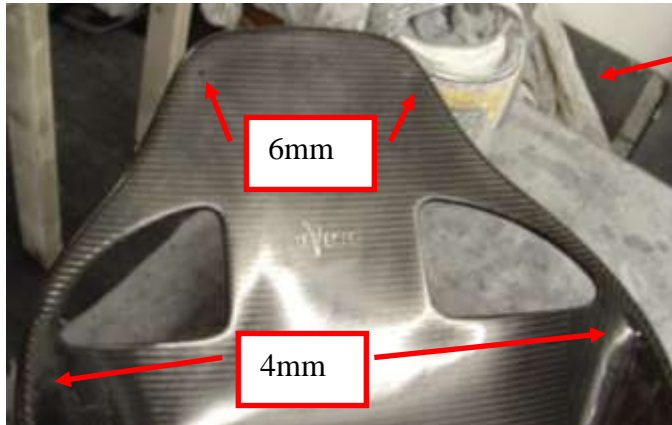
THE HARNESS HOLE'S ON THE SEAT AND HEAD RESTRAINT FRONT HALF INTERLOCK, GIVING POSITIVE LOCATION.

**C.**



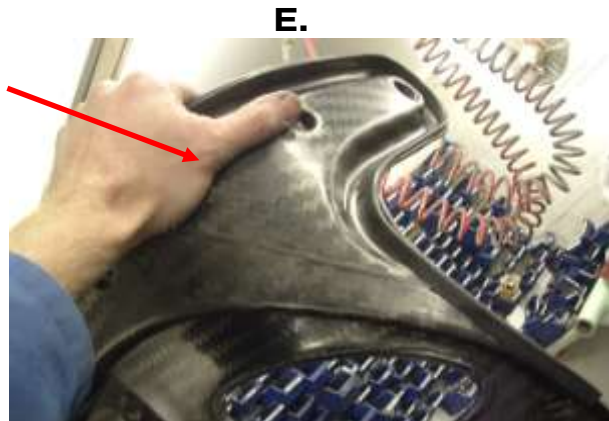
WITH A MARKER PEN (A WHITE PAINT PEN IS IDEAL) MARK THROUGH THE FOUR HOLE'S INDICATED ON TO THE SEAT. REMOVE THE HEAD RESTRAINT FRONT AND PILOT DRILL WITH A 3mm DRILL BIT THROUGH THE SEAT WHERE MARKED.

**D.**

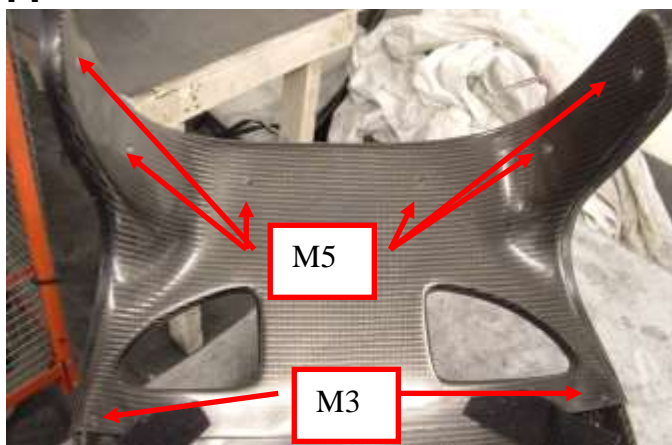


THE PILOTED HOLES SHOULD NOW BE OPENED UP TO THE INDICATED DIMENSIONS

PLACE THE FRONT HALF OF THE HEAD RESTRAINT BACK ON TO THE SEAT FOLLOWED BY THE BACK HALF, THE HOLES IN THE HEAD RESTRAINT HALVES AND SEAT SHOULD ALL LINE UP.



**F.**



YOU CAN NOW BOLT THE HEAD RESTRAINT HALVES TO THE SEAT WITH THE FASTENERS PROVIDED

