

Evora Std & Sport Diffuser Fitting Guide

R01SB0359, R01SB0360

Introduction

This range of carbon diffusers is designed to be a direct bolt on replacement for the standard alloy items. They are extended rearwards and the vanes downwards to try and offer improved down force and of course provides the additional cosmetic lustre of being high quality pre-preg carbon.

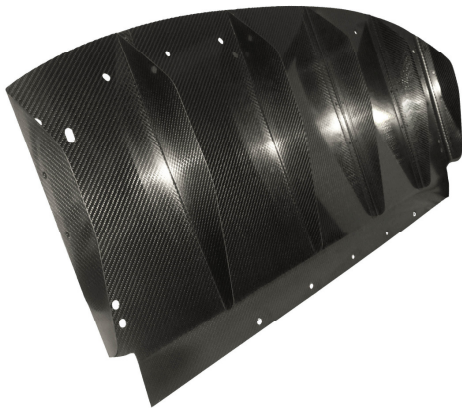
Available Diffusers

Lotus Evora Carbon Fibre Rear Diffuser, STD 5 Element

R01SB0359

Lotus Evora Sport Pack and S Rear Diffuser, with lower centre exhaust section (3 Element).

R01SB0360



STD Evora Carbon Diffuser



Evora S Carbon Diffuser

Use OEM Fixings and side rear brackets

WARNING, MOTORSPORT OR DRIVING CAN BE DANGEROUS RESULTING IN DEATH OR PERSONAL INJURY.

READ OUR FITTING INSTRUCTIONS CAREFULLY

This article is sold without warranty expressed or implied. No warranty or representation is made as to this product's ability to protect the user from injury or death. The user assumes that risk. The effectiveness, warranty and longevity of this equipment are directly related to the manner in which it is INSTALLED, USED, and/or MAINTAINED. THE USER ASSUMES THE RISK.

Fitment of REVERIE PRODUCTS TO AUTOMOBILES THAT ARE SUBJECT TO A MANUFACTURER'S WARRANTY MAY VOID THE MANUFACTURER'S WARRANTY AND THE VEHICLES ABILITY TO MEET EMISSION OR OTHER TRANSPORT REGULATIONS.

By purchasing this product and opening the packaging, purchasers expressly acknowledge, understand and agree that they take, select and purchase these REVERIE products from REVERIE, its affiliates, distributors, and agents (collectively, REVERIE) "as is" and "with all faults".

The entire risk as to the quality and performance of these REVERIE parts is with the purchasers. Should the goods prove defective following their purchase; the purchasers assume the entire cost for all necessary servicing or repair or any resulting liability. Working on your car can be a dangerous activity. If you are unsure of what you are doing, please leave mechanical or Safety critical work to a skilled mechanic.

We take no responsibility for the incorrect use and / or installation of REVERIE products.

WWW.REVERIE.LTD.UK

LOTUS DISCLAIMER

Although ReVerie Limited supply parts for use with/on vehicles manufactured by Lotus Cars Limited, ReVerie Limited is in no way connected to Lotus Cars Limited or any other member of the Lotus Group of companies ("Lotus") and is entirely independent of Lotus. Accordingly, none of the products offered for sale or supplied by ReVerie Limited (nor any advice or service offered or provided by ReVerie Limited) are in any way endorsed by Lotus and Lotus has not tested or approved any such products or services. Accordingly, Lotus shall not under any circumstances be liable for any loss, claim, damages or any consequential, indirect or special damages whatsoever arising out of or in connection with the use of products sold or supplied by ReVerie."

Tools and Materials Required

No specialist tools or equipment are required to fit this diffuser.
Ratchet, 10mm socket, 4mm allen key, 5mm allen key, torque wrench.

UV-Protection / Deterioration of properties

Please Note Epoxy Pre-preg Carbon and Glass or Aramid products are not UV stable. Texallium products are particularly bad and can yellow in 2-6 weeks. The epoxy resin will 'yellow' with prolonged exposure to UV radiation and material strength properties will slowly determinate. We recommend exterior products or those exposed to constant UV, are either colour painted or at least lacquered. We use predominately 2K car lacquers of medium solids, the DBS range has been found very suitable, although people have had equally good results with Urethanes varnishes and epoxy clear coats.

The surface should be sanded with 180, 240 then 320 grit and a cleaning solvent used to remove grease or dirt prior to paint application. Several coats may be required (normally 3 to 4 light coats) to avoid pin holing, common with painting composite products. Pinholes may be dubbed in carefully with a brush, and then wet flatted for a final application of 3 thin coats. **Let air dry only**, you may stove the paint at 70°c once fully air-dried.

Instructions

Fitting is so simple on all, we have shown Evora S variant only.
Please read fully before starting installation.

	<p>1. View of standard Evora S diffuser</p>
	<p>2. Un-bolt all bolts around rear perimeter and side flanks. Un-bolt 5 bolts at front joint to centre floor unbolt two Allen headed bolts that go into the rear sub frame. Drop diffuser, remove 5 * M5 deep threaded U-nuts from front edge and slip them onto carbon part.</p>
	<p>3. Fit carbon diffuser in place and replace and tighten all fixings</p>