

Hayabusa Airbox Fitting Guide

R01SE0245, R01SE0246, R01SE0392, R01SE0393, R01SE0394

Introduction

This airbox is designed to fit a Hiyabusa engine in a westfield, although this set-up seems to fit most other vehicle configurations. The kit is supplied with a drilled back plate to push over the rubber hiyabusa trumpets and lock into the offset grommet section. The air boxes are available in Carbon Fibre or Glass Fibre pre-preg.

The air boxes can be further trimmed down if required to suit other vehicles with lower bonnet lines. However we recommend a minimum height of airbox wall being 25mm above trumpet entry. Please ensure that there is sufficient space to package your chosen airbox before cutting, drilling or altering the airbox in any other way as ReVerie cannot exchange or refund modified parts. These air boxes are only suitable for naturally aspirated engines, turbo engined versions may be available upon request.

ReVerie Additional Parts available

The kit is supplied with just Hockenheim 422 box, suzuka, suzuka end cap and filter with extension moulding. This will give a very useful noise reduction but offers no cold ram air facility. Cold ram air can easily be piped into the suzuka filter canister via the following items, details of which can be found on www.reverie.ltd.uk

Diffuser Ducts – flat stepped 58/75/100mm, taper stepped 58/75/100mm , 3 way 58mm, 2 way 58mm, 2 way straight 75, 58mm

Trunking – 58mm, 75mm, 100mm

Intake scoops – Mondello 75, Mondello 100, naca 58mm, 75mm, 100mm, gurston, goodwood scoops

Tools and Materials Required

No specialist tools or equipment are required to fit a this airbox to a hiyabusa installation in a Westfield. However if trimming is required for other applications then the following tools are advised;

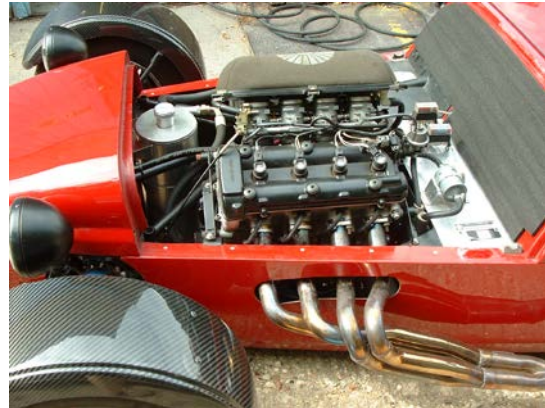
- Hole Saw or Dremel with grit/diamond tip cutter (to cut choke holes/snorkel entries)
- Rotary Sander (for careful enlargement of choke holes)

To make installation easier, having the following materials to hand is advisable:

- Sheet of Paper (large enough to cover the backplate)
- Spray Mount Adhesive
- Grease or Vaseline
- A good quality epoxy adhesive (we recommend Scotchweld DP490 available from the ReVerie Online Store or by mail order)
- Thread Sealant (such as Loctite Threadlock)
- Air Filter Oil

Instructions

Please read fully before starting installation.



1. Remove existing airbox/air filter from the engine, having first removed air temperature sensor and breather pipe.



2. Remove rubber trumpets



3. Push rubber trumpets through new composite Hockenheim flat back plate.



3. Fit composite back plate with trumpets to throttle bodies. Note offset nature of back plate trumpet grommet section allows back plate to be offset if required by turning trumpets in back plate. Refit temperature sensor and oil breather.



4. You are now ready to screw the air box in place. Use the bolts supplied, if we have supplied the airbox with aircraft anchor nuts these are self locking. These fixings have a 2.5mm rivet either side to secure them in place. If we have supplied the airbox with clip over deep threaded u-nut fixings then you must use a thread lock to ensure the bolts do not come loose. Push the airfilter with extension moulding into end of suzuka tube and secure with single hose clip supplied.

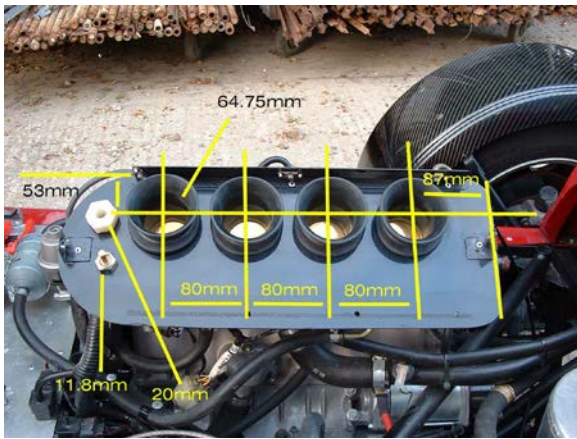


5. If the airbox requires further trimming for packaging purposes on other vehicles, the cleanest cut is achieved by the use of a diamond or carbide cutting disc tool with a high rotational speed (such as a Dremel). It is best to take a rough cut first and then double check measurements before making a final precision cut.

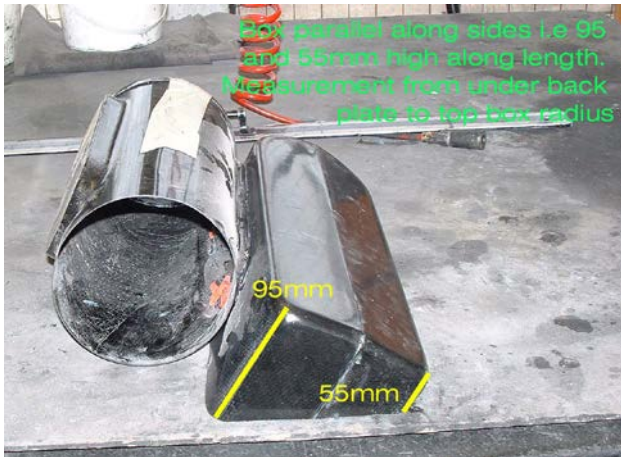


6. If cold ram air is required then at optional expense a flat or stepped diffuser cone, trunking and an alloy intake bell mouth or scoop can be fitted. See www.reverie.ltd.uk for details.

Notes:



Shot of hiyabusa backplate showing 64.75mm trumpet holes on 80mm centres.



Notes:

Shot of Hockenheim 422 hiyabusa box showing default Westfield trimming and position of suzuka canister.

For instructions on the fitting of a remote filter, filter canister or intake scoop please read the appropriate instructions, all available from ReVerie. It should be noted that for best performance induction air should be picked up from an area with good airflow and where the air is as close to ambient temperature as possible.