

Exige V6 S3 Race Canards Fitting Guide

R01SB0464

Introduction

These front canards can be fitted just below the headlamps again to further tune the aero balance of the car. They can be used alone or with the lower smaller road canards from Reverie or Lotus motorsport oem.

Parts Available:

[R01SB0464](#) Exige V6 S3 race canards



LOTUS DISCLAIMER

Although ReVerie Limited supply parts for use with/on vehicles manufactured by Lotus Cars Limited, ReVerie Limited is in no way connected to Lotus Cars Limited or any other member of the Lotus Group of companies ("Lotus") and is entirely independent of Lotus. Accordingly, none of the products offered for sale or supplied by ReVerie Limited (nor any advice or service offered or provided by ReVerie Limited) are in any way endorsed by Lotus and Lotus has not tested or approved any such products or services. Accordingly, Lotus shall not under any circumstances be liable for any loss, claim, damages or any consequential, indirect or special damages whatsoever arising out of or in connection with the use of products sold or supplied by ReVerie.

Tools Required

Screw drivers

Drill and metric drill bits set 3-10mm

Metric allen key set

Small 1/4" drive socket set

Metric spanner set

Torque wrench, locking wheel nut key and wheel nut socket

Parts supplied

16* M5 10mm dia s/steel washers

8 * M5 but head s/steel bolts * 20mm

8 * M5 s/steel nyloc nuts



1. Handbrake on, Loosen front wheel nuts using locking wheel nut tool and torque wrench etc.

Jack up the car carefully as per lotus handbook instructions and support on four axle stands safely. Caution vehicle very rear weight heavy.

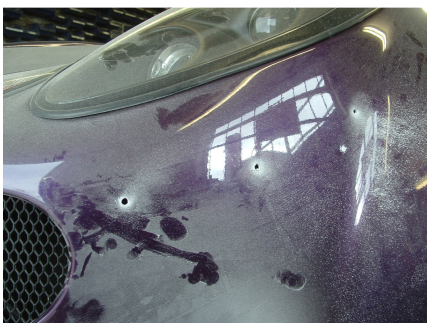
We find it is better to jack up with a low jack and 40mm spacer under the rear wishbones, then support the rear wheels with steel ramps under the tyres.



2. Remove front plastic arch liners so you can drill and fit the nuts and bolts supplied to secure the canards beneath the headlamps



3. Arch liner shown removed



4. Offer front canards in position and drill four 5.5mm fixing holes each side.



5. Bolt canards in position with 4 off M5 bolts and washers supplied. Refit inner arches and wheels and lower vehicle to ground carefully.

Check and torque wheel bolts as per lotus owner's manual.

WARNING, MOTORSPORT OR DRIVING CAN BE DANGEROUS RESULTING IN DEATH OR PERSONAL INJURY.

READ OUR FITTING INSTRUCTIONS CAREFULLY

This article is sold without warranty expressed or implied. No warranty or representation is made as to this product's ability to protect the user from injury or death. The user assumes that risk. The effectiveness, warranty and longevity of this equipment are directly related to the manner in which it is INSTALLED, USED, and/or MAINTAINED. THE USER ASSUMES THE RISK.

FITMENT OF REVERIE PRODUCTS TO AUTOMOBILES THAT ARE SUBJECT TO A MANUFACTURER'S WARRANTY MAY VOID THE MANUFACTURER'S WARRANTY AND THE VEHICLES ABILITY TO MEET EMISSION OR OTHER TRANSPORT REGULATIONS.

By purchasing this product and opening the packaging, purchasers expressly acknowledge, understand and agree that they take, select and purchase these REVERIE products from REVERIE, its affiliates, distributors, and agents (collectively, REVERIE) "as is" and "with all faults".

The entire risk as to the quality and performance of these REVERIE parts is with the purchasers. Should the goods prove defective following their purchase; the purchasers assume the entire cost for all necessary servicing or repair or any resulting liability. Working on your car can be a dangerous activity. If you are unsure of what you are doing, please leave mechanical or Safety critical work to a skilled mechanic.

We take no responsibility for the incorrect use and / or installation of REVERIE products.

WWW.REVERIE.LTD.UK

UV-PROTECTION

Please Note Epoxy Pre-preg products are not UV stable. Texallium products are particularly liable and can yellow in only 2 – 6 weeks.

The epoxy resin will 'yellow' with prolonged exposure to UV radiation and material strength properties will slowly deteriorate. We recommend exterior products or those exposed to constant UV are either regularly treated with UV polish or screens such as Armour-all or 606 protectant or colour painted or at least Lacquered. We use predominately 2K car lacquers of medium solids, the DBS range has been found very suitable, although people have had equally good results with Urethanes varnishes and epoxy clear coats.

The surface should be sanded with 180, 240 then 320 grit and a cleaning solvent used to remove grease or dirt prior to paint application. Several coats may be required (normally 3 to 4 light coats) to avoid pin-holing, common with painting composite products. Pin holes may be dubbed in carefully with a brush, then wet flatted for a final application of 3 thin coats. **Let air dry only**, you may stove the paint at 70°C once fully air dried.