

## 2010 Exige S2 Front Spoiler

### R01SB0374

#### ***Introduction***

The spoiler has been designed to provide increased aerodynamic down force on the front of the 2010 Exige S2 to balance the effect of fitting a reverie rear diffuser and 225mm chord adjustable full width rear wing. It should allow a good aero balance to be achieved

Also we produce front canards that can be fitted just below the headlamps again to further tune the aero balance of the car.



#### **LOTUS DISCLAIMER**

Although ReVerie Limited supply parts for use with/on vehicles manufactured by Lotus Cars Limited, ReVerie Limited is in no way connected to Lotus Cars Limited or any other member of the Lotus Group of companies ("Lotus") and is entirely independent of Lotus. Accordingly, none of the products offered for sale or supplied by ReVerie Limited (nor any advice or service offered or provided by ReVerie Limited) are in any way endorsed by Lotus and Lotus has not tested or approved any such products or services. Accordingly, Lotus shall not under any circumstances be liable for any loss, claim, damages or any consequential, indirect or special damages whatsoever arising out of or in connection with the use of products sold or supplied by ReVerie.

#### ***Tools Required***

Metric spanner set

Metric socket set

Metric Ball end allen key set

Drill and drill bits

Rivsert Gun

Jack, Axle stands, wheel wrench

#### **Parts supplied**

3\* M5 S/Steel C/Sunk bolt \* 20mm

3\* M6 S/Steel C/Sunk bolt \* 20mm

1\* M5 S/Steel C/Sunk bolt \* 30mm

3\* M5 rivsert nut inserts

1 \* M5 white nylon 13mm deep spacer to space centre bolt of spoiler to bodywork

6\* 50mm diameter self adhesive round black stickers to go over bolt holes on underside

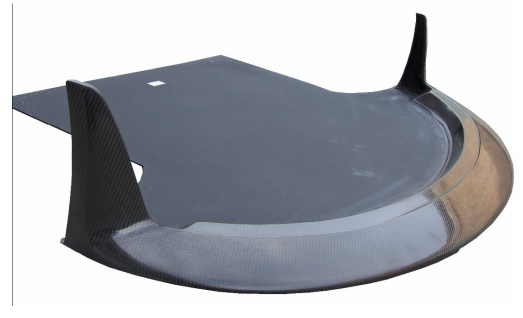
7\* M6 C/Sunk washers, black anodised



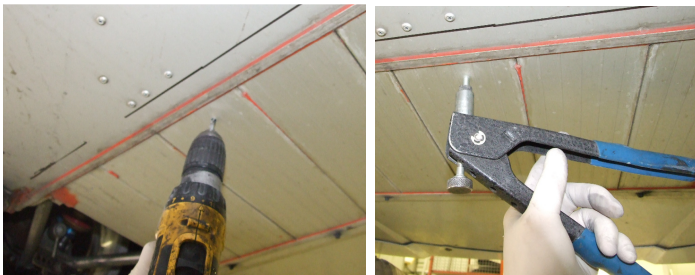
1. Jack up the front of the car carefully as per lotus handbook instructions and support on two axle stands safely. You may not need to remove the front wheels.



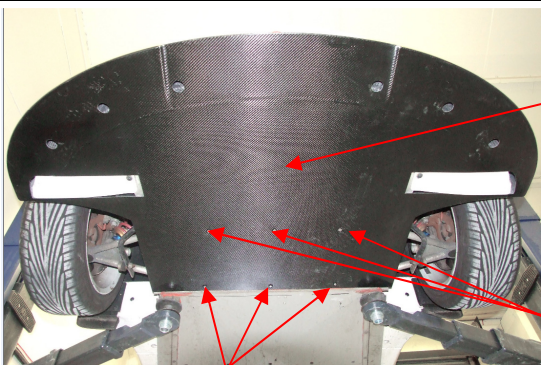
2. Remove standard front spoiler and number plate from old spoiler. Also remove the bolt at the centre of the vehicle just behind the spoiler that bolts the clamshell to the alloy floor panel.



3. Position new front spoiler in place, best to have 2 persons so as not to damage clamshell. Mark through the spoiler for the additional hole in the rear of the part.



4. Drill the additional holes at the rear of the spoiler into chassis 7.2mm (as marked in step 3) and then inset the 3off M5 rivserts with a nutsert or rivsert tool





Use supplied M5\*30mm bolt with 13mm Spacer and C/Sunk washers here, 1 off

Use supplied M6\*20mm bolts and C/Sunk washers here, 3 off

Use supplied M5\*20mm bolts and C/Sunk washers here, 3 off

6. Position the M5 white nylon 13mm spacer over the centre hole on the spoiler and tape in position. Remove the M6 bolts from the underside chassis that are required for fixing the mid region of the spoiler. Bolt the spoiler up into position with supplied bolts and the front 6 stock mounting bolts removed earlier. Use the C/Sunk washers for the 7 bolts on the bottom surface of the spoiler.

	<p>7. You might need a 1/8" 3.2mm black dome head pop rivet either side at top into wheel arch</p>
	<p>8. Fit the 50mm self-adhesive round black stickers over the underside front 6 holes. Refit and torque wheels if removed and carefully lower to the ground.</p>

**WARNING, MOTORSPORT OR DRIVING CAN BE DANGEROUS RESULTING IN DEATH OR PERSONAL INJURY.**

### **READ OUR FITTING INSTRUCTIONS CAREFULLY**

This article is sold without warranty expressed or implied. No warranty or representation is made as to this product's ability to protect the user from injury or death. The user assumes that risk. The effectiveness, warranty and longevity of this equipment are directly related to the manner in which it is INSTALLED, USED, and/or MAINTAINED. THE USER ASSUMES THE RISK.

FITMENT OF REVERIE PRODUCTS TO AUTOMOBILES THAT ARE SUBJECT TO A MANUFACTURER'S WARRANTY MAY VOID THE MANUFACTURER'S WARRANTY AND THE VEHICLES ABILITY TO MEET EMISSION OR OTHER TRANSPORT REGULATIONS.

By purchasing this product and opening the packaging, purchasers expressly acknowledge, understand and agree that they take, select and purchase these REVERIE products from REVERIE, its affiliates, distributors, and agents (collectively, REVERIE) "as is" and "with all faults".

The entire risk as to the quality and performance of these REVERIE parts is with the purchasers. Should the goods prove defective following their purchase; the purchasers assume the entire cost for all necessary servicing or repair or any resulting liability. Working on your car can be a dangerous activity. If you are unsure of what you are doing, please leave mechanical or Safety critical work to a skilled mechanic.

We take no responsibility for the incorrect use and / or installation of REVERIE products.

[WWW.REVERIE.LTD.UK](http://WWW.REVERIE.LTD.UK)