

## EXIGE S2 2010 MOTORSPORT 225MM CARBON FIBBRE ADJUSTABLE REAR WING AND CARBON CLAM MOUNT KIT

### R01SB0383



#### INTRODUCTION

The ReVerie Lotus Exige S2 2010 adjustable rear wing has been specifically designed for fitment to the Lotus Exige S2 (2010 Build), the wings profile is the work of a professional aerodynamicist active in the leading edge of motorsport whose target was to develop a rear wing offering improved down force, minimal drag whilst aesthetically complementing the form of the Exige S2.

The wing is hollow in section with carbon fibre stringer supports that run the length of the wing, and is constructed from fully autoclaved pre-preg Carbon Fibre. The Carbon wing support posts have been developed to allow adjustment to the wings angle of attack for increased rear end down force and aero balance adjustment. The boot supports in this kit are used to take the load from the end plates. Please fit lotus OEM gaskets between clamshell & wing supports on to the chassis longerons under the boot floor.

#### **WARNING, MOTORSPORT OR DRIVING CAN BE DANGEROUS RESULTING IN DEATH OR PERSONAL INJURY. READ OUR FITTING INSTRUCTIONS CAREFULLY**

This article is sold without warranty expressed or implied. No warranty or representation is made as to this product's ability to protect the user from injury or death. The user assumes that risk. The effectiveness, warranty and longevity of this equipment are directly related to the manner in which it is INSTALLED, USED, and/or MAINTAINED. THE USER ASSUMES THE RISK.



ReVerie Ltd  
Unit 2, Chandlers Row  
Port Lane  
Colchester  
Essex, CO1 2HG

Tel: 01206 866663  
02081 235997  
Fax: 01206 868144  
E-mail: sales@reverie.ltd.uk  
Skype: Reverie\_Composites



Fitment of REVERIE PRODUCTS TO AUTOMOBILES THAT ARE SUBJECT TO A MANUFACTURER'S WARRANTY MAY VOID THE MANUFACTURER'S WARRANTY AND THE VEHICLES ABILITY TO MEET EMISSION OR OTHER TRANSPORT REGULATIONS.

By purchasing this product and opening the packaging, purchasers expressly acknowledge, understand and agree that they take, select and purchase these REVERIE products from REVERIE, its affiliates, distributors, and agents (collectively, REVERIE) "as is" and "with all faults".

The entire risk as to the quality and performance of these REVERIE parts is with the purchasers. Should the goods prove defective following their purchase; the purchasers assume the entire cost for all necessary servicing or repair or any resulting liability. Working on your car can be a dangerous activity. If you are unsure of what you are doing, please leave mechanical or Safety critical work to a skilled mechanic.

We take no responsibility for the incorrect use and / or installation of REVERIE products.

[WWW.REVERIE.LTD.UK](http://WWW.REVERIE.LTD.UK)

## UV-PROTECTION

Please Note Epoxy Pre-preg products are not UV stable. Texallium products are particularly liable and can yellow in only 2 – 6 weeks. The epoxy resin will 'yellow' with prolonged exposure to UV radiation and material strength properties will slowly deteriorate. We recommend exterior products or those exposed to constant UV are either colour painted or at least Lacquered. We use predominately 2K car lacquers of medium solids, the DBS range has been found very suitable, although people have had equally good results with Urethanes varnishes and epoxy clear coats.

The surface should be sanded with 180, 240 then 320 grit and a cleaning solvent used to remove grease or dirt prior to paint application. Several coats may be required (normally 3 to 4 light coats) to avoid pin-holing, common with painting composite products. Pin holes may be dubbed in carefully with a brush, then wet flatted for a final application of 3 thin coats. **Let air dry only**, you may stove the paint at 70°C once fully air dried.

## LOTUS DISCLAIMER

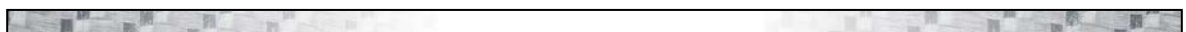
Although ReVerie Limited supply parts for use with/on vehicles manufactured by Lotus Cars Limited, ReVerie Limited is in no way connected to Lotus Cars Limited or any other member of the Lotus Group of companies ("Lotus") and is entirely independent of Lotus. Accordingly, none of the products offered for sale or supplied by ReVerie Limited (nor any advice or service offered or provided by ReVerie Limited) are in any way endorsed by Lotus and Lotus has not tested or approved any such products or services. Accordingly, Lotus shall not under any circumstances be liable for any loss, claim, damages or any consequential, indirect or special damages whatsoever arising out of or in connection with the use of products sold or supplied by ReVerie."

## ELISE S2 ADJUSTABLE REAR WING KIT CONTENTS

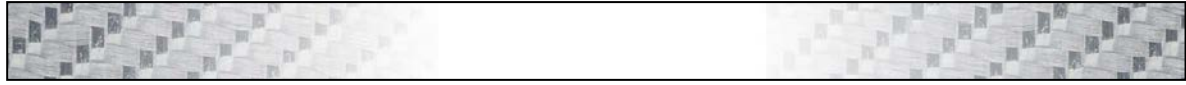
- 1 X CARBON REAR WING
- 2 x EXIGE 2010 ENDPLATES
- 2 x BOOT SUPPORTS

### Fixings:

product engineering composite manufacture premium products



Registered Office: Unit 2, Chandlers Row, Port Lane, Colchester, Essex, CO1 2HG



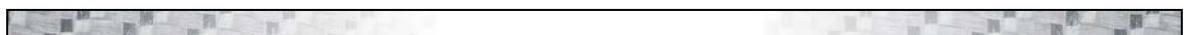
4 x M6 C/SUNK 20MM BOLTS  
4 x ALLOY C/SUNK TOP HAT WASHERS  
8 x 20MM DIAMETER M6 WASHERS  
4 x M6 x 20MM BOLTS  
4 x M6 x 25MM BOLTS

## FITTING INSTRUCTIONS

A

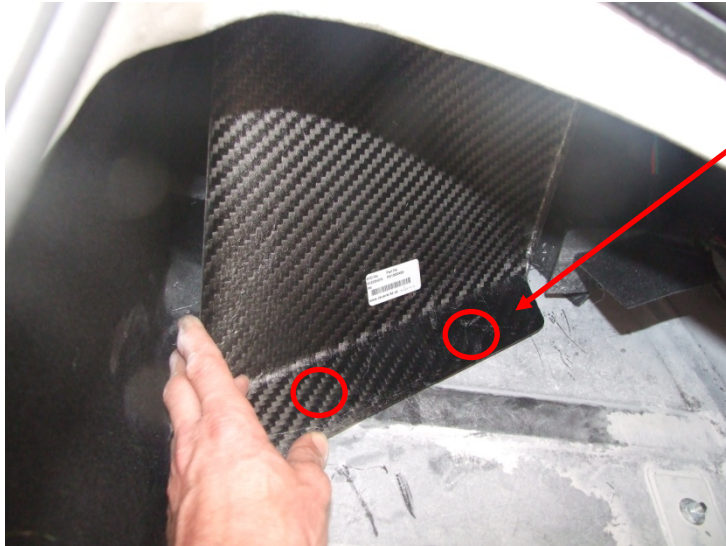


REMOVE YOUR OLD EXISTING WING AND DRILL TWO HOLES IN TOP OF CLAM INTERNAL SUPPORTS WHILE FITTED IN SITUE UNDER CLAM TO ALLIGN WITH EXISTING HOLES IN YOUR CLAM.





**B**

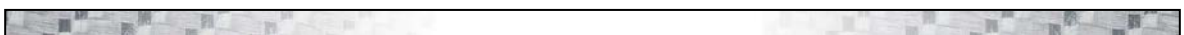


DRILL AND ATTACH CLAM SUPPORTS TO THE CLAM IN BOTH SIDES USING EXISTING FITTING HOLES FOUND IN THE CLAM USING SHORT SCREWS FOUND IN KIT. YOU MAY NEED TO MOVE THE BATTERY.

**C**

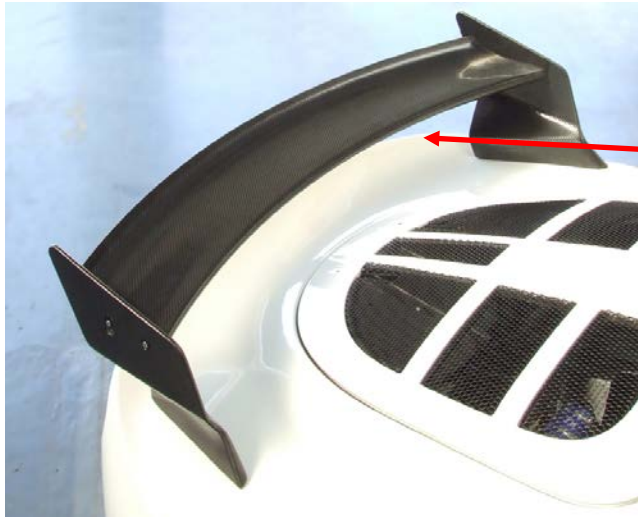


FIX ENDPLATES TO WING USING BOLTS AND WASHERS FOUND IN SEPARATE BAG IN THE KIT. POSITION ON TOP OF CLAM FIT NEW GASKETS AND BOLT IN POSITION USING SUPPLIED BOLTS AND WASHERS





D



WE RECOMMEND SETTING THE WING TO BETWEEN 8 AND 12 DEGREES AoA AS A STARTING POINT, PLEASE DRIVE ON TRACK SENSIBLY AND TUNE AoA UNTIL A NICE BALANCE POINT IS FOUND.

