

Elise S2 111R Side Duct Fitting Guide

R01SE0296, R01SE0294

Introduction

In order to facilitate ram air to an induction system reverie have produced an inner passenger side moulded scoop with 100mm exit snorkel, this can be directly fed into our Daytona 111r or S2 k series induction kits.

To further improve this we also offer outer scoops with mesh grilles that enhance the styling, offer increased air filter clogging protection and direct an increased amount of air to the inner scoop or engine bay / oil cooler if fitted.

These outer scoops are particularly useful on Modified cars, in particular those with turbo chargers which benefit from the increased general cooling or oil cooler targeted flow provided.

These outer grilles are available for s2 Elise with brackets that attach to the standard plastic side grille fixing points (once removed), or S2 Exige with the standard 3 holes for the bolt up fixing, supplied with 3 spacer posts and m5*45mm bolts.

LOTUS DISCLAIMER

Although ReVerie Limited supply parts for use with/on vehicles manufactured by Lotus Cars Limited, ReVerie Limited is in no way connected to Lotus Cars Limited or any other member of the Lotus Group of companies ("Lotus") and is entirely independent of Lotus. Accordingly, none of the products offered for sale or supplied by ReVerie Limited (nor any advice or service offered or provided by ReVerie Limited) are in any way endorsed by Lotus and Lotus has not tested or approved any such products or services. Accordingly, Lotus shall not under any circumstances be liable for any loss, claim, damages or any consequential, indirect or special damages whatsoever arising out of or in connection with the use of products sold or supplied by ReVerie.

Parts Supplied:

Irs0856 U channel Rubber edging for grille edge 350mm long * 2 off

2 OFF Self tapping 4.2mm screws hex head 10mm long

Tools Required

Metric spanner set





Metric socket set

Drill and 3mm drill bit

Posi bladed Screwdriver

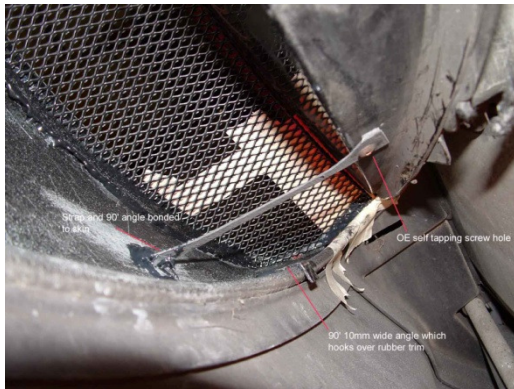
Jack, Axle stands, wheel wrench

Outer Scoops S2 Elise

	<p>1. Clock the front wheels, jack the rear of the car up, and remove the rear road wheels. Remove the rear inner wheel arch liners and standard plastic grilles. There is a fixing point at the rear inside (10mm spanner req), and also a posi self-tapping screw again also inside.</p>
	<p>2. Grille removed showing rubber edge trim to be retained. You can also see an oil cooler, which has been fitted to this particular car (UK drivers side).</p>
	<p>3. New reverse outer duct shown ready to be fitted. Note rear tag to go to existing bolt, lower strap to go to std posi drive fixing hole, front tag which drops over rubber edge trim and top tag which requires one 3mm hole to be drilled in body work and a posi screw fixing.</p> <p>At this point you need to decide if you want to refit the original grilles behind, or on the passenger side maybe one of our inner ducts to ram feed our Daytona induction system, available for 111r and s2 k series cars.</p>
	<p>4. If fitting the outer ducts with no inner duct then the grille finishes in the door shut at the red line shown in the image, leaving a hole above. This is best remedied by either fitting our inner scoop, or refitting the whole of the o.e plastic grille behind the outer scoop. Either way always affix the upper forward outer scoop tag first (see 6/7), then slide the replacement inner scoop or o.e part in from behind.</p>



5. O.e plastic grille shown fitted behind our new outer scoop. If an oil cooler is fitted or for other reasons you do not wish to keep the o.e plastic grille then simply cut the forward upper section off along the red line shown. This small piece can then be bonded in situ with a small amount of PU adhesive around the tag. Again always do this once the outer scoops forward upper fixing is secured (see 6/7).



6. Push the new reverie duct through the rubber from the outside, having lipped the front lower tag over the rubber.

Screw in the rear fixing bolt with hose bracket or suitable washers so the bolt does not crack the clamshell.



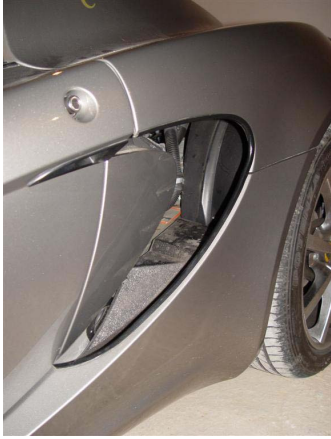
7. Mark through the upper front tag-fixing hole, to the body so you know where to drill the hole. This hole will be in a non-seen position even if the car is returned to standard. Remove the duct and drill the hole, then refit and now screw the posi drive screw back into lotus o.e hole and screw a new one in the upper forward hole. If the screws do not tighten then bond and rivet in place.



8. Optional outer carbon side ducts shown. N.B with holes for Exige S2, without holes for Elise S2. See www.reverie.ltd.uk for details. Refit the inner wheel arch liners and refit the road wheels. Lower car to the ground and torque wheel nuts.

Inner Scoop with 100mm exit R01SE0294 (Can be used for Ram air to Daytona induction kit)

Can be fitted alone, although it is advised to fit it with the outer ducts so you gain increased ram air and importantly a mesh grille to reduce debris that will need constantly cleaning from the Daytona induction filter if fitted.



1. Chock front wheels, Jack up rear of car and remove road wheels. Remove the rear inner wheel arch liners and standard plastic side duct, see instructions for removal in outer ducts section 1.

Note: Ideally this scoop should be used with the deeper outer scoops we offer particularly in hotter climates. Also an additional slot should be added below the 100mm 45° exit to allow more general cooling air to also enter the engine bay in hot climates such as California USA.



2. Optional inner cold air feed scoop shown (UK passenger side only). See www.reverie.ltd.uk for details. If fitting the duct alone, then fit in the same way as the standard plastic scoop was attached.

N.B The Notch (cant bee seen when fitted) top right is there to clear the upper forward securing strap on our outer scoops (if fitted). The other arrow points to the self-tapping lotus screw hole.

If fitting the inner duct with the outer, then fit the outer duct with the forward upper fixing only, then slide the inner duct in from behind and fit the screw which should pass through inner duct and outer duct strap bracket into the o.e clamshell screw hole) and the bolt with hose bracket.



3. External View of Air inlet feed duct (optional) Fitted alone.

You are also highly recommended to then fit the optional outer deep carbon side scoops to further improve the induction system and gain reduced servicing of the air filter due to the grille mesh stopping debris, particularly tyre rubber clogging the filter. Fitting as per paragraph above.

Screw in the rear fixing bolt with hose bracket or suitable washers so the bolt does not crack the clamshell.



4. View of the scoop under hood, ready to be connected to 111r or s2 k series Daytona induction kit.

Once fitment complete, Refit the inner wheel arch liners and refit the road wheels. Lower car to the ground and torque wheel nuts.

