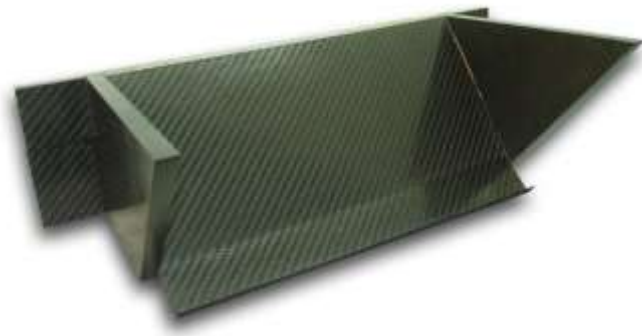


## ELISE/EXIGE S2 GT3 Style Carbon Radiator Mount

### R01SB0389

#### *Introduction*

This Carbon fibre radiator mount allows the radiator to be mounted in a more vertical angle to help reduce the lifting moment created on the front axle by the pressure differential across the radiator core. It is for track use only and is a major piece to fit, requiring a skilled vehicle body or chassis engineer.



#### *Tools Required*

Non listed as professional fitment required.

Note: Likely to need a cheese wire and vibrating knife as often used by windscreen fitment companies to remove old crash structure from chassis.

#### **LOTUS DISCLAIMER**

Although ReVerie Limited supply parts for use with/on vehicles manufactured by Lotus Cars Limited, ReVerie Limited is in no way connected to Lotus Cars Limited or any other member of the Lotus Group of companies ("Lotus") and is entirely independent of Lotus. Accordingly, none of the products offered for sale or supplied by ReVerie Limited (nor any advice or service offered or provided by ReVerie Limited) are in any way endorsed by Lotus and Lotus has not tested or approved any such products or services. Accordingly, Lotus shall not under any circumstances be liable for any loss, claim, damages or any consequential, indirect or special damages whatsoever arising out of or in connection with the use of products sold or supplied by ReVerie.

## ELISE/EXIGE S2 Carbon Fibre Radiator Mount



1. Loosen wheel bolts. Jack up car carefully following lotus owner's manual instructions for correct procedure. Support on axle stands. Remove wheels and plastic inner arch liners and front clam shell. Remove radiator and all pipe work.



2. Remove glass fibre crash structure using cheese wires or vibrating knives to try and cut through adhesive. Or simply cut through fibre glass and then slowly and carefully grind back crash structure till bond and eventually alloy just exposed.



3. Old crash structure shown cut off chassis



4. New crash structure shown in position



5. Alloy ducting fabrication shown in position around ProRad from sector111.com in USA. Reverie do not make or supply the GT3 style inlet and exit shrouds which were originally made by Lotus cars for racing.

Thanks goes to Shinoo Mapleton @ Sector111.com for supply of the images used in these fitting instructions.

**WARNING, MOTORSPORT OR DRIVING CAN BE DANGEROUS RESULTING IN DEATH OR PERSONAL INJURY.**

**READ OUR FITTING INSTRUCTIONS CAREFULLY**

This article is sold without warranty expressed or implied. No warranty or representation is made as to this product's ability to protect the user from injury or death. The user assumes that risk. The effectiveness, warranty and longevity of this equipment are directly related to the manner in which it is INSTALLED, USED, and/or MAINTAINED. THE USER ASSUMES THE RISK.

FITMENT OF REVERIE PRODUCTS TO AUTOMOBILES THAT ARE SUBJECT TO A MANUFACTURER'S WARRANTY MAY VOID THE MANUFACTURER'S WARRANTY AND THE VEHICLES ABILITY TO MEET EMISSION OR OTHER TRANSPORT REGULATIONS.

By purchasing this product and opening the packaging, purchasers expressly acknowledge, understand and agree that they take, select and purchase these REVERIE products from REVERIE, its affiliates, distributors, and agents (collectively, REVERIE) "as is" and "with all faults".

The entire risk as to the quality and performance of these REVERIE parts is with the purchasers. Should the goods prove defective following their purchase; the purchasers assume the entire cost for all necessary servicing or repair or any resulting liability. Working on your car can be a dangerous activity. If you are unsure of what you are doing, please leave mechanical or Safety critical work to a skilled mechanic.

We take no responsibility for the incorrect use and / or installation of REVERIE products.

[WWW.REVERIE.LTD.UK](http://WWW.REVERIE.LTD.UK)