
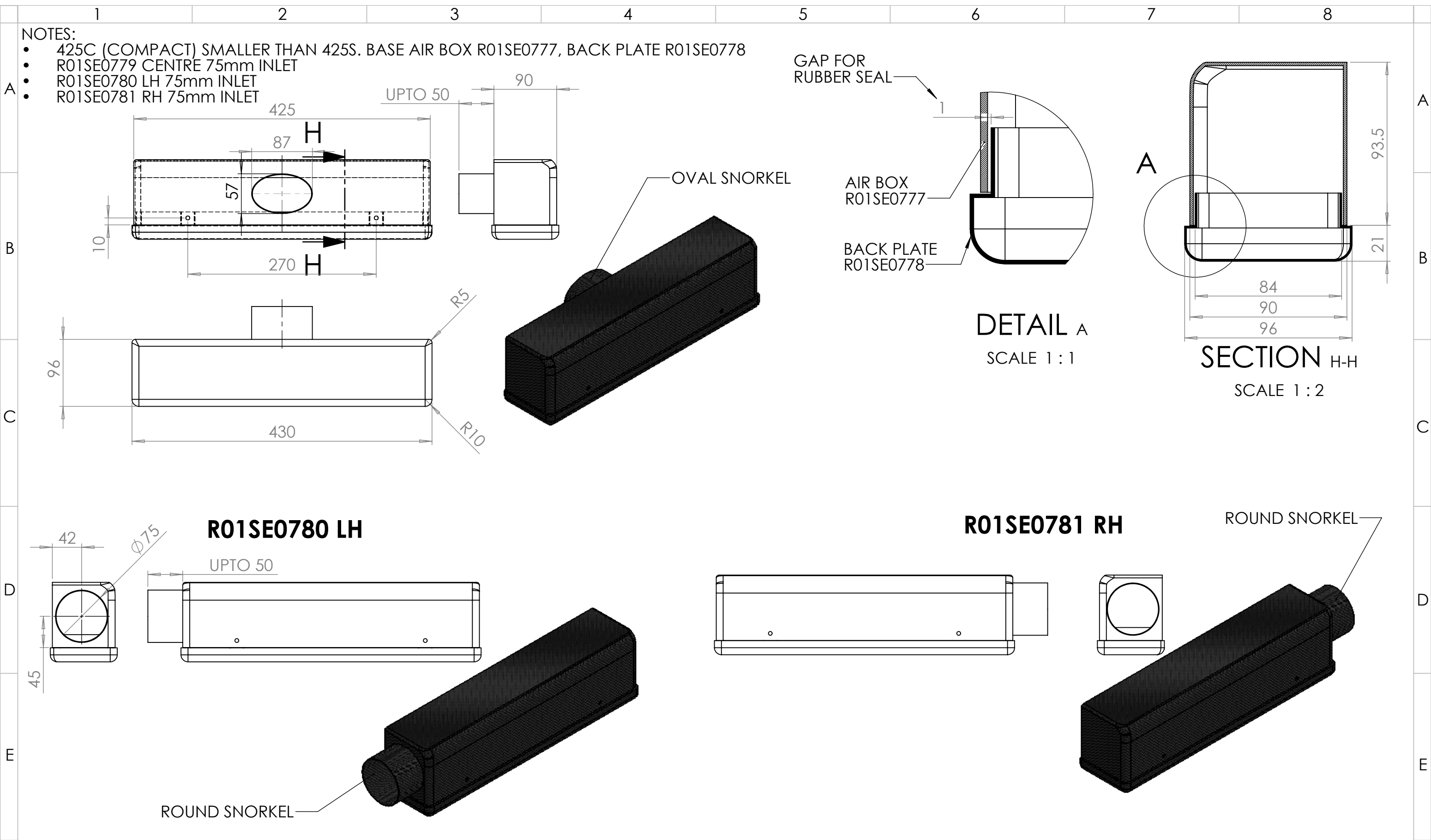
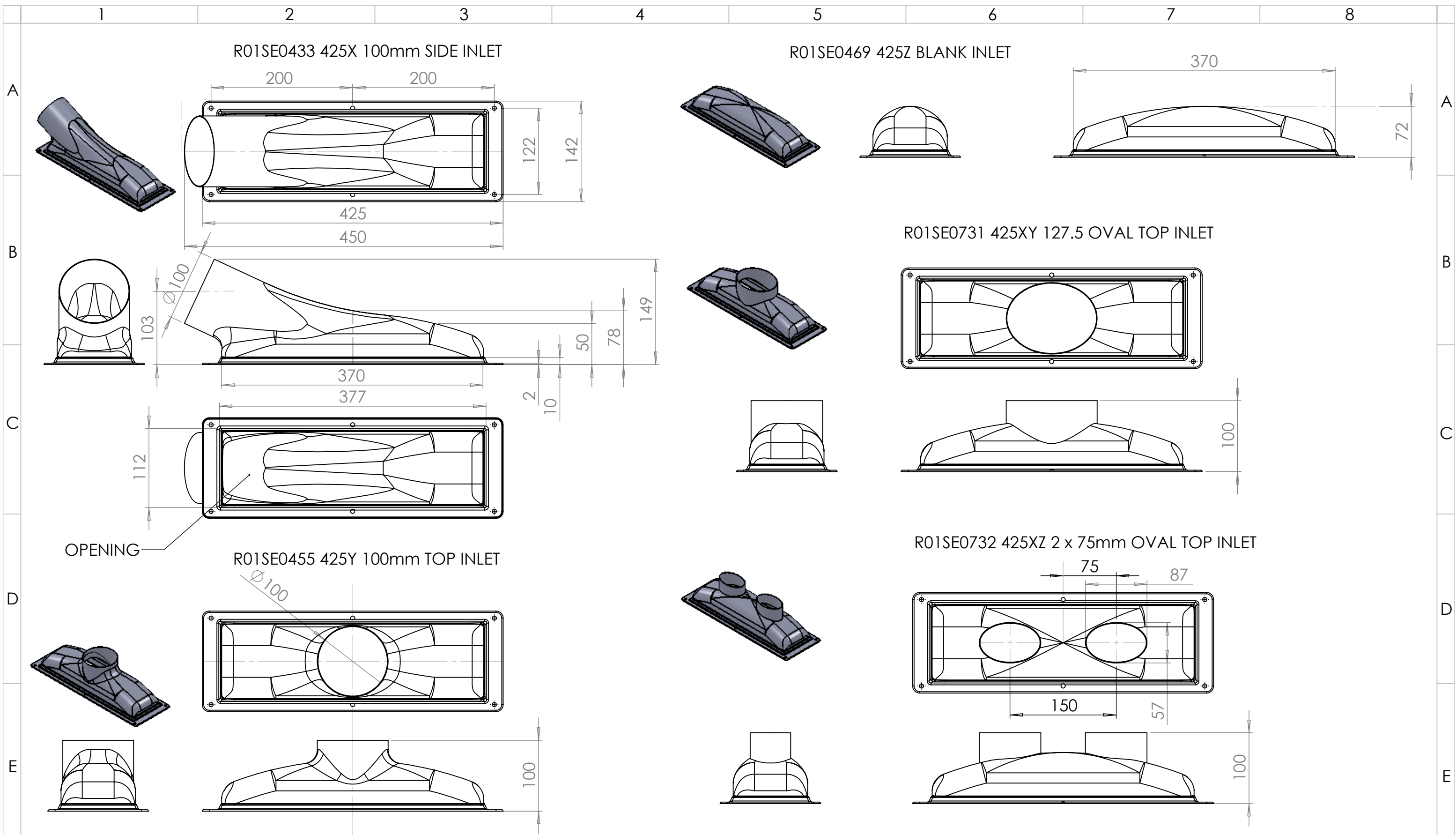


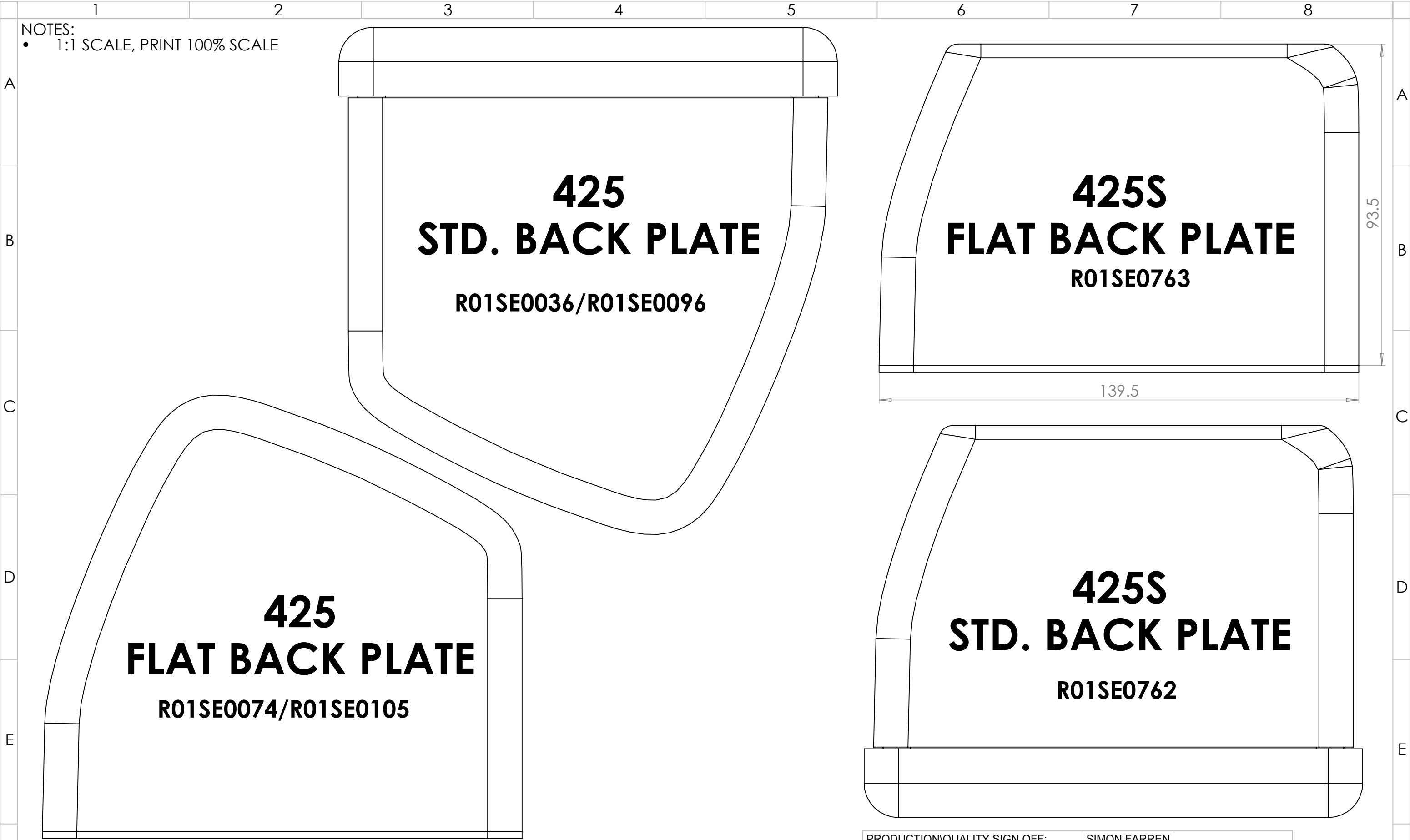
										PRODUCTION\QUALITY SIGN OFF:		SIMON FARREN				A3	SHEET 3 OF 6																																																																																																																																																																																																																																																																																																																																																																																																																																																																																																																																										
										COSTING\SPECIFICATION SIGN OFF:		SIMON FARREN																																																																																																																																																																																																																																																																																																																																																																																																																																																																																																																																															
F	ISS: DESCRIPTION:		INITIALS:	E.C.N. NO:	DATE:	ALL DIMENSIONS IN MILLIMETERS			REMOVE ALL BURRS AND SHARP EDGES UNLESS OTHERWISE STATED		<div></div> <div>Reverie Ltd Unit 2 Chandlers Row Colchester Essex CO1 2HG 01206 866663 www.reverie.ltd.uk</div>		DRAWN: JC	APP:	PART NO(S).: (this sheet) R01SE0762, R01SE0763, R01SE0764, R01SE0765, R01SE0766, R01SE0767, R01SE0768																																																																																																																																																																																																																																																																																																																																																																																																																																																																																																																																												
	1	Original issue	JC		03/09/2020	TOLERANCES (AT 20°C) UNLESS OTHERWISE STATED			HOLES TO BS4500 1985.				DATE: 07/10/2020																																																																																																																																																																																																																																																																																																																																																																																																																																																																																																																																														
																																																																																																																																																																																																																																																																																																																																																																																																																																																																																																																																																											</



										PRODUCTION\QUALITY SIGN OFF:		SIMON FARREN				A3		SHEET 4 OF 6					
										COSTING\SPECIFICATION SIGN OFF:		SIMON FARREN											
ISS:		DESCRIPTION:				INITIALS:		E.C.N. NO:		DATE:		ALL DIMENSIONS IN MILLIMETERS				REMOVE ALL BURRS AND SHARP EDGES UNLESS OTHERWISE STATED		<div><div></div><div>Reverie Ltd Unit 2 Chandlers Row Colchester Essex CO1 2HG 01206 866663 www.reverie.ltd.uk</div></div>					
1		Original issue				JC				03/09/2020		TOLERANCES (AT 20°C) UNLESS OTHERWISE STATED				HOLES TO BS4500 1985.							
												NOMINAL LINEAR DIMENSIONS		SURFACE FINISHES:		THREADS TO BS3643 1981 METRIC COURSE.							
												OVER-INCL		< 0.00		0.00						MILLING N8	
												0-200		+/- 0.50		+/- 0.15						TURNING N7	
														250-1000		+/- 1.00		+/- 0.20		GRINDING N6			
														1000 PLUS		+/- 2.00		+/- 0.30		ANG DIMS +/- 0.5			
																				THIS A DRAWING IS A PRIVATE AND CONFIDENTIAL COMMUNICATION			

DRAWN: JC		APP:		PART NO(S).: (this sheet) R01SE0777, R01SE0778, R01SE0779, R01SE0780, R01SE0781			
DATE: 07/10/2020							
FINISH: SEE DRAWING							
SCALE: DO NOT SCALE							
WEIGHT: -				TITLE: INTERLAGOS 425 DRAWING PACK			
				CUSTOMER: N/A			
				MATERIAL: SEE SHEET			
				INSPECTION GRADE: A-1		PART QUALITY: B	
				DRG. NO.: SEE PART NO.S			

[illegible]



										PRODUCTION\QUALITY SIGN OFF: SIMON FARREN										COSTING\SPECIFICATION SIGN OFF: SIMON FARREN										A3										SHEET 6 OF 6																																																																																																																																																																																																																																																																																																																																																																																																																																																																																																																																																																																																																																																																																																																																																																																																																																																																																																																																																																																																																																																																																																																																																																																																																																																																																																																																																																																																																																																																																																																																																																																																																																																																																																																																																																																																																																																																																																																																																																																																																																																																																																																																																																																																																																																																																																																																																																																																																																																																																																																																																																																																																																																																																																																																																																																																																																																																																																																																																																																																																																																																																																																																																																																																																																																																																																																																																																																																																																																																																																																																																																																																																																																															
ISS: DESCRIPTION:										INITIALS: JC										E.C.N. NO:										DATE: 03/09/2020										ALL DIMENSIONS IN MILLIMETERS										REMOVE ALL BURRS AND SHARP EDGES UNLESS OTHERWISE STATED										<div>REVERIE</div> <div>Reverie Ltd Unit 2 Chandlers Row Colchester Essex CO1 2HG 01206 866663 www.reverie.ltd.uk</div>										DRAWN: JC										APP:										PART NO(S): N/A																																																																																																																																																																																																																																																																																																																																																																																																																																																																																																																																																																																																																																																																																																																																																																																																																																																																																																																																																																																																																																																																																																																																																																																																																																																																																																																																																																																																																																																																																																																																																																																																																																																																																																																																																																																																																																																																																																																																																																																																																																																																																																																																																																																																																																																																																																																																																																																																																																																																																																																																																																																																																																																																																																																																																																																																																																																																																																																																																																																																																																																																																																																																																																																																																																																																																																																																																																																																																																																																																																																																																																																																													
1 Original issue																																								TOLERANCES (AT 20°C) UNLESS OTHERWISE STATED										HOLES TO BS4500 1985.																				DATE: 07/10/2020																																																																																																																																																																																																																																																																																																																																																																																																																																																																																																																																																																																																																																																																																																																																																																																																																																																																																																																																																																																																																																																																																																																																																																																																																																																																																																																																																																																																																																																																																																																																																																																																																																																																																																																																																																																																																																																																																																																																																																																																																																																																																																																																																																																																																																																																																																																																																																																																																																																																																																																																																																																																																																																																																																																																																																																																																																																																																																																																																																																																																																																																																																																																																																																																																																																																																																																																																																																																																																																																																																																																																																																																																																	