

Exige S2 Race Wheel Arch Fitting Guide

Introduction (BOND ON TYPE)

In order to facilitate larger wider wheels & tyres to improve grip on either all four corners, or just the rear for circuit use, we have styled and developed these bolt or bond on wheel arch flares. The flares allow 40mm more clearance on all corners and allow modified arch inner liners to be re-fitted. The front arch fenders also replace the front under clam winglets and vent out high-pressure air from the front wheel wells to improve stability at high speeds.

The flares are available with internal hidden flange bolt on with big head fixings or bond on. The internal set up makes a better finish, but some racers may just prefer to rivet an external flange set on please ask if required. The hidden internal fix type could also be bonded on and faired and painted with the complete clamshell if a smoother look is required.

Notes: **Special wider rear flares with or without rear mesh venting to suit 9.5 or 10" rear wheels can be produced if required (as used by Lotus Sport Cadena GT3 team during late 2006).**

40mm front & rear bolt on billet alloy wheel spacers (as used on reverie development car) are available if you wish to run the standard Exige S2 wheels and just increase track width, however for the more discerning enthusiast, particularly for the tuned Exige or Elise we recommend new wheels and tyres. Please download the pdf drawings from our web-site 7.5*17" Et18 with Toyo 215 40 R 17 or 205 40 R 17 and 9 * 17" Et25 with 245 35 R 18 with bolt on 20mm spacers front & rear work well or longer wishbones with std wheels if these should become available from a respected tuner.

Keep an eye on our website as we will list known wheel & tyre packages and other suspension components as they become available. For the moment the easiest option is billet machined centre & split rim wheels, where several manufactures can offer this service to suit the Elise / Exige S2 in several styles.

It is very important that you do not increase the rolling diameter over the standard set up, and check your chosen wheel and tyre package with the suspension in full bump (springs removed) and ½ lock ½ bump.

Parts Available:

Elise S2/Exige S2 Full Wheel Arch Kit (Front & Rear), GRP-Unpainted (With Hidden Internal Flanges)	R01SB0188
Elise S2/Exige S2 Wheel Arch Kit (Front Only), GRP-Unpainted (With Hidden Internal Flanges)	R01SB0153
Elise S2/Exige S2 Wheel Arch Kit (Rear Only), GRP-Unpainted (With Hidden Internal Flanges)	R01SB0186
Elise S2/Exige S2 40mm Wheel Spacers 4*100mm PCD (1 Axle Set)	R01SB0025
Elise S2/Exige S2 30mm Wheel Spacers 4*100mm PCD (1 Axle set)	R01SB6026

All fixings are supplied with the arch fenders, but the wheel spacers if required must be ordered separately.



Photo courtesy of Barrie Whight. Lotus Sport Cadena Gt3 Team, with Rear Arch Kit (modified)



S2 Exige with Full Wheel Arch Kit & 40Fr/40Rr mm Wheel Spacers.

LOTUS DISCLAIMER

Although ReVerie Limited supply parts for use with/on vehicles manufactured by Lotus Cars Limited, ReVerie Limited is in no way connected to Lotus Cars Limited or any other member of the Lotus Group of companies ("Lotus") and is entirely independent of Lotus. Accordingly, none of the products offered for sale or supplied by ReVerie Limited (nor any advice or service offered or provided by ReVerie Limited) are in any way endorsed by Lotus and Lotus has not tested or approved any such products or services. Accordingly, Lotus shall not under any circumstances be liable for any loss, claim, damages or any consequential, indirect or special damages whatsoever arising out of or in connection with the use of products sold or supplied by ReVerie.

Tools Required

Metric spanner set

Metric socket set

10mm spanner

Drill and drill bits

Air hacksaw or 3" carbide cut off wheel in 90' high speed grinder

Use suitable dust mask, goggles, gloves and ear defenders with this!

Dremel with diamond or tungsten taper point

Sandpaper and block of various grits

Posi bladed Screwdriver

Jack, Axle stands, wheel wrench

Access to quality paint and finishing facilities

You will need a suitable epoxy adhesive with a 1 hour pot life SP spabond 370 is recommended or 400ml of 3m dp490 or equivalents

A short filler chopped fibre paste, Wurth pro-filler is recommended

Also a p38 smooth stopper type filler

Parts supplied

For front arch flares internal flange bond on type.

2 * nylon 8mm 45' tapered one end spacers for rear lower front flare sill fixing point.

2* 40mm m5 button head bolt

2* m5 20mm diameter washer

2* m5 jack nut inserts (for front of sills)

2* m5 20mm button head bolts

2* m5 25mm diameter washers

1m length of DX83 vertical rubber edge flap seal for arch liner modifications

2* m6 * 12mm bighead studs

2* m6 nyloc s/steel nuts

2* m5 *10mm button head bolts

2* m5 std washers

For rear arch flares internal flange bond on type.

2* 4mm * 20mm dome head peel rivet


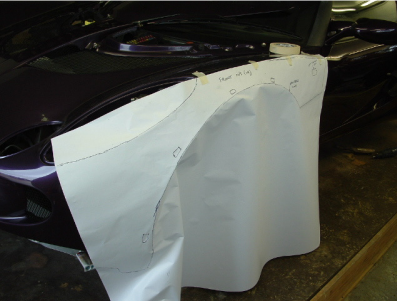


6* 3.2mm * 15mm dome head peel rivet

2* m6 40mm diameter washers

12* m6 nyloc nut s/steel

www.reverie.ltd.uk

10* m6 25mm diameter washer

	<ol style="list-style-type: none"> 1. Loosen wheel bolts, Jack up the car carefully as per lotus handbook instructions and support on four axle stands safely, remove the road wheels and the inner wheel arch liners.
	<ol style="list-style-type: none"> 2. Cut the along the wheel arch line of the paper template. Then position paper templates against relevant wing flare and tape in position. The top edge of the paper runs along the panel top styling line. Then trim the wheel arch away with an air hacksaw or 3" carbide cut off wheel (wear correct PPE).
	<ol style="list-style-type: none"> 3. New rear arch trim line shown cut from paper template. Then through the template using a Dremel with a tungsten or diamond taper point, grind in the fixing bolt slots.
	<ol style="list-style-type: none"> 4. Hold front and rear arches in position on each corner and mark a white line around the outside edge of the arch flares.



5. Grind 15mm inside and outside the white lines for bond area to the arch flares on each corner. Then remove dust and acetone to clean for bonding.

Using your Dremel and diamond point cut the side repeater details on the front clam as shown. Then check the arch flares on the front and rear clams.



6. On the front arches it is very important to move the arch as far rearward as possible so that the vertical face behind the tyre is tight against the sill, otherwise the tyre will fowl on lock at ride height.

Check the door gap and sill to fender flare gap at the rear and sand if required. The Arch fender should lock into the alloy chassis sill section underneath also. Also check the door opens ok, grind the rear extension flatter if require to clear.



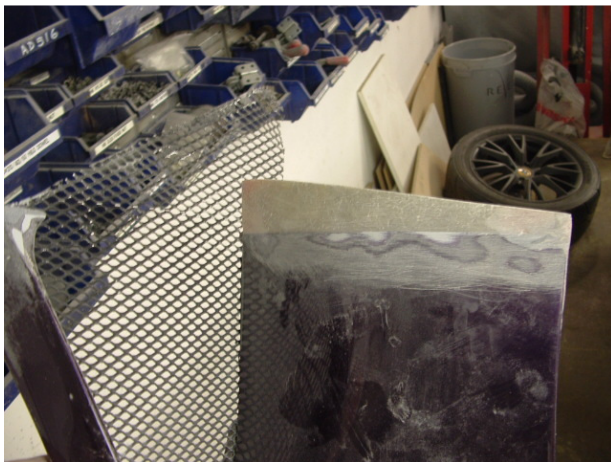
7. Drill one hole in the front sills each side as shown to allow the front arch lower flares to be bolted up tight back against sill to allow front tyre clearance on lock. It is also advised to fit a rivet higher up, 10mm in from the edge to help pull the arch flush with sill end to clear tyre.

IT IS RECOMMENDED YOU FIT OUT SILL RECESS MOULDINGS TO ALLOW CLEARANCE FOR LARGER THAN STOCK ROLLING RADIUS on the 30mm SPACERS OR TO ALLOW 40mm SPACERS



8. Note on the bond on type arch flares the front arches are cut to facilitate clam removal, the lower section is bolt on only and the upper section gets bonded to the clam shell.

At the rear the arch flare is split along the feature line behind the side scoop and a small joggle return flap is moulded on the lower section.






9. The Laminate behind the grille is extended by 8mm against the door gap and tapering up to 25-30mm towards the grille. This section fits up behind the lower clamshell edge. The lower clamshell edge may need thinning on its rear side to allow a flush fit.



10. Once you have checked the fitment of the front and rear fender flares and made any adjustments required for good fit to sill & door. Apply the epoxy adhesive to the rear outer 15mm of the flare and apply to the car and tape in place with a strong cross weave glass tape or rivet in place, whilst the epoxy dries. We also recommend applying a 10mm wide fillet around the outside to blend the features.



11. Location of 45' sill to front fender spacer and m5 * 40mm button head bolt, this gets hidden under arch flare when fitted, adjust spacer height to get sill to fender rear lip at correct height. Bolt the front arch lowers on

	<p>12. Bracket and M5*10mm button head bolt shown bonded inside front arch wheel arch lip. The bracket gets bonded to the lower. The bolt screws into a helicoil in the upper arch flare. Check the gap and alignment its essential to ensure a good locking fit and allow the clam to be removed from the lower arch if required.</p>
	<p>13. Front lower arch fender to door and sill gap shown as it should be, ensure this is correct before painting.</p>
	<p>14. Plastic sill to front fender cover plate shown refitted, note the outside tag has been carefully ground off and the outer edge held down with a small blob of pu sikaflex adhesive.</p>



15. Arch lower shown affixed in position note grille mesh has been unfolded and left vertical, the modified plastic arch liner will but against this mesh.



16. Refit the front inner arch liner. The main rear part needs modifying to allow venting out as shown. The plastic insert parts are cut from what you have removed and bonded and riveted with pu sikaflex. Then fit the vertical lip seal as shown to seal against sill and arch flare vent. Refit the main part with the original lotus fixings. The outer edge should tuck just up above the wheel arch studs & nyloc nuts.



17. Note revised trim line on arch flare to allow more tyre clearance on lock by revealing the original sill end.

Please note if you wish to use 40mm spacers or the wider rims, you must cut a hole into each sill end and fit the sill end recess moulding to allow tyre clearance on lock.





18. Close up showing in situ expanded alloy grille mesh, now bonded in place.



19. The front headlamp inspection covers need widening by approx 40mm as shown. Cut the profile shown and the plastic hump section out. Then cut some 2.5-3mm black flexible pu plastic strip 60mm wide and rivet it as shown. Seal the cut edge with black pu sikaflex as shown. Then refit this panel to the already fitted main section.



20. Grille mesh painted and pu bonded onto front face of inside fender to sill over the vent



21. Rear arch flare shown bonded in position. Once the epoxy sets you can then sand a larger blend area and apply Wurth pro-filler or a similar fibre filled filler. Once the shape is right apply p38 or stopper and sand ready for primer and then paint as required. PAINT PROCESS NOT SHOWN.

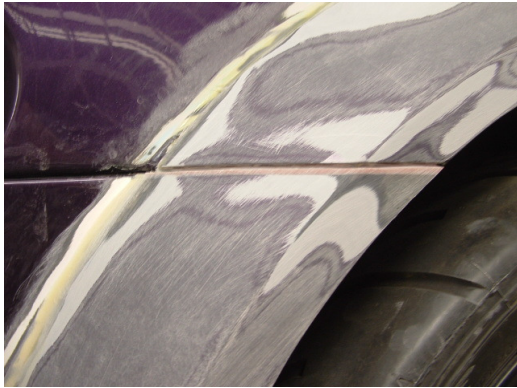


22. Rear arch flare - Drill and fit a 4mm dome headed peel rivet as shown at the front of the rear fenders to sill to help whilst bonding the rear arch flares.



23. Rear arch flare - Drill and fit a 4mm dome headed peel rivet as shown at the front of the rear fenders to sill. Also parcel tape the arch and apply P40 fibre paste to fill the gap between arch and fender as shown on the corner. Then remove when dry and sand to shape. Sand and blend the rear side too. Once completed paint the rivet body colour with a small brush.





24. The joggle return on the lower can be carefully taped over. Then the upper can have tape applied over its cut edge. Then worth fibre filled pro filler can be pushed into the gap to fill flush. This filler can then be blocked flat. Then the slot can be recut carefully only to the depth of the rear vertical joggle with a 3" cut off wheel. This makes a really nest job, giving a split line the right thickness as you can see. Remove all tape carefully from behind joggle etc and check that both arch pieces have not become joined!



25. Std rear inner arch liner shown re fitted using std fixings, no mods.



26. Fit 40mm wide bolt on wheel spacers to the front and 40mm to the rear (or +55mm if using the wider rear arches) or your choice of wider rim and tyre with no larger than stock rolling radius. If fitting spacers bolt them to the same specified torque as the wheel bolts (you may need a colleague to put his foot on the brake to allow this). Race cars may use 40mm on front but require sill end moving back for lock clearance.



27. **Make sure excess stud length after nyloc nut cut off and filed. Carefully remove springs from shocks using spring compressors. Then refit shocks and check wheels in full bump on each corner for tyre clearance. Also check front with 1/2 bump 1/2 lock. Then if happy refit springs to shocks and refit shocks, torque to specified torques. Then re-fit wheels, lower car carefully to ground and remove axle stands. Now torque wheel nuts as per lotus**



28. Carefully drive your car around an off highway space to check for rubbing. Then slowly increase radius and speed. If possible try over rougher terrain to check clearance on bumps & lock. You are then ok to check at increasing speeds on a circuit with visual checks to tyres and arches, until you are happy you have made a correct installation without problems.



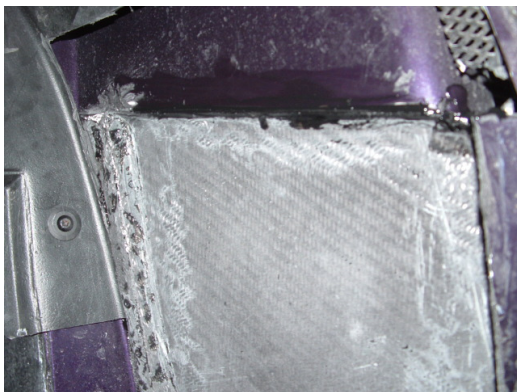
SILL END RECESS MOULDINGS.

AS YOU CAN SEE CLEARANCE ON LOCK IS VERY TIGHT WHEN USING THE STANDARD ROLLING RADIUS TYRES. IT IS RECOMMENDED YOU FIT THE RECESS MOULDINGS TO IMPROVE CLEARANCE; THEY ARE A MUST IF USING 40MM SPACERS OR A TYRE WITH A ROLLING RADIUS SLIGHTLY LARGER. WE RECOMMEND 605MM MAX.

Make sure excess stud length after nyloc nut cut off and filed on rear of arch fixing studs.



Make a paper or card template off the supplied sill mouldings. Then position this template against the sill approx 20mm up from the bottom and 20mm away from the bottom and 20mm away from the chassis. Draw around the template then using a 3" carbide cut off wheel or air hacksaw cut away the sill. BE CAREFUL NOT TO CUT DEEP NEAR THE CHASSIS AS YOU MAY RUPTURE THE PIPES SHOWN IN THE IMAGE.



Bond and rivet the sill recess moulding in place. The top edge of the moulding needs the return flange trimming off and the vertical section grinding to fit. Fill any gaps neatly with adhesive.



Now you should be ready to paint the sill ends along with the rest of the wheel arch flares.

You may like to consider a three element reverie 111r rear diffuser to complement your wide fender conversion and further improve grip through improved aerodynamic down force. Also a tailgate mounted or full width adjustable clam mounted rear wing are available and soon a carbon front spoiler. Also to complement the wider look of this conversion and further aid engine cooling we recommend fitment of our wider than stock bolt on carbon side air intake ducts.

WARNING, MOTORSPORT OR DRIVING CAN BE DANGEROUS RESULTING IN DEATH OR PERSONAL INJURY.

READ OUR FITTING INSTRUCTIONS CAREFULLY

This article is sold without warranty expressed or implied. No warranty or representation is made as to this product's ability to protect the user from injury or death. The user assumes that risk. The effectiveness, warranty and longevity of this equipment are directly related to the manner in which it is INSTALLED, USED, and/or MAINTAINED. THE USER ASSUMES THE RISK.

Fitment of REVERIE PRODUCTS TO AUTOMOBILES THAT ARE SUBJECT TO A MANUFACTURER'S WARRANTY MAY VOID THE MANUFACTURER'S WARRANTY AND THE VEHICLES ABILITY TO MEET EMISSION OR OTHER TRANSPORT REGULATIONS.

By purchasing this product and opening the packaging, purchasers expressly acknowledge, understand and agree that they take , select and purchase these REVERIE products from REVERIE, its affiliates, distributors, and agents (collectively, REVERIE) "as is" and "with all faults".

The entire risk as to the quality and performance of these REVERIE parts is with the purchasers. Should the goods prove defective following their purchase; the purchasers assume the entire cost for all necessary servicing or repair or any resulting liability. Working on your car can be a dangerous activity. If you are unsure of what you are doing, please leave mechanical or Safety critical work to a skilled mechanic.

We take no responsibility for the incorrect use and / or installation of REVERIE products.

WWW.REVERIE.LTD.UK