

REVERIE

LOTUS PARTS BROCHURE

Every car has a lot of speed in it.
The trick is getting the speed out of it.

A.J.Foyt



LIGHTER :: FASTER :: STRONGER

REVERIE



Foreword Simon Farren MD Reverie limited

I founded Reverie back in May 2000 with the intention of designing niche automotive track day and performance enhancing products, after having worked at Lotus for a number of years, latterly on the management team putting the 340R into production. As well as producing a number of universal fitment race car products, my passion for Lotus cars led me to develop a range of aftermarket accessories purely for Lotus to further improve the performance and on track abilities of these fantastic lightweight sports cars.

Between 2003 and 2005 Reverie was proudly involved in winning one of the largest Motorsport Composite projects for Foggy PETRONAS Racing, involving building 150 full panel sets (inc structural seat unit) for the FP1 homologation special. Reverie in this period employed 20 full time staff and 6 Formula One contractors. All delivery times and quality targets were met by the Reverie production staff to both the OEM and FP1 Race Team.



Reverie is an established composites manufacturer with a 'can-do' attitude and uniquely, a range of its own, ever expanding motorsport products and accessories; available worldwide directly from Reverie or through our expanding worldwide dealer network. We also have a thriving sub-contract composites manufacturing business to clients such as AER engines, Citroen WRC, Ginetta cars, Mosler, Sails etc, ZYTEK engines and other such clients.

Reverie's well trained and highly passionate staff have been key to the company's success. We possess an excellent knowledge of composite manufacturing processes and our extensive experience allows Reverie to intuitively make a part right first time. We are highly passionate about developing and improving our product range, levels of service and ensuring Reverie stay at the forefront of affordable high quality autoclaved composites.

I would like to thank Lotus tuners; Hangar 111, Sector 111 and Miki Preparation for supplying images plus all other loyal customer donations. I hope our product offerings allow you to further enhance, improve and enjoy your Lotus car on track.

Contents:

Lotus Elise S1	Pages 3 - 6
Lotus Elise S2	Pages 7 - 10
Lotus Exige S1	Pages 11 - 12
Lotus Exige S2	Pages 13 - 16
Lotus 340R	Pages 17 - 20
Lotus 2-Eleven	Pages 21 - 22
Lotus Evora	Page 23
Seats	Pages 24- 26
Steering wheels	Page 27



The autoclave process

Reverie predominantly use pre-impregnated epoxy thermo set composite materials to ensure high fibre contents can be achieved consistently. We also vacuum bag and autoclave nearly all components to further ensure low void contents and trapped volatiles to maximise interlaminar shear properties by forcing the various layers in the fibre / resin matrix together. This process results in high quality, stiff, lightweight parts achievable time and time again.

Lighter :: faster :: stronger.



REVERIE

ELISE S1

ELISE S1



SPLITTERS & SPOILERS

Full width carbon fibre spoilers and optional carbon splitters for Lotus Elise S1



Painted Reverie carbon fibre spoiler and carbon splitter plate



1 Reverie carbon fibre front spoiler, increases downforce reducing front end lift at high speeds, available painted at extra cost R01SB0057

2 Reverie carbon fibre splitter plate, can be used with or without Reverie carbon front spoiler, provides additional downforce by improving airflow under the car R01SB0102

3 Optional tyre air deflectors for use with or without reverie splitter or spoiler R01SB0152

REAR WINGS

1 Reverie carbon fibre wing assembly, uses four adjustable carbon fibre posts to fix to the clam shell

2 Reverie 255mm chord carbon fibre curved motorsport rear wing, uses alloy mounts to fix to the clam shell

3 Reverie 150mm chord carbon fibre curved motorsport rear wing, uses alloy mounts to fix to the clam shell

DIMENSIONS

	PRODUCT NUMBER	CHORD LENGTH	MAXIMUM WIDTH	ADJUSTABLE POST MOUNTS	REVERIE ALLOY CLAM MOUNTS
1	R01SB0122	150	1450*	•	
2	R01SB0159	225	1650		•
3	R01SB0213	150	1650		•

*Between wing base tips

For all aerodynamic data please visit <http://www.reverie.ltd.uk/techdata.php>



Elise S1 rear wing



Elise S1 motorsport curved rear wing

Sales 0044 1206 866663
www.reverie.ltd.uk



REVERIE

ELISE S1



ELISE S1

MID FLOORS



Standard width mid floor section with two Naca ducts available with or without alloy honeycomb reinforcements

With honeycomb R01SB0323
Without honeycomb R01SB0177



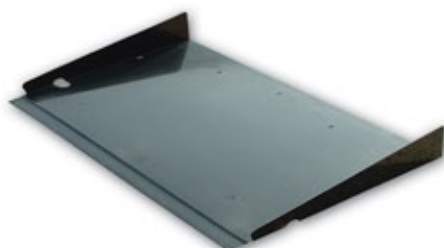
Increased width mid floor section with two Naca ducts available with or without alloy honeycomb reinforcements

With honeycomb R01SB0322
Without honeycomb R01SB0247

Elise S1 front clam floor section
Drop in carbon fibre replacement
Uses OEM fixings (not shown)
R01SB0178

DIFFUSERS

Direct OEM replacement with improved downforce



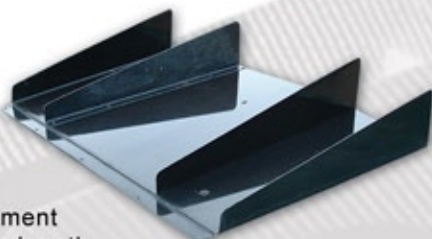
1 Single element, 1.36kg
Standard length



2 Single element, 1.45kg
Medium length



3 Single element, 1.54kg
Long length

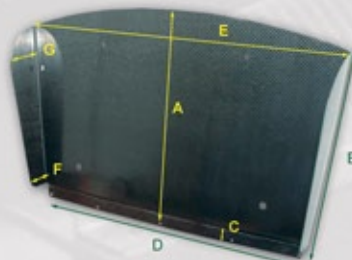


4 Three element
1.76kg, Long length



5 Five element
2.54kg, Long length

DIMENSIONS



PART NUMBER	A	B	C	D	E	F	G
1 R01SB0045	540	540	35	810	890	55	120
2 R01SB0120	580	510	35	775	890	55	120
3 R01SB0055	690	620	35	775	910	55	120
4 R01SB0056	690	620	35	775	910	55	120
5 R01SB0128	690	620	35	775	910	55	120



Single element short diffuser



Medium length diffuser

REVERIE

ELISE S1

ELISE S1



INTERIOR PARTS



- 1** Carbon fibre footwell divider, available in left and right hand drive versions
RHD R01SU0141 LHD R01SU0143
- 2** Carbon fibre centre tunnel, replaces OEM part available in left and right hand drive versions
RHD R01SU0140 LHD R01SU0192

- 3** Elise S1 carbon fibre sill covers
Supplied as a pair R01SB0130
- 4** Elise S1 carbon fibre door cards
supplied as a pair R01SU0142

EXTERIOR PARTS



- 1** Reverie carbon fibre hardtop for Elise S1 R01SB0100 hardtop carry bag available R01SY0019
- 2** Tyre air deflectors for use with or without Reverie carbon fibre front spoiler R01SB0152 R01SB0152
- 3** Reverie carbon fibre side scoops, increases standard scoop frontal area R01SE0378
- 4** Carbon fibre brake duct trumpets, allows for easy routing of brake hose to calipers R01SE0386

Sales 0044 1206 866663
www.reverie.ltd.uk



REVERIE

ELISE S1

ELISE S1

INDUCTION



Daytona induction kit for Lotus Elise S1, available as kit featuring carbon canister and carbon filter adaptor or carbon canister and alloy filter adaptor, includes filter and all ducting and clips

230C carbon case, alloy adaptor R01SE0274
230CX carbon case, carbon adaptor R01SE0205

Daytona induction kit for Lotus Elise S1, alloy equivalent of Daytona 230C kit, features alloy canister and filter adaptor, includes filter and all ducting and clips

230A alloy case, alloy adaptor R01SE0268

Indy remote filter kit for Honda powered Elise S1, includes all ducting and clips

R01SE0412

ENGINE COVERS



Drop in carbon fibre replacement for OEM engine cover, full engine cover to keep water out of spark plug holes for Elise 111S VVC, engine. Fully EMI shielded

R01SE0509

Drop in carbon fibre replacement for OEM engine cover, full engine cover to keep water out of spark plug holes for early K series engines. Fully EMI shielded

R01SE0508

Carbon fibre HT lead cover for early K series engines, drop in replacement for OEM part, uses original fixings. Fully EMI shielded

R01SE0169

Sales 0044 1206 866663
www.reverie.ltd.uk



REVERIE

ELISE S2

ELISE S2



SPLITTERS & SPOILERS



1 Reverie carbon fibre front spoiler, offers increased downforce over OEM part, supplied with or without integrated splitter plates (see image left)
With splitter plates R01SB0125 without splitter plates R01SB0101

2 Reverie splitter plates for use with Reverie non splitter carbon fibre spoiler R01SB0115

3 Reverie Elise S2 Canards supplied as a pair R01SB0212

REAR WINGS

1 Adjustable rear wing assembly uses carbon fibre mounting posts



2 Fixed rear wing assembly fixes directly to clam shell



3 225mm chord motorsport rear wing uses Reverie alloy mounts



4 150mm chord motorsport rear wing uses Reverie alloy wing mounts



Reverie standard height alloy wing mounts supplied as standard



Reverie increased height alloy wing mounts R01SB6039



5 Elise S2 300mm chord straight wing fitted to Lotus 2-Eleven Uses Alloy wing mounts

DIMENSIONS

PRODUCT NUMBER	CHORD LENGTH	WING WIDTH	CURVED	STRAIGHT	FIXED CLAM SHELL	ADJUSTABLE SUPPORT POSTS	ADJUSTABLE CLAM SHELL MOUNTED
1 R01SB0095	150	1450*	•			•	
2 R01SB0119	150	1450*	•		•		
3 R01SB0160	225	1650	•				•
4 R01SB0215	150	1650	•				•
5 R01SB0269	300	1650		•			•

*Between lower clam shell fixing points

Sales 0044 1206 866663
www.reverie.ltd.uk



REVERIE

ELISE S2

ELISE S2



MID FLOORS

PRE 2010 FACELIFT

Standard width mid floor available with or without alloy honeycomb reinforcement. available with two / three naca ducts

K Series two naca ducts R01SB0177
K Series with honeycomb R01SB0323
111R Three naca ducts R01SB0180
111R with honey comb R01SB0325



Increased width mid floor available with or without alloy honeycomb reinforcement. available with two / three naca ducts. Use with **7**

K Series two naca ducts R01SB0247
K Series with honeycomb R01SB0322
111R three naca ducts R01SB0248
111R with honey comb R01SB0324

DIFFUSERS

PRE 2010 FACELIFT

Direct OEM replacement with improved downforce, heat shielded to reflect exhaust heat
Please ask for exhaust hole options



Single element, 1.98kg, for standard K Series
R01SB0040



Three element, 2.34kg, for standard K Series
Standard exhaust R01SB0109



Five element, 2.54kg, for standard K Series
(as shown in header image) R01SB0110



Three element, 2.52kg, for Elise 111S, also available without heatshield, which requires increased exhaust clearance
3 holes R01SB0039 5 Holes R01SB0216 No heatshield 3 holes R01SB0254

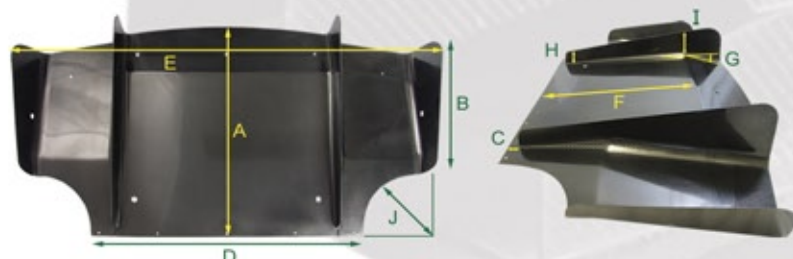


Three element, 2.49kg, for Elise 111R
Std Exhaust 3 holes R01SB0092 5 Holes R01SB0217 7 holes R01SB0318
Stage 2 Exhaust 3 holes R01SB0112 5 Holes R01SB0218 7 holes R01SB0319



Three element for all models, 3.20kg, use with wider midfloor sections, available undrilled or with 3/5 centre tunnel fixing holes
Undrilled R01SB0253 3 holes R01SB0251 5 Holes R01SB0252

DIMENSIONS



111R STAGE 2
5 rear centre tunnel fixing holes and 3 side fixing holes



111R WITH 111S DIFFUSER
centre tunnel and two side fixing holes



ELISE SE
7 rear centre tunnel fixing holes and 3 side fixing holes

	A	B	C	D	E	F	G	H	I	J
1	690	395	30	790	1195	445	16	90	120	180
2	690	395	30	790	1195	445	16	90	120	180
3	690	395	30	790	1195	445	16	90	120	180
4	680	410	30	785	1240	495	16	70	125	185
5	680	410	30	785	1240	495	16	70	125	185
6	680	410	30	785	1230	495	16	50	100	185
7	740	650	35	1180	1180	n/a	n/a	45	120	n/a

REVERIE

ELISE S2

ELISE S2

INTERIOR PARTS



- 1 Reverie carbon fibre replacement door cards and door handle covers R01SU0214
- 2 Carbon fibre centre tunnel for Elise S2 111R powered by Toyota 2ZZ-GE engine LHD R01SU0223 RHD R01SU0220
- 3 Carbon fibre centre tunnel for Elise S2 powered by K Series engine LHD R01SU0224 RHD R01SU0219
- 4 Carbon fibre foot well divider, replaces OEM part, for post 2010 Elise S2 R01SB0350
- 5 Carbon fibre foot well divider available as left or right hand drive for pre 2010 Elise LHD R01SU0143 RHD R01SU0141
- 6 Reverie Carbon fibre rear electrical cover for Elise S2 111R using Toyota 2ZZ-GE engine R01SU0221

INDUCTION

Peak power gain of 13 bhp and average of 7 bhp when using the daytona remote filter system on a stock 111R



Daytona K series ducted remote filter kit includes all ducting and clips

230A Alloy case and adaptor R01SE0273
230C Carbon case / alloy adaptor R01SE0275
230CX Carbon case and adaptor R01SE0206



Elise S2 boost tube assembly, provides a high density cold air feed to the engine, reducing intake temperatures R01SB0036



Daytona 111R ducted / non ducted remote filter kit, non ducted

230A Non ducted alloy R01SE0276
230C Non ducted carbon R01SE0277
230CX Ducted carbon (bracket not required) R01SE0278



Pair of Elise S2 carbon fibre side scoops, direct replacement for OEM part. For use with R01SE0294 R01SE0296



Indy remote filter kit powered Elise S2, includes ducting and clips + Left hand side scoop intake

Remote filter kit R01SE0294
Side scoop intake R01SE0412



Front clam ducts and top wishbone ABS brake bell air canals

Motionsport Disc bell air canal R01SB6065
Motionsport Brake duct R01SB6064

Sales 0044 1206 866663
www.reverie.ltd.uk



REVERIE

ELISE S2

ELISE S2



BODY WORK PARTS



Elise S2 wheel arch kits available as front, rear or full kits, with internal or external flanges for bolting or blending on. Supplied in unpainted GRP gives an additional 40mm more clearance to standard wheels / tyres. Please specify optional +60mm rear arches if required

Full kit with internal flanges*	R01SB0300
Full kit with external flanges*	R01SB0303
Front kit only with internal flanges	R01SB0301
Front kit only with external flanges	R01SB0304
Rear kit only with internal flanges*	R01SB0302
Rear kit only with external flanges*	R01SB0305

30 - 50mm wheel spacers for use with arch kits
30mm R01SB026 40mm R01SB025 50mm R01SB042



- 1** Elise S2 full K Series cam cover, replaces OEM part with fully EMI shielded carbon fibre part, uses OEM fixings

Standard K series R01SE0135 111S version R01SE0295

- 2** Elise horizontal sill extensions, available for use with standard or Reverie wider wheel arches

Std arches R01SB0249
Reverie arches R01SB0250



- 3** Reverie bond in carbon fibre wheel arch louvres, supplied as a front pair or rear pair

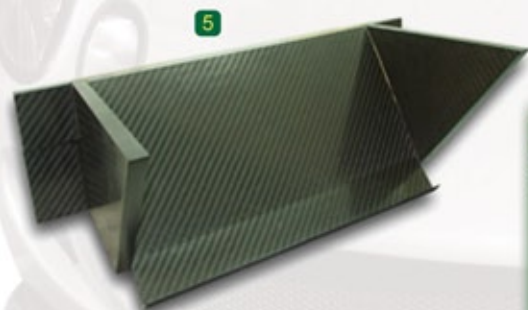
Front R01SB0241
Rear R01SB0242

- 4** Elise S2 111R injector and spark plug cover drop in replacements for OEM parts

Spark plug cover R01SE0284
Injector cover non supercharged R01SE0283
Injector cover supercharged R01SE0441

- 5** GT3 Exige S2 crash structure radiator mount for angled radiator (requires removal of original GRP lotus crash structure from chassis)

R01SB0389



REVERIE

REVERIE

EXIGE S1



EXIGE S1

SPLITTERS



Reverie front splitter plate, can be used as left or right hand part, sold individually
R01SB0199

REAR WINGS

For all aerodynamic data please visit <http://www.reverie.ltd.uk/techdata.php>



1



2



DIMENSIONS

PRODUCT NUMBER	CHORD LENGTH	MAXIMUM WIDTH	REVERIE ALLOY CLAM MOUNTS
1 R01SB0183	255	1650	•
2 R01SB0214	150	1650	•

INTERIOR PARTS



1

2

1 Carbon fibre footwell divider, available in left and right hand drive versions
RHD R01SU0141 LHD R01SU0143

2 Carbon fibre centre tunnel, replaces OEM part available in left and right hand drive versions
RHD R01SU0140 LHD R01SU0192



3

4

3 Elise S1 carbon fibre sill covers
Supplied as a pair R01SB0130

4 Elise S1 carbon fibre door cards
supplied as a pair R01SU0142

INDUCTION



Exige S2 Side scoop pair
Direct OEM replacement
R01SE0378



Remote filter kit for Honda powered Exige S1
R01SE0412

Sales 0044 1206 866663
www.reverie.ltd.uk



REVERIE

EXIGE S1

EXIGE S1

MID FLOORS



Standard width
mid floor section with
two Naca ducts available with or
without alloy honeycomb
reinforcements

With honeycomb R01SB0323
Without honeycomb R01SB0177



Increased width
mid floor section with two
Naca ducts available with or
without alloy honeycomb
reinforcements

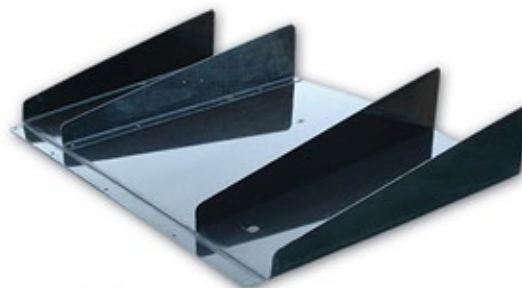
With honeycomb R01SB0322
Without honeycomb R01SB0247

DIFFUSERS

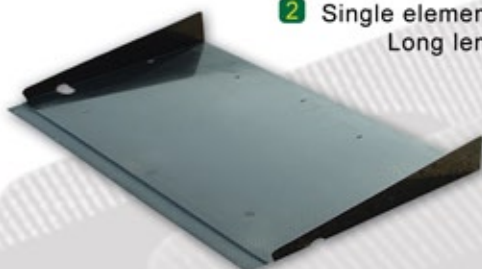
Direct OEM Replacement with improved downforce



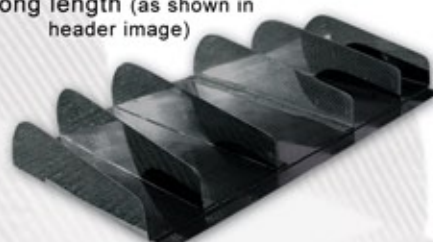
2 Single element, 1.54kg
Long length



3 Three element, 1.81kg
Long length (as shown in
header image)

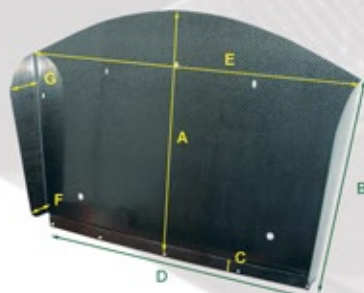


1 Single element, 1.36kg
Standard length



4 Five element, 2.54kg
Long length

DIMENSIONS



PART NUMBER	A	B	C	D	E	F	G
1 R01SB0349	540	540	35	810	890	55	120
2 R01SB0082	690	620	35	780	900	55	120
3 R01SB0083	690	620	35	780	900	55	120
4 R01SB0129	690	620	35	780	890	55	120



Long five element diffuser



Long five element diffuser

Sales 0044 1206 866663
www.reverie.ltd.uk



REVERIE

EXIGE S2

EXIGE S2

SPLITTERS

Available as a standard version or as a wide version for use with Reverie wheel arch kits, many of these parts have been wind tunnel tested at Mira, visit <http://www.reverie.ltd.uk/techdata.php> for more information



Front Splitter / Spoiler with flat underside needs clamshell cutting
For pre 2010 cars
Standard version R01SB0255
Wide arch version R01SB0256



Front Splitter / Spoiler with clamshell hump cut-outs, bolt on fitment
For pre 2010 cars
Standard version R01SB0191
Wide arch version R01SB0198



Exige S2 canards, supplied as a pair
Pre 2010 cars (Pictured on car, left) R01SB0212
2010 onwards cars R01SB0375

SPOILERS



2010 style full race Spoiler
Pre 2010 cars R01SB0315 Post 2010 cars R01SB0374



Bolt on OEM replacement spoiler for pre 2010 cars
R01SB0328

REAR WINGS

For all aerodynamic data please visit <http://www.reverie.ltd.uk/techdata.php>

Clam Mount straight wing

Fixed tailgate mounted straight wing

Clam mount curved wing

Adjustable tailgate mounted curved wing



Standard and optional increased height wing mounts
R01SB6039



Tailgate mount blanking fins R01SB0192



Adjustable tailgate wing mounts unavailable separately

DIMENSIONS

	PRODUCT NUMBER AND FITMENT	CHORD LENGTH	WING WIDTH	TAILGATE MOUNT BLANKING FINS R01SB0192		ADJUSTABLE CLAM MOUNTED	FIXED TAILGATE MOUNTED	ADJUSTABLE TAILGATE MOUNTED
				CURVED	STRAIGHT			
1	R01SB0160 Pre 2010	225	1650	•		•		
2	R01SB0161 Pre 2010	225	1000	•			•	
3	R01SB0215 Pre 2010	150	1650	•		•		
4	R01SB0236 Pre 2010	225	1245	•				•
5	R01SB0269 Pre 2010	300	1650		•	•		
6	R01SB0335 Pre 2010	225	1245		•			•
7	R01SB0380 Post 2010	225	1240	•				

Supplied with end mounts (not shown above)
Adjustable 2010 clam mounts available for std wing R01SB0383

Sales 0044 1206 866663
www.reverie.ltd.uk



REVERIE

EXIGE S2

EXIGE S2



MID FLOORS ALL EXIGE MODELS, NOT 260 CUP

Standard width mid floor available with or without alloy honeycomb reinforcement. available with or without two / three or no naca ducts

Three naca ducts R01SB0180
with honey comb R01SB0325



Increased width mid floor available with or without alloy honeycomb reinforcement. available with or without two / three or no naca ducts. Use with 4

Three naca ducts with honey comb R01SB0248
260 cup, two naca ducts R01SB0324
260 cup no naca ducts R01SB0384
R01SB0385

DIFFUSERS ALL EXIGE MODELS, NOT 260 CUP



- 1 Three element, 2.49kg, for above diffuser exhausts, available with 3, 5 or 7 centre rear fixing holes (as shown in header image)

Pre 2010 - 3 holes R01SB0039 5 holes R01SB0216 7 holes R01SB0317
260 Cup car R01SB0376

- 2+3 Three element, 2.48kg, available for standard or stage two exhaust available with 3, 5 or 7 centre rear fixing holes

Std Exhaust 3 holes R01SB0092 5 Holes R01SB0217 7 holes R01SB0318
Stage 2 Exhaust 3 holes R01SB0112 5 Holes R01SB0218 7 holes R01SB0319



- 4 Three element, 2.48kg, Exige 220S available with 5 or 7 centre rear fixing holes

Pre 2010 - 5 holes R01SB0219 7 holes R01SB0320
260 Cup car - R01SB0372

- 5 Three element for all models, 3.20kg, use with wider midfloor sections, available undrilled or with 3/5 centre tunnel fixing holes

Undrilled R01SB0253 3 holes R01SB0251 5 Holes R01SB0252

REAR FIXING HOLES

EXIGE S



Standard diffuser shown with 7 rear centre tunnel fixing holes and 3 side fixing holes

111R STAGE 2



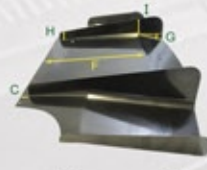
Standard diffuser shown with 5 rear centre tunnel fixing holes and 3 side fixing holes

111R WITH 111S DIFFUSER



Exige with Reverie 111S diffuser and high exit exhaust with 3 centre tunnel and two side fixing holes

DIMENSIONS



PART NUMBER	A	B	C	D	E	F	G	H	I	J
1 R01SB0039	680	410	30	785	1240	495	16	70	125	185
R01SB0376	580	420	30	820	1240	315	16	70	125	185
2 R01SB0092	680	410	30	785	1240	495	16	70	125	185
3 R01SB0112	680	410	30	785	1240	495	16	70	125	185
4 R01SB0219	680	410	30	785	1240	495	16	70	125	185
R01SB0372	580	420	30	820	1240	315	16	70	125	185
5 R01SB0253	740	650	35	1180	1180	n/a	16	45	120	n/a

REVERIE

EXIGE S2

EXIGE S2

INTERIOR PARTS



- 1 Reverie carbon fibre replacement door cards and door handle cover set R01SU0214
- 2 Carbon fibre centre tunnel for Exige S2 111R powered by Toyota 2ZZ-GE engine LHD R01SU0223 RHD R01SU0220
- 3 Carbon fibre foot well divider for post 2010 Exige models R01SB0350
- 4 Carbon fibre foot well divider available as left or right hand drive for pre 2010 Exige LHD R01SU0143 RHD R01SU0141
- 5 Reverie Carbon fibre rear electrical cover for Exige S2 111R using Toyota 2ZZ-GE engine R01SU0221

BODYWORK PARTS



Elise S2 wheel arch kits available as front, rear or full kits, with internal or external flanges for bolting or blending on. Gives an additional 40mm more clearance to standard wheels / tyres

Image left shows painted full GRP wheel arch kit fitted to Lotus Exige S2, please specify optional +60mm rear arches if required

Full kit with internal flanges	R01SB0188
Full kit with external flanges	R01SB0189
Front kit only with internal flanges	R01SB0153
Front kit only with external flanges	R01SB0185
Rear kit only with internal flanges	R01SB0186
Rear kit only with external flanges	R01SB0187
30 - 50mm wheel spacers for use with arch kits	
30mm	R01SB6026
40mm	R01SB6025
50mm	R01SB0042



Exige S2 carbon fibre tailgate improves intercooler efficiency, with louvre exits, includes louvres and internal boot cover

R01SB0329



Exige horizontal sill extensions, available for use with standard or Reverie wider wheel arches

Std arches R01SB0249
Reverie arches R01SB0250



Reverie Carbon Fibre wheel arch louvres, supplies a front pair or rear pair

Front R01SB0241
Rear R01SB0242



Exige S2 bonnet inspection panels, direct replacement for OEM panels, Supplied as a pair

R01SB0353

Sales 0044 1206 866663
www.reverie.ltd.uk



REVERIE

EXIGE S2

EXIGE S2



INDUCTION

Peak power gain of 13Bhp and average of 7Bhp when using the daytona remote filter system on a stock 111R



Daytona non-ducted remote filter kit, available in alloy or carbon fibre fits 111R and Exige S

230A Alloy canister R01SE0276
230C Carbon fibre canister R01SE0277



Daytona ducted carbon fibre remote filter kit, includes, MAF adaptor, canister, filter adaptors and ducting
For ram air use with (R01SE0294)
Fits 111R and Exige S

230CX all carbon kit R01SE0278



Indy remote filter kit for Honda powered Elise S2. Side scoop intake replaces OEM part, can be used with carbon fibre side scoops and 230 CX ducted filter kits. (100mm exit)

1 Indy remote filter kit R01SE0412
2 Side scoop intake R01SE0294

AIR SCOOPS



Exige S2 roof scoop available in carbon fibre or GRP. Extends standard roof scoop to top of wind screen

Carbon Fibre R01SB0193
GRP R01SB0194



Exige S2 side scoops 25mm deeper than OEM part, can be used in conjunction with side scoop intake R01SE0294 and ducted filter kit R01SE0280



Exige / Elise S2 front top wishbone Motionsport disc bell air canal ducts supplied as a pair
Elise intake ducts
R01SB0065

ENGINE COVERS



1 Exige S2 engine bulkhead cover, supplied as a pair containing left hand and right hand covers, clips on to framework R01SB0124

2 Exige 111R carbon fibre spark plug and HT lead cover, direct replacement, uses OEM fixings R01SE0284



3 Exige 111R injector cover drop in replacements for OEM parts not for use with supercharged cars, fully EMI shielded R01SE0283

Exige S Injector cover, for use with supercharged cars R01SE0441

Sales 0044 1206 866663
www.reverie.ltd.uk



REVERIE

340R

340R

SPLITTERS & SPOILERS

Full width carbon fibre or GRP front spoilers and optional carbon splitters for Lotus 340R
Stand Alone Carbon Fibre splitter available for OEM spoiler R01SB0053



340R carbon fibre / GRP deep spoiler, includes splitter plates and gurney end plates with brake ducts
Carbon fibre R01SB0051 GRP R01SB0052
(See images left and page header)



340R carbon fibre / GRP standard depth spoiler, includes splitter plates and gurney end plates with brake ducts
Carbon fibre R01SB0107 GRP R01SB0108
(see right image)



REAR WINGS

Straight wing with 3mm carbon fibre wing mount extensions for standard wing mounts R01SB0258

Curved wing with Reverie carbon fibre supports R01SB0195

Curved Reverie rear wing for use with standard wing mounts R01SB0190



Reverie carbon fibre standard height OEM replacement wing mounts R01SB0023



Reverie carbon fibre raised height 230mm increase OEM replacement wing mounts R01SB0050

Reverie carbon fibre raised height 100mm increase OEM replacement wing mounts R01SB0043

DIMENSIONS

	PRODUCT NUMBER	CHORD LENGTH	MAXIMUM WIDTH	STRAIGHT	CURVED	OEM WING MOUNTS	REVERIE WING MOUNTS	WING MOUNT EXTENSIONS
1	R01SB0258	225	1245	•				•
2	R01SB0195	225	1650		•		•	
3	R01SB0190	255	960		•	•		

For all aerodynamic data please visit <http://www.reverie.ltd.uk/techdata.php>

Sales 0044 1206 866663
www.reverie.ltd.uk



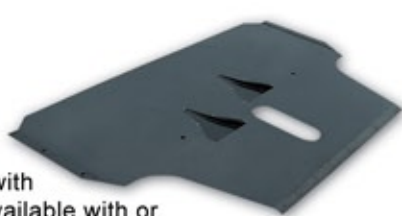
REVERIE

340R

340R



MID FLOORS



Standard width mid floor section with two Naca ducts available with or without alloy honeycomb reinforcements.

With honeycomb R01SB0323
Without honeycomb R01SB0177



Increased width mid floor section with two Naca ducts available with or without alloy honeycomb reinforcements.

With honeycomb R01SB0322
Without honeycomb R01SB0247

DIFFUSERS

Direct OEM replacement with improved downforce



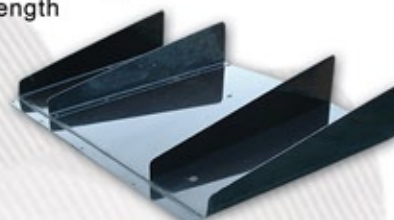
2 Single element, 1.45kg
Medium length



3 Single element, 1.54kg
Long length

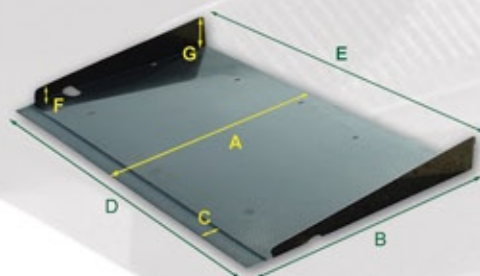


1 Single element, 1.36kg
Standard length



4 Three element, 1.76kg
Long length for use
with wider midfloor
(see header image)

DIMENSIONS



PART NUMBER	A	B	C	D	E	F	G
1 R01SB0339	540	540	35	810	890	55	120
2 R01SB0340	580	510	35	775	890	55	120
3 R01SB0341	690	620	35	775	910	55	120
4 R01SB0253	740	650	35	1180	1180	45	125



Elise S2 111S diffuser fitted



Standard length diffuser fitted

Sales 0044 1206 866663
www.reverie.ltd.uk



REVERIE

340R

340R

BODYWORK PARTS



340R shell guards, light weight protector for top of clam shell sold individually as left hand or right hand part

LH R01SB0103
RH R01SB0104



Carbon fibre effect leather hot air bra for 340R, prevents hot air from engine bay entering cabin, for left or right hand drive cars

LH R01SU0212
RH R01SU0031



Carbon fibre rear number plate holder for 340R, replaces OEM steel plynth

R01SB0118



1 340R BBQ panel, shields induction from exhaust heat and allows for exhaust air cooling R01SB0088

2 340R Mid spoiler infill panel, replaces OEM infill panel with carbon fibre R01SB0089



340R boost tube assembly, replacement engine cover with integrated ram air boost tube, provides high density cold air feed direct to the engine

Carbon fibre version R01SB0008
GRP version R01SB0046



340R footwell cooler snorkel, provides a cold ram air feed to the driver and passenger footwells, improving comfort

R01SB0012



3 340R mid spoiler, replaces OEM part with a light weight carbon fibre part

R01SB0041

Sales 0044 1206 866663
www.reverie.ltd.uk



REVERIE

340R

340R

INTERIOR PARTS



- 1 Carbon fibre dashboard, available in left and right hand drive versions for Lotus 340R LH R01SU0041 RH R01SU0030
- 2 Carbon fibre centre tunnel, available as left or right hand drive versions LHD R01SU0191 RHD R01SU0088
- 3 Carbon fibre foot well divider available as left or right hand drive for Lotus 340R LH R01SU0143 RH R01SU0141
- 4 Reverie Carbon fibre rear electrical cover for Lotus 340R R01SE0285

ENGINE COVERS



Drop in carbon fibre replacement for OEM engine cover, full engine cover to keep water out of spark plug holes for early K series engines

R01SE0508



Carbon fibre HT lead cover for early K series engines, drop in replacement for OEM part

R01SE0169



Sales 0044 1206 866663
www.reverie.ltd.uk



REVERIE

2-ELEVEN

2-ELEVEN

REAR WINGS AND FRONT SPOILER



- 1 300mm chord high downforce straight wing, 1405mm wide fits standard wing mounts (See left image) R01SB0299
- 2 225mm chord high downforce straight wing, 1650mm wide fits standard wing mounts R01SB0246
- 3 2-Eleven carbon fibre front spoiler R01SB053

For all aerodynamic data please visit <http://www.reverie.ltd.uk/techdata.php>

INDUCTION

Peak power gain of 13 bhp and average of 7 bhp when using the daytona remote filter system on a stock 111R

Daytona non-ducted remote filter kit, includes all ducting and clips supplied with MAF adaptor with alloy case

R01SE0276



Daytona non-ducted remote filter kit, includes all ducting and clips supplied with MAF adaptor with carbon case

R01SE0277



ENGINE COVERS AND CENTRE TUNNELS



Spark plug cover for Lotus 2-Eleven powered by Toyota VVTI spark plug cover, direct replacement for OEM part, uses OEM fixing Fully EMI shielded

R01SE0284



Injection cover for Lotus 2-Eleven modified to suit supercharged models direct replacement for OEM part uses OEM fixings

R01SE0441



Carbon fibre centre tunnel for Elise S2 111R powered by Toyota 2ZZ-GE engine LHD R01SU0223 RHD R01SU0220

Sales 0044 1206 866663
www.reverie.ltd.uk



REVERIE

2-ELEVEN

2-ELEVEN



MID FLOORS

Lotus 2-Eleven floor sections with three Naca ducts, available with stiff 4mm alloy honeycomb reinforcement



Standard width floor section

No honeycomb R01SB0180
With honeycomb R01SB0325



Increased width floor section for use with **4**

No honeycomb R01SB0248
With honeycomb R01SB0324

DIFFUSERS

Direct OEM replacement with improved downforce, heat shielded to reflect exhaust heat



1 Single element, 1.98kg, for standard K Series
R01SB0040



3 Five element, 2.54kg, for standard K Series
R01SB0110

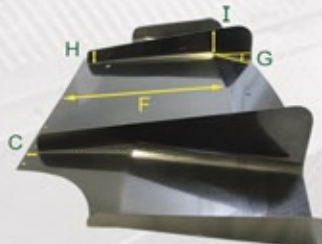
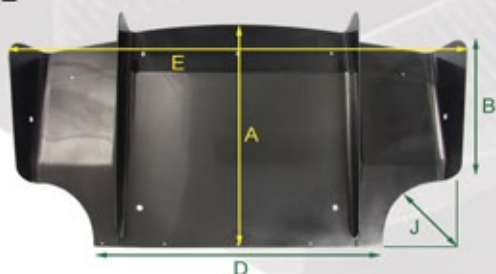


2 Three element, 2.34kg, for standard K Series
R01SB0109



4 Three element for all models, 3.20kg, use with wider midfloor sections, available undrilled or with 3/5 centre tunnel fixing holes
Undrilled R01SB0253 3 holes R01SB0251 5 Holes R01SB0252

DIMENSIONS



PART NUMBER	A	B	C	D	E	F	G	H	I	J
1 R01SB0040	690	395	30	790	1195	445	16	90	120	180
2 R01SB0109	690	395	30	790	1195	445	16	90	120	180
3 R01SB0110	690	395	30	790	1195	445	16	90	120	180
4 R01SB0253	740	650	35	1180	1180	n/a	n/a	45	120	n/a

REVERIE

EVORA

EVORA



- 1 Lotus Evora sport pack and rear diffuser with lower centre exhaust section (3 element)

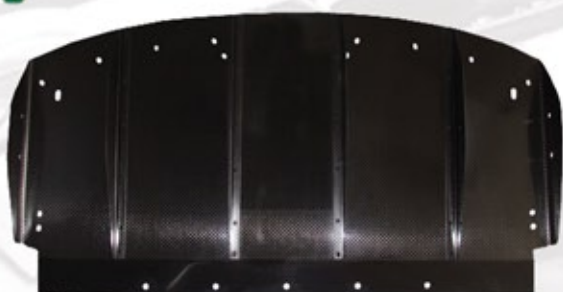
R01SB0360

- 2 Lotus Evora carbon fibre rear diffuser STD (5 element)

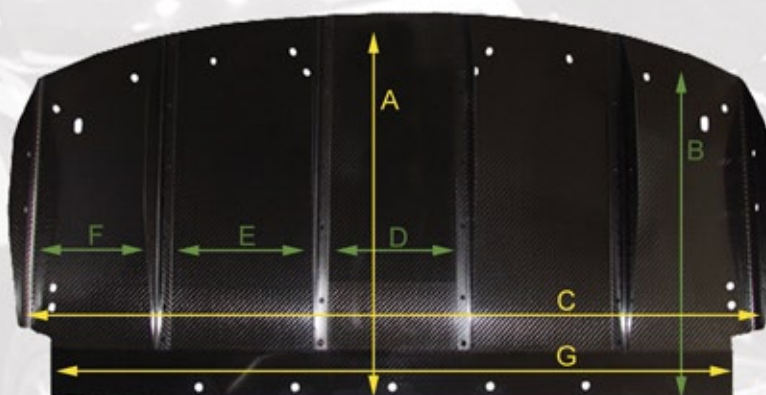
R01SB0359

2010 Lotus Evora S with rear diffuser attached

1



2



DIMENSIONS (MM)

	PART NUMBER	A	B	C	D	E	F	G
1	R01SB0360	560	440	1150	240	240	240	1050
2	R01SB0359	560	440	1150	250	N/A	N/A	1050

Sales 0044 1206 866663
www.reverie.ltd.uk



REVERIE

SEATS

SEATS

SEATS

All narrow seats (Mulsanne B / C low and high back, XR C and X C) fit Lotus S1 / 340R subframes and S2 models with subframe conversion kits, all seats can be fitted with our velcro on cushion trim kits



1 Mulsanne C twin skin Mass: 2.4kg (approx)
2 optional bolt on side head restraint
 Mulsanne C R01SI0001
 Optional bolt on head restraint R01SI0043



Mulsanne B light weight single skin, carbon fibre seat
 Mass: 3.0kg (approx)
 R01SI0017



X C twin skin carbon fibre seat, provides additional support to leg and kidney areas Mass: 3.0kg (approx)
 R01SI0047



XR C narrow Light weight twin skin seat with side impact head rest.
 Mass 3.1kg (approx)
 R01SI0036



SUBFRAMES



Sliding subframe kit for 340R available for left or right hand drive cars, allows for use of a harness, includes all fixings
 RHD drivers side R01SI0022
 LHD drivers side R01SI0024



Fixed subframe kit for 340R available for left or right hand drive cars, allows for use of a harness, includes all fixings
 RHD passengers side R01SI0023
 LHD passengers side R01SI0025



Subframe conversion kit, converts Elise S1/S2 or Elise 111R / 2-Eleven / VX220 to 340R style subframe
 Elise S1/S2 drivers side RHD R01SI0040
 Elise S1/S2 drivers side LHD R01SI0054
 111R / 2-eleven drivers side RHD R01SI0039
 111R / 2-eleven drivers side LHD R01SI0053



Elise / 2-Eleven / VX220 passengers side fixed subframe + Mulsanne B spocker kit
 RHD passengers side R01SI0063
 LHD passengers side R01SI0064
6 Mulsanne spocker kit R01SI0087

Sales 0044 1206 866663
www.reverie.ltd.uk



REVERIE

SEATS

SEATS

SEAT SIZES



Seat Type

	A	B	C	D	E	F	G	H	I	J	K	L	X
1 Mulsanne C	460	440	330	380	405	880	540	288	630	870	150	650	60
3 Mulsanne B	475	450	330	380	405	910	605	288	660	900	100	630	60
4 X C without side head rest	480	420	320	460	440	910	680	288	640	850	140	690	60
5 XR C	480	420	320	460	440	910	680	288	640	850	140	690	60



Sales 0044 1206 866663
www.reverie.ltd.uk



25

REVERIE

SEATS

SEATS

CUSHION KITS

Reverie velcro on cushion pad kits, comprising of base, back, head and shoulder pads per seat
Standard colours listed below, other colours may be available on request
Narrow kits will fit all Lotus seat models



BRUSHED NYLON FABRIC CUSHION KITS



Black
R01SI6043



Red
R01SI6043R



Dark Blue
R01SI6043DB



Blue
R01SI6043B



Dark Grey
R01SI6043DG



FIA SPACER FABRIC CUSHION KITS



Black
R01SI6135



Red
R01SI6135R



Blue
R01SI6135BE



Grey
R01SI6135G



DINAMICA CUSHION KITS



Black
R01SI6045



Red
R01SI6045R



Royal Blue
R01SI6045RB



Grey
R01SI6045G



LEATHER CUSHION KITS



Black
R01SI6007B



Red
R01SI6007R



Blue
R01SI6007BE



Grey
R01SI6007GY

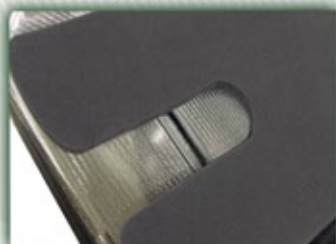


Green
R01SI6007GN



Yellow
R01SI6007Y

BLACK FOAM CUSHION KITS



Black foam cushion kit
R01SI0007

VINYL CUSHION KITS



Vinyl cushion kit
R01SI6009

CARBON LEATHER



Carbon effect leather cushion kit
R01SI6024

REVERIE

STEERING WHEELS

STEERING
WHEELS

STEERING WHEELS

Autoclaved carbon fibre steering wheels of superb quality which meet F1 technical regulations tested by TRL
For dimensions of our steering wheels please visit www.reverie.ltd.uk/steering_data.php



- 1** Rally 330, suede trimmed carbon fibre steering wheel, 330mm O/D, Mass 350g (approx) R01SH0037
As used by Citroen WRC since 2003
- 2** Flight 315, untrimmed carbon fibre steering wheel, 315mm O/D, Mass 300g (approx) R01SH0002
- 3** Flight 280, untrimmed carbon fibre steering wheel, 280mm O/D, Mass 300g (approx) R01SH0008
- 4** Rally 330, half suede trimmed, flat bottom steering wheel, 320mm O/D, Mass 350g (approx) R01SH0140
- 5** Eclipse 315, untrimmed carbon fibre steering wheel, 315mm O/D, Mass 300g (approx) R01SH0001
- 6** Eclipse 280, untrimmed carbon fibre steering wheel, 280mm O/D, Mass 260g (approx) R01SH0118

STEERING WHEEL ACCESSORIES



Light Momo/Sparco collapsible boss for Elise based vehicles, versions for cars with or without airbags

For cars with airbag R01SH0028
For cars without airbag R01SH0018



Cast Momo / Sparco boss for Lotus Elise style fitment cars
86mm O/D

R01SH0000



Carbon fibre centre horn push ring, fits Momo, OMP and sparco drilling patterns

R01SH0057



Reverie centre horn push kit, fits to holes drilled in wheels

R01SH0003

GEAR KNOBS

Non-lift reverse gear knobs will fit Elise S1, Exige S1, 340R and K series Elise S2
Lift reverse will fit 111R Elise S2, Exige S2 and 2-Eleven



Carbon fibre lift reverse gear knob with alloy or brass insert
Tungsten filled or unfilled

M8 - 1.5 Pre Feb 05 hex shaft
Alloy - filled R01SU0122 Unfilled R01SU0084
Brass - filled R01SU0124 Unfilled R01SU0104
M10 - 1.5 Pre 2009 round shaft
Alloy - filled R01SU0136 Unfilled R01SU0138
Brass - filled R01SU0144 Unfilled R01SU0146
M12 - 1.5 Post 2009
Alloy - filled R01SU0199 Unfilled R01SU0200
Brass - filled R01SU0196 Unfilled R01SU0197



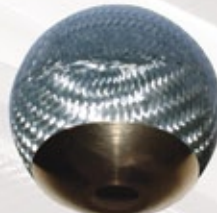
Texalium lift reverse gear knob with alloy or brass insert
Tungsten filled or unfilled

M8 - 1.5 Pre Feb 05 hex shaft
Alloy - filled R01SU0123 Unfilled R01SU0085
Brass - filled R01SU0125 Unfilled R01SU0105
M10 - 1.5 Pre 2009 round shaft
Alloy - filled R01SU0137 Unfilled R01SU0139
Brass - filled R01SU0145 Unfilled R01SU0147
M12 - 1.5 Post 2009
Brass - filled R01SU0195 Unfilled R01SU0198



Carbon fibre non-lift reverse gear knob, with brass insert. Tungsten filled or unfilled

M10 - 1.5 S1 / 340R Fitment
Tungsten filled R01SU0128
Unfilled R01SU0126



Texalium non-lift reverse gear knob, with brass insert. Tungsten filled or unfilled

M10 - 1.5 S1 / 340R Fitment
Tungsten filled R01SU0129
Unfilled R01SU0127

Sales 0044 1206 866663
www.reverie.ltd.uk



REVERIE

Terms and conditions of sale

The following terms and conditions ("the Conditions") are the terms on which ReVerie Limited sells products and supersedes all other terms and conditions relating to the subject matter of these Conditions

1. OFFERS & ACCEPTANCE

1.1. No obligation shall arise as a result of a catalogue entry, quotation or any other offer, until ReVerie limited supplies written acceptance of the order via post, e-mail or fax from a customer seeking to buy goods or services. Verbal orders are no longer deemed acceptable, orders must be placed using our orders form via post, fax or e-mail, or retail using our on-line store

2. PRICE AND PAYMENT

2.1. The price (exclusive of VAT Tax) for the Goods "the Price" shall be the quoted price of the Seller and payment of the Price shall be made by the Buyer before despatch or in exceptional circumstances where an account is agreed within 30 days of the date of the invoice for the Goods

2.2. If the Price is not paid by the due date interest shall accrue both before and after judgement on the unpaid portion of the Price at the rate of 8 per cent above the base / bank rate per annum as per the six month periods listed in the table below:

(The late payment of commercial debts (interest) act of 1998)

The Bank of England base rate on 31st December will be the reference rate for:
The Bank of England base rate on 30th June will be the reference rate for:

The six month period
1st January to 30th June
1st July to 31st December

2.3. If the purchaser fails to make any payment on the due date then without prejudice to any of ReVerie's other rights, ReVerie may:
a) Suspend or cancel delivery of any goods to the purchaser and / or
b) Appropriate any payment made by the purchaser to such of the goods (or Goods supplied under any other contract with the purchaser) as the company may in its sole discretion think fit.

2.4. Secured payments made on our website by credit or debit card are 'deferred' and checked by us before processing at the soonest opportunity. If we decide not to process the transaction we will advise, your order is not confirmed until you have received written acknowledgement back. We reserve the right to charge a deposit or payment in full for orders upfront depending on the circumstances.

3. GOODS

The description and quantity of the goods to be sold ("the Goods") shall be as set out in the quotation provided by the Seller to the Buyer ("the Quotation")

4. DELIVERY

The Seller shall deliver the Goods to the Buyer at the address of the Buyer as shown on the Quotation on the date shown on the Quotation. Time shall not be of the essence for delivery Where Goods are delivered by an independent carrier instructed by the purchaser, delivery to the carrier shall be deemed to be delivery to the purchaser.

5. ACCEPTANCE

The Buyer shall be deemed to have accepted the Goods if they have not been rejected on or before the 7th day after delivery. The Buyer shall not be entitled to reject the Goods in whole or in part after such date.

6. GUARANTEE

We guarantee your satisfaction. All of our products come with a 30 day no quibble guarantee.

7. RETURNS

If you are wishing to return a product please call us first. If the product has been wrongly ordered or no longer required it will be subject to a 15% Handling fee if we agree at our discretion to accept the return of the item for a refund or exchange. If the item does not fit, is not fit for purpose or has been damaged and signed for as damaged in transit then on return of damaged goods we will send a new replacement or may offer a full refund if the replacement item will be some weeks. Special order items may not be cancelled or returned unless agreed by ReVerie Limited.

8. INTELLECTUAL PROPERTY AND INFORMATION

ReVerie Limited will take all reasonable steps in the course of business to ensure that the products do not infringe any patent, design, trademark, copyright or any other rights of third parties.

ReVerie Limited own full copyright on all items supplied unless rights to the design are specifically sold on to the buyer. Intellectual property is retained by ReVerie Limited.

ReVerie Limited will take action to protect its copyright & Intellectual property.

9. TITLE AND RISK

9.1. The Goods shall be at the risk of the Buyer following delivery.

9.2. In spite of delivery having been made, ownership in the Goods shall not pass from ReVerie limited until:

- a) The Buyer has paid the price plus VAT in full; and
- b) No other sums whatever shall be due from Buyer to ReVerie Limited.

9.3. Until such time as title in the Goods passes to the Buyer the Seller shall have the right to repossess or otherwise recover the Goods

9.4. Notwithstanding that the Goods or any of them remain the property of the Company the purchaser may sell or use the Goods in the ordinary course of the purchaser's business at full market value for the account of ReVerie. Until property in the Goods passes from ReVerie limited the entire proceeds of sale or otherwise of the Goods shall be held in trust for ReVerie limited.

9.5. Until such time as property in the Goods passes from ReVerie limited, the Buyer shall upon request deliver up such of the Goods as have not ceased to be in existence or resold to ReVerie limited. If the Buyer fails to do so, ReVerie limited may enter upon any premises owned, occupied or controlled by the buyer where the Goods are situated and repossess the Goods.

10. LIMITATION OF LIABILITY

10.1. Save in respect of personal injury or death due to the negligence of the Seller the Seller shall not be liable to the Buyer in respect of any loss suffered by the Buyer due to any defect in the Goods

10.2. Without prejudice to Condition 6.1 the Seller shall not be liable to the Buyer or any third party for any loss of profit, consequential or other economic loss suffered by the Buyer arising in any way from this Agreement

10.3. Save in respect of personal injury or death due to the negligence of the Seller the liability of the Seller under these Conditions shall not exceed the Price

11. FORCE MAJEURE

The Seller shall not be liable for any default due to any circumstance beyond the reasonable control of the Seller including, but not limited to, Acts of God, war, civil unrest, riot, strike, lock-out, acts of civil or military authorities, fire flood, earthquake or shortage of supply or failure to deliver of the suppliers of the Supplier

12. GENERAL

12.1. If any term or provision of these Conditions is held invalid illegal or unenforceable for any reason by any Court of competent jurisdiction such provision shall be severed and the remainder of the provisions hereof shall continue in full force and effect as if these Conditions had been agreed with the invalid illegal or unenforceable provision eliminated

12.2. The Seller may without the consent of the Buyer sublicense its rights or obligations or any part of these Conditions.

12.3. The headings in these Conditions are for ease of reference only and shall not affect the interpretation of any of the Conditions

13. ENTIRE AGREEMENT

Each of the parties agrees that save in respect of statements made fraudulently it shall have no remedy in respect of any untrue statement upon which it relied in entering this Agreement and that its only remedies shall be for breach of contract

14. GOVERNING LAW AND JURISDICTION

This agreement shall be governed by the laws of England and Wales and the parties hereby submit to the non-exclusive jurisdiction of the Courts of England and Wales

15. RIGHTS OF CONSUMER

Nothing in these Conditions shall affect the statutory rights of a consumer.



World Wide Dealers Wanted

Visit ReVerie online for worldwide dealers

Download latest prices, technical data, drawings and digital versions of our brochures for free
Advanced search function available to show all parts compatible with your Lotus car

www.reverie.ltd.uk

Authorised Dealer Stamp

ReVerie Limited
Unit 2 Chandlers Row
Colchester
Essex
CO1 2HG
UK

WARNING! MOTORSPORT OR DRIVING CAN BE DANGEROUS RESULTING IN DEATH OR PERSONAL INJURY. READ OUR FITTING INSTRUCTIONS CAREFULLY ReVerie automotive products are for "motorsports use only". We cannot be held responsible for misuse of our products. This article is sold without warranty expressed or implied. No warranty or representation is made as to this product's ability to protect the user from injury or death. The user assumes that risk. The effectiveness, warranty and longevity of this equipment are directly related to the manner in which it is INSTALLED, USED, and/or MAINTAINED. THE USER ASSUMES THE RISK. Fitment of reverie products to automobiles that are subject to a manufacturer's warranty MAY VOID THE MANUFACTURER'S WARRANTY AND THE VEHICLES ABILITY TO MEET EMISSION OR OTHER TRANSPORT REGULATIONS. By purchasing this product and/or opening the packaging, users / purchasers expressly acknowledge, understand and agree that they take, select and purchase these REVERIE products from REVERIE, its affiliates, distributors, and agents (collectively, REVERIE) "as is" and "with all faults". The entire risk as to the quality and performance of these REVERIE parts is with the purchasers. Should the goods prove defective following their purchase, the purchasers assume the entire cost for all necessary servicing or repair or any resulting liability. Working on your car can be a dangerous activity. If you are unsure of what you are doing, please leave mechanical or Safety critical work to a skilled mechanic. We take no responsibility for the incorrect use and / or installation of REVERIE products. If this Carbon fibre product is exposed to sunlight / UV then it should be regularly UV coated with Armour-all protectant or sanded and 2k clear lacquered. Prolonged exposure to UV will 'yellow' the epoxy and lead to slow deterioration of structural performance (more info available on our web site or on request).

Although ReVerie Limited supply parts for use with/on vehicles manufactured by Lotus Cars Limited, ReVerie Limited is in no way connected to Lotus Cars Limited or any other member of the Lotus Group of companies ("Lotus") and is entirely independent of Lotus. Accordingly, none of the products offered for sale or supplied by ReVerie Limited (nor any advice or service offered or provided by ReVerie Limited) are in any way endorsed by Lotus and Lotus has not tested or approved any such products or services. Accordingly, Lotus shall not under any circumstances be liable for any loss, claim, damages or any consequential, indirect or special damages whatsoever arising out of or in connection with the use of products sold or supplied by ReVerie.